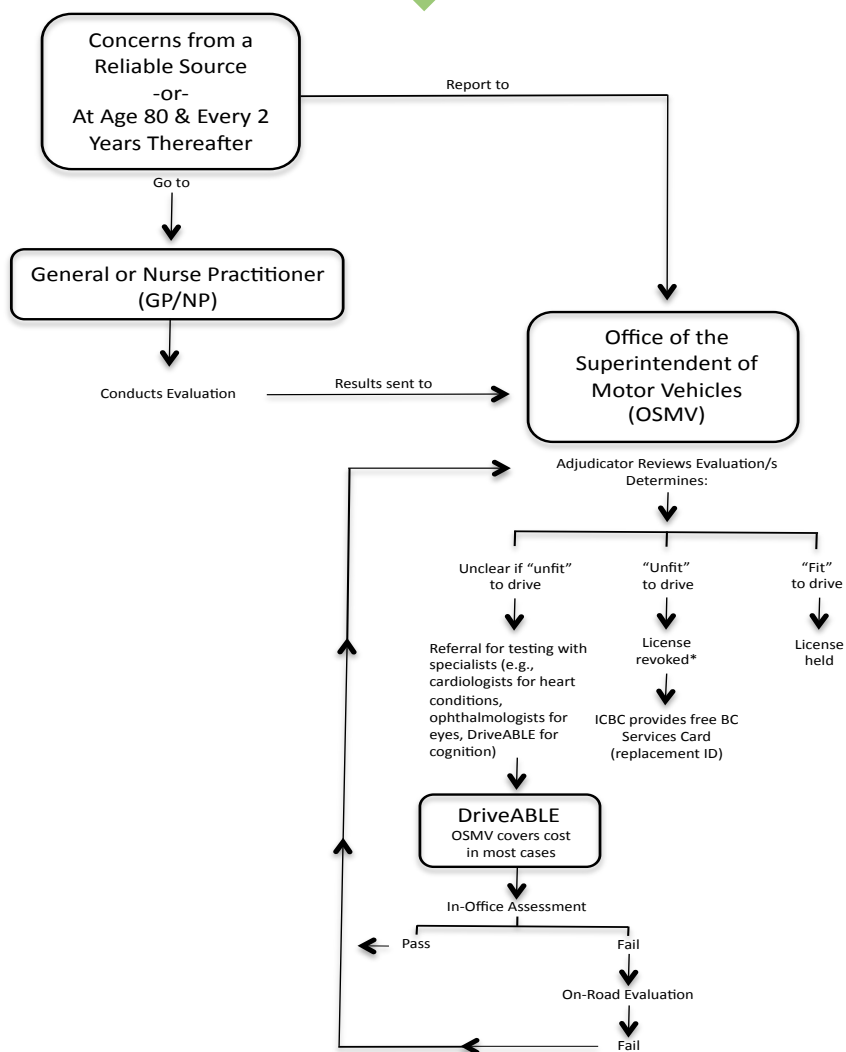


# The Assessment Process



The BC Motor Vehicle Act states that the Superintendent of Motor Vehicles has the ultimate authority to revoke or refuse to reissue a driver's license.

In Victoria, BC the assessment process is outlined below:



\* It is illegal to drive after a license is revoked. Continued driving without a valid license can result in fines and up to 6 months in jail (for second offenders). Additionally, if in an accident, ICBC no longer provides coverage, which can result in the loss of assets if sued.

## Contact Information

### Office of the Superintendent of Motor Vehicles:

- Phone: [250-387-7747](tel:250-387-7747)
- Website: [www.pssg.gov.bc.ca/osmv](http://www.pssg.gov.bc.ca/osmv)

### Insurance Corporation of British Columbia (ICBC)

- Phone: [1-800-663-3051](tel:1-800-663-3051)
- Website: [www.icbc.com](http://www.icbc.com)

### DriveABLE:

- Phone: [1-888-475-4666](tel:1-888-475-4666)
- Website: [www.driveable.com](http://www.driveable.com)