

# Re:Locating the orchards of Victoria, BC 20 yards food diet!



## Introduction

- **Why?**
- **Where?**
- **What? / How?**
- **Lessons learned**
- **Future**

## Why?

**“To know a place is also to know the past.**

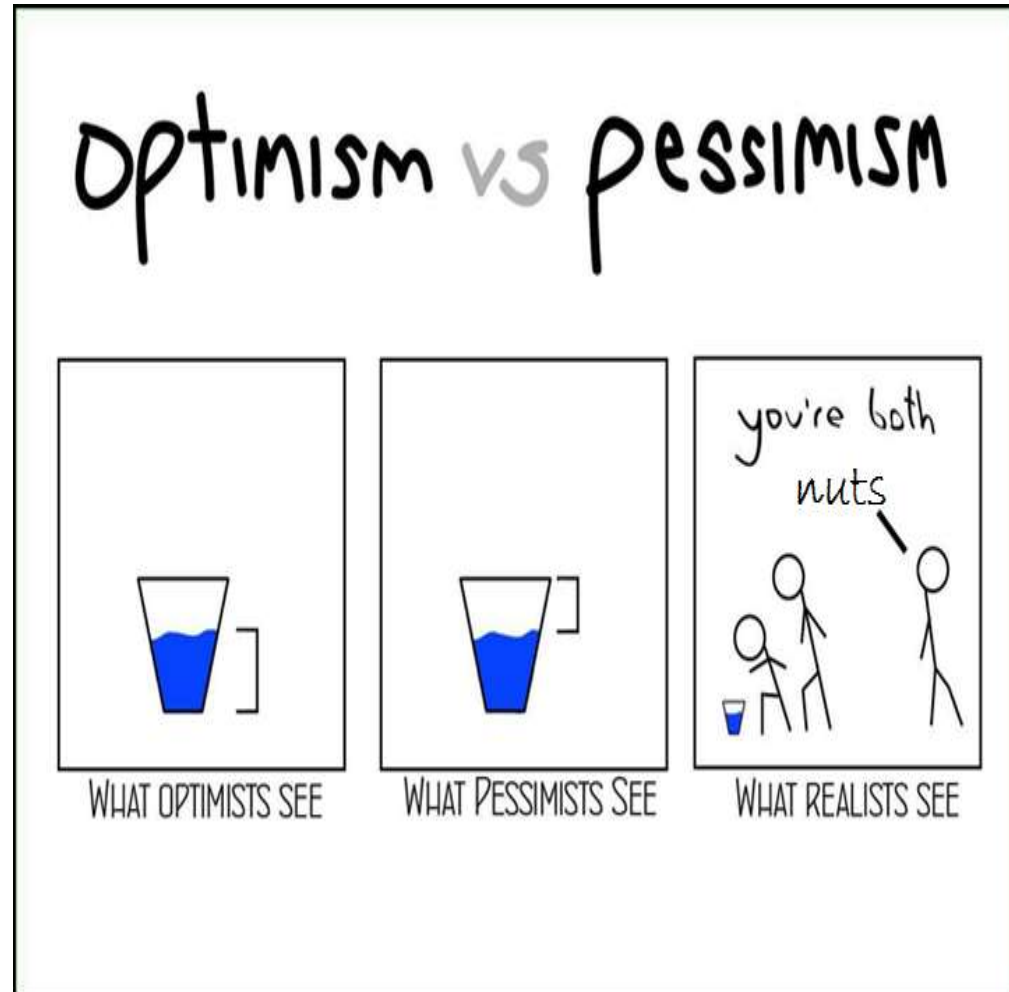
**Place...is the past and the present...**

**Place is created by human beings for human purposes. Every row of trees...”**

Yi-Fu Tan, 1975. Place: An Experiential Perspective. *Geographical Review* 65(2)

## Why?

- 20 yards local food security diet
- community engagement
- local, do not have to import
- food bank
- tree pruners
- ArcGIS output .pdf raster layers problems
- loss of trees and forests
- historic urban geography
- provide sense of past
- local food security
- planting new fruit trees
- Fruit Tree Project





# Why?



**Plant-a-Fruit-Tree-Day**  
(a celebration of National Tree Day)

Free to attend! {  
Mini How-to Workshops  
Fruit & Nut Tree Sales  
Planting of Fernwood Orchard  
Live Music + Food Trucks

at the  
Fernwood  
Community  
Centre

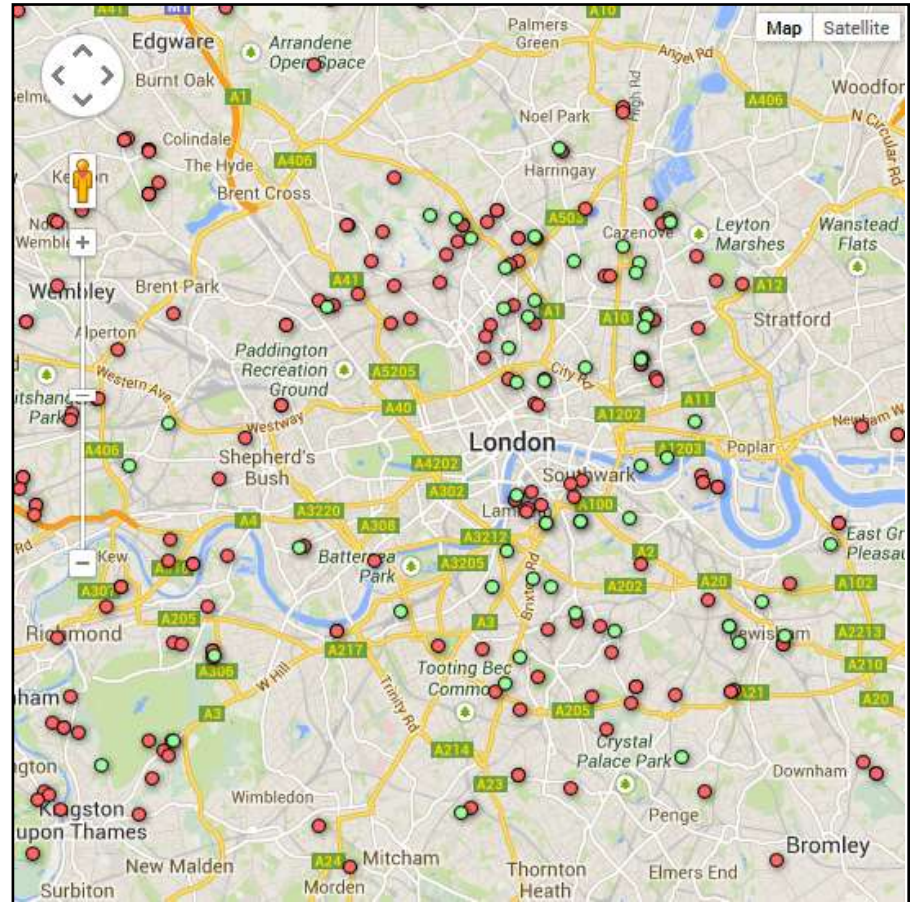
Followed with a talk by Seann Dony of  
Sole Food Farms - Vancouver | Tickets \$20

**September 28, 2013**  
10am-4pm

Fernwood NRG  
Near Neighbourhood Resource Group

London Foodshed Education Centre

The poster features a decorative border of various fruits and vegetables, a silver watering can at the bottom left, and a silver fork at the top center. The text is arranged in a clear, readable layout with a mix of bold and regular fonts.



## Why?

**“...You always said people don’t do what they believe in,  
they just do what’s most convenient,  
then they repent...”**

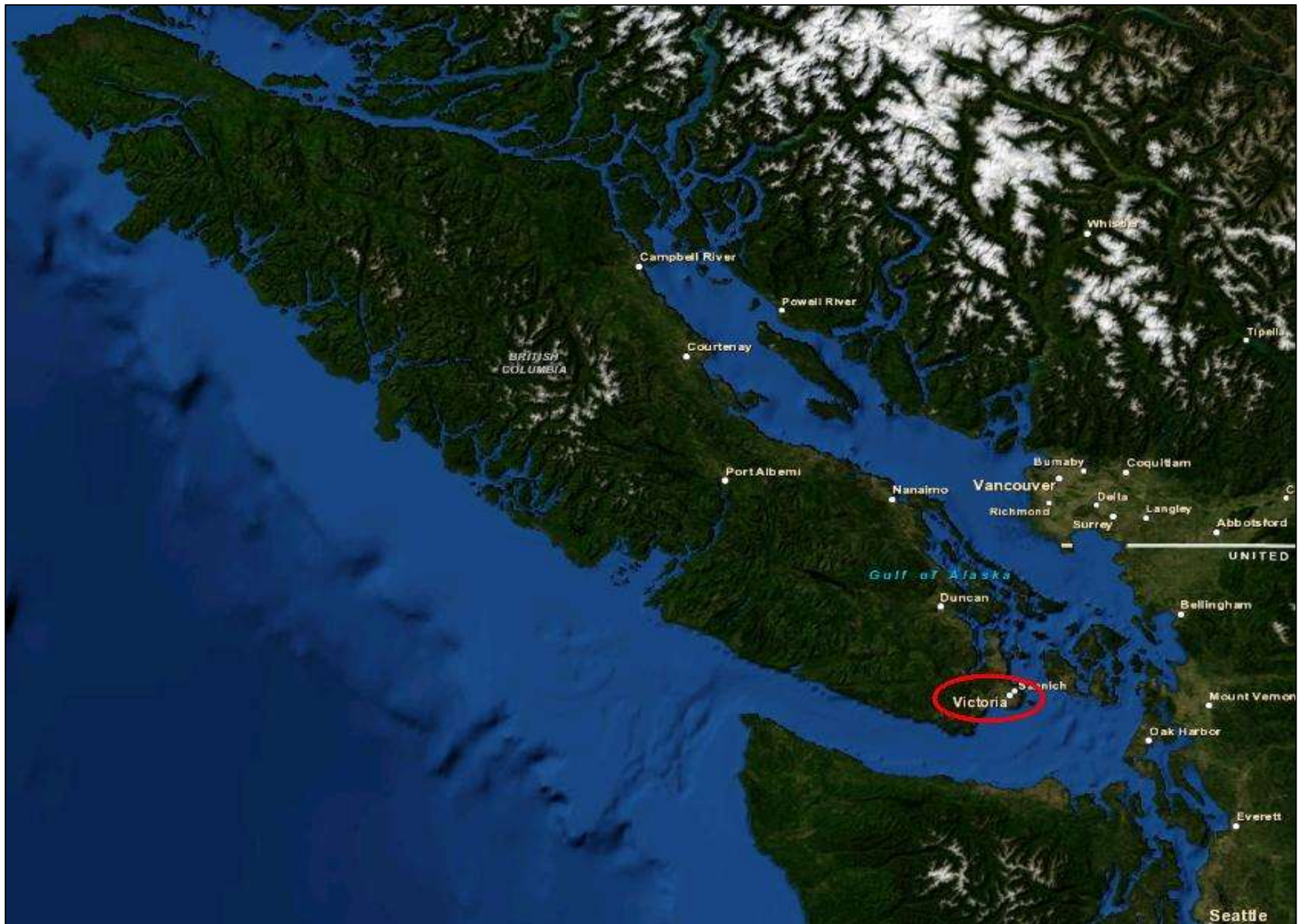
***Brownsville Girl***

**Bob Dylan, Sam Shepard**



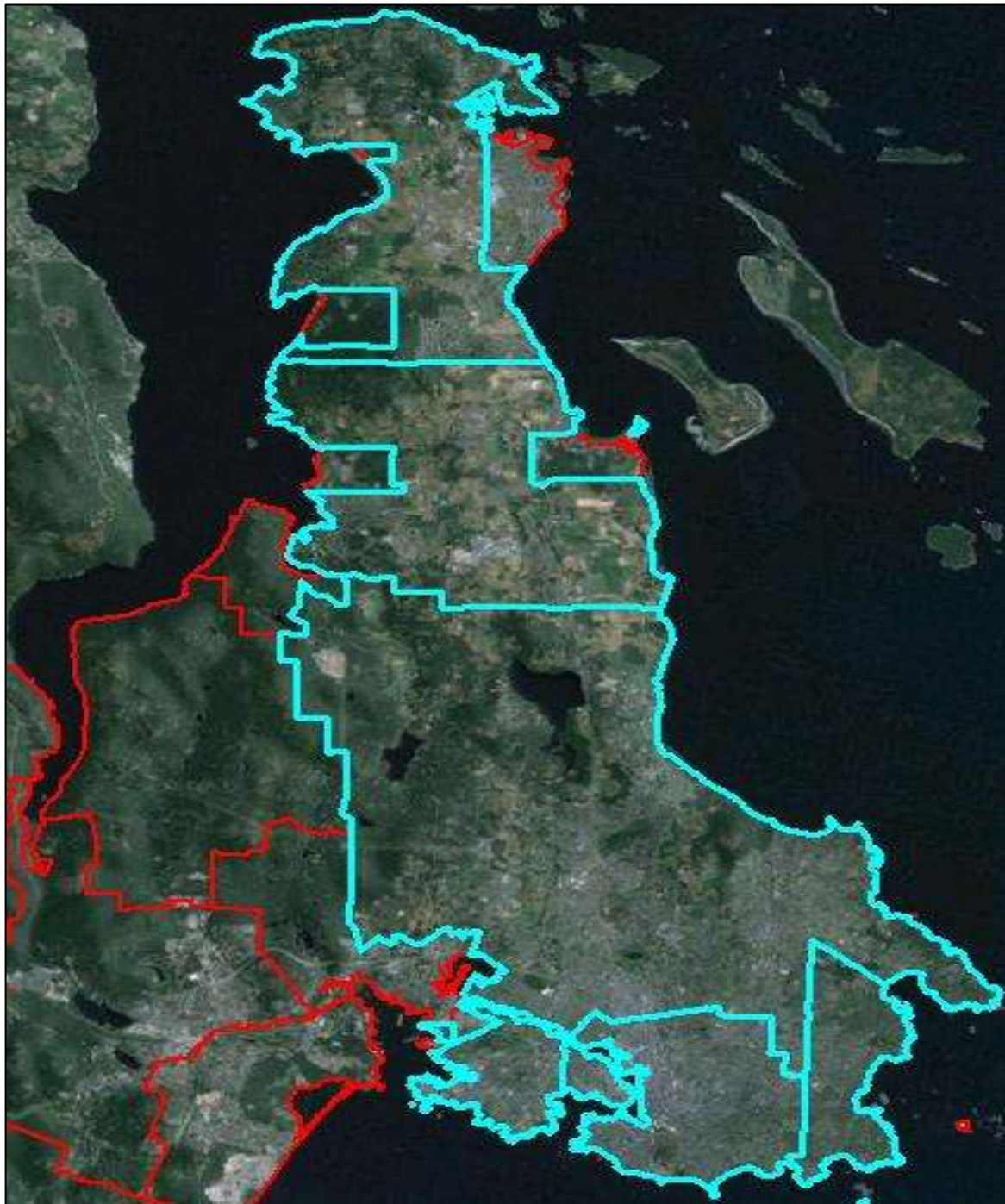


# Where?





Where?

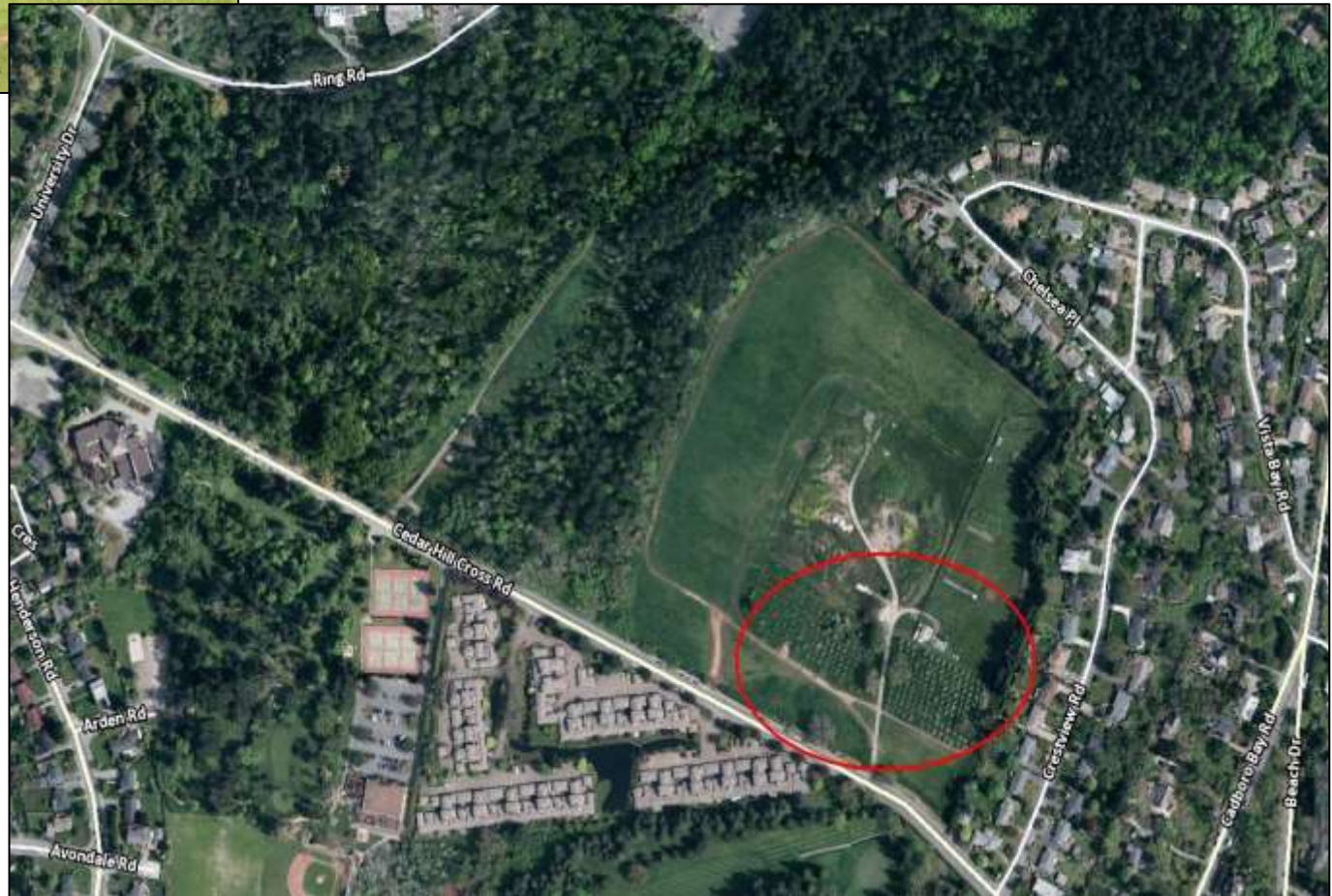




Why? Curiosity...



UVic CJNI lands (dog park)



"regular spacing and alignment of trees..."



**Shelbourne Valley from Mt.Tolmie (1908)**  
*Saanich Archives Photo 1989-008-175*



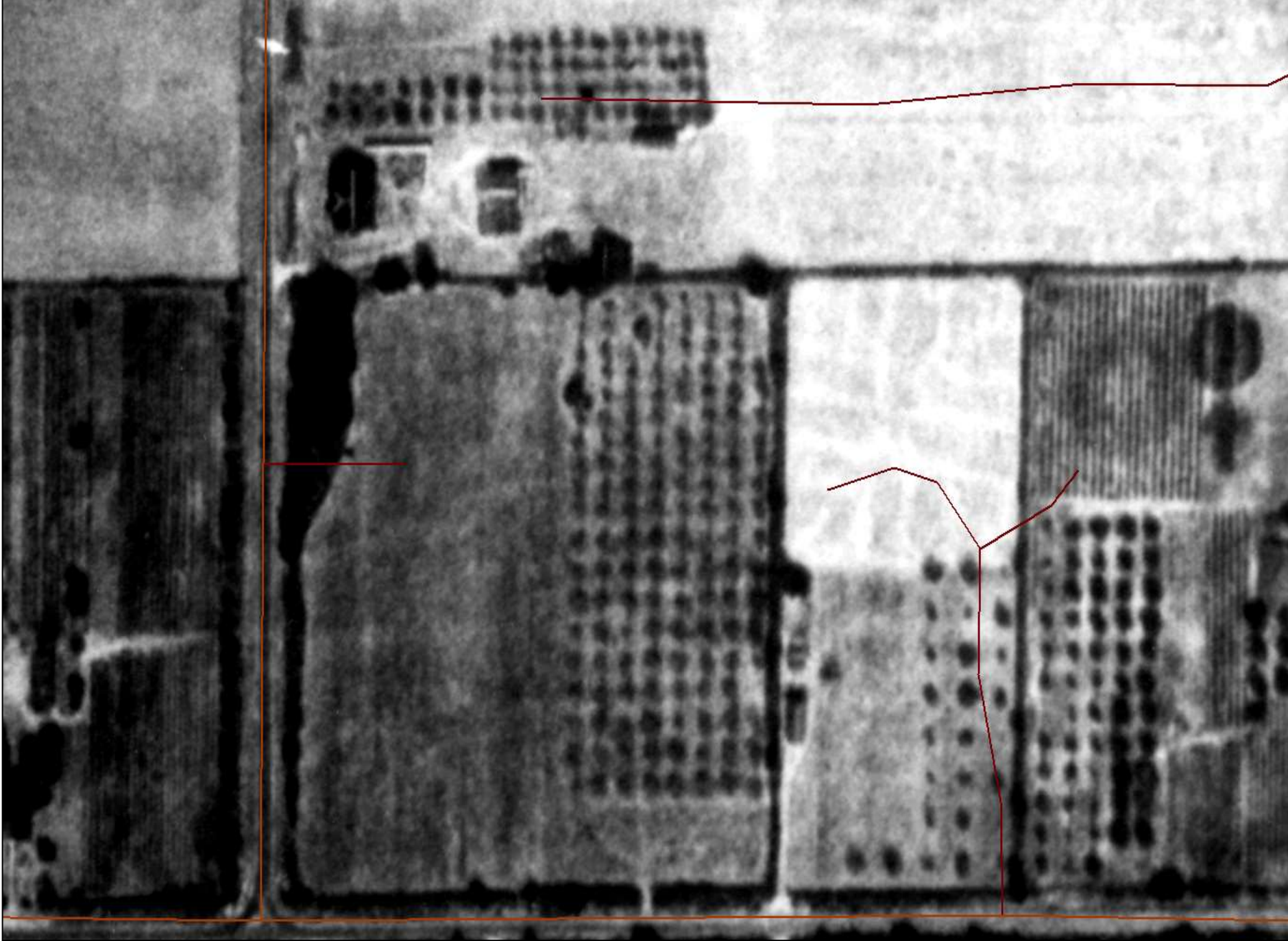
**"...near human occupancy..."**  
*Aerial Photography and Image Interpretation*  
**(Paine & Kiser, 2012)**

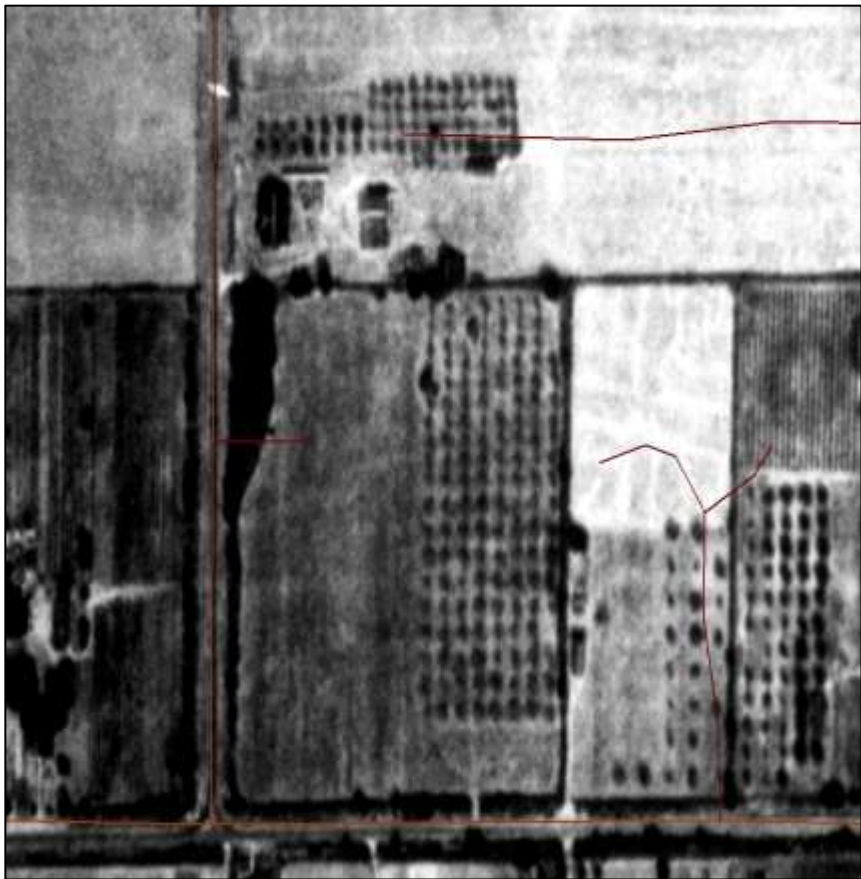
**A227-70 (1928)**







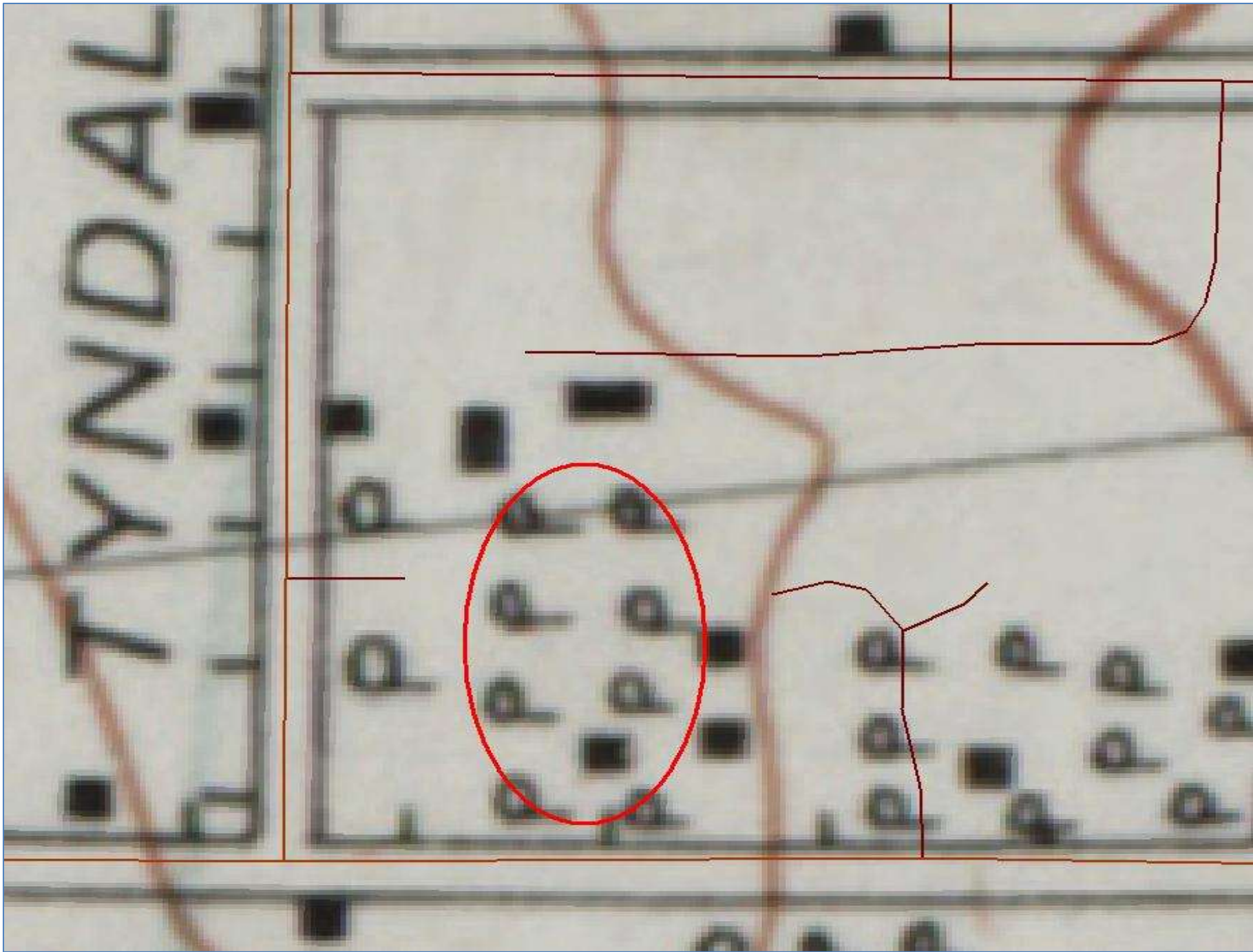




**BA24-37**









How?





How?

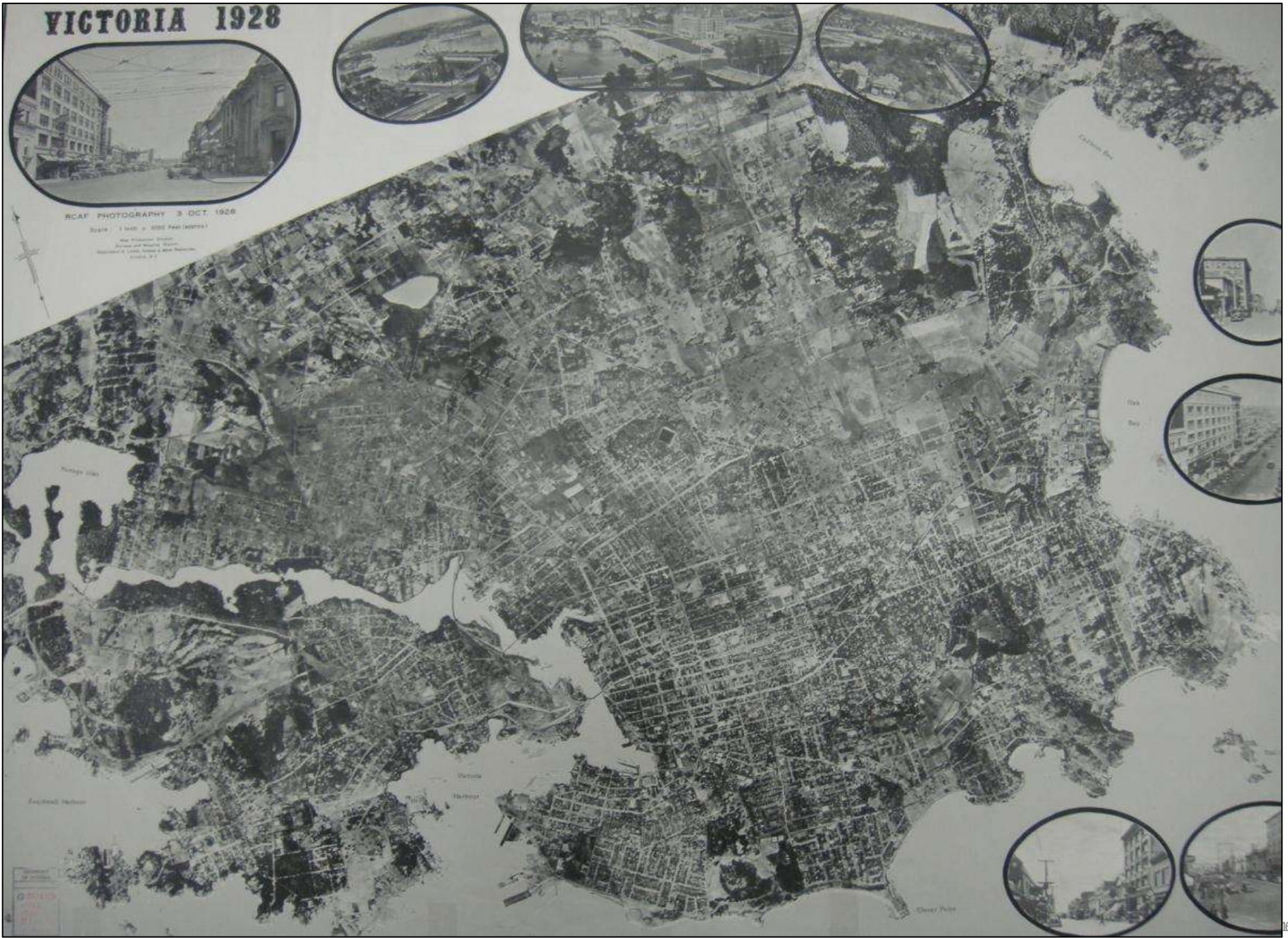
# VICTORIA 1928



BCAF PHOTOGRAPHY 3 OCT. 1928

Scale 1 inch = 5000 Feet (1524m)

Map Projection: Project  
of the Air Photo  
Photogrammetric  
Control, U.S. Army, War Department,  
Wash., D.C.







TOOLBOX



ZOOM IN



ZOOM OUT



FULL



ZOOM PREV



PAN



SRCH AREA



CLEAR AOI



PRINT

## Search Results - Air Photos (69 selected)

New Search

Zoom To: Extent of Selected Features

Go

### Filter Search Results

Age or Year: **Oldest**

Colour/B&W: Any

Nominal Scale Range: Any

Operation Tag: B-036-IN-64

Filter Search Results

Change How Air Photos are Displayed

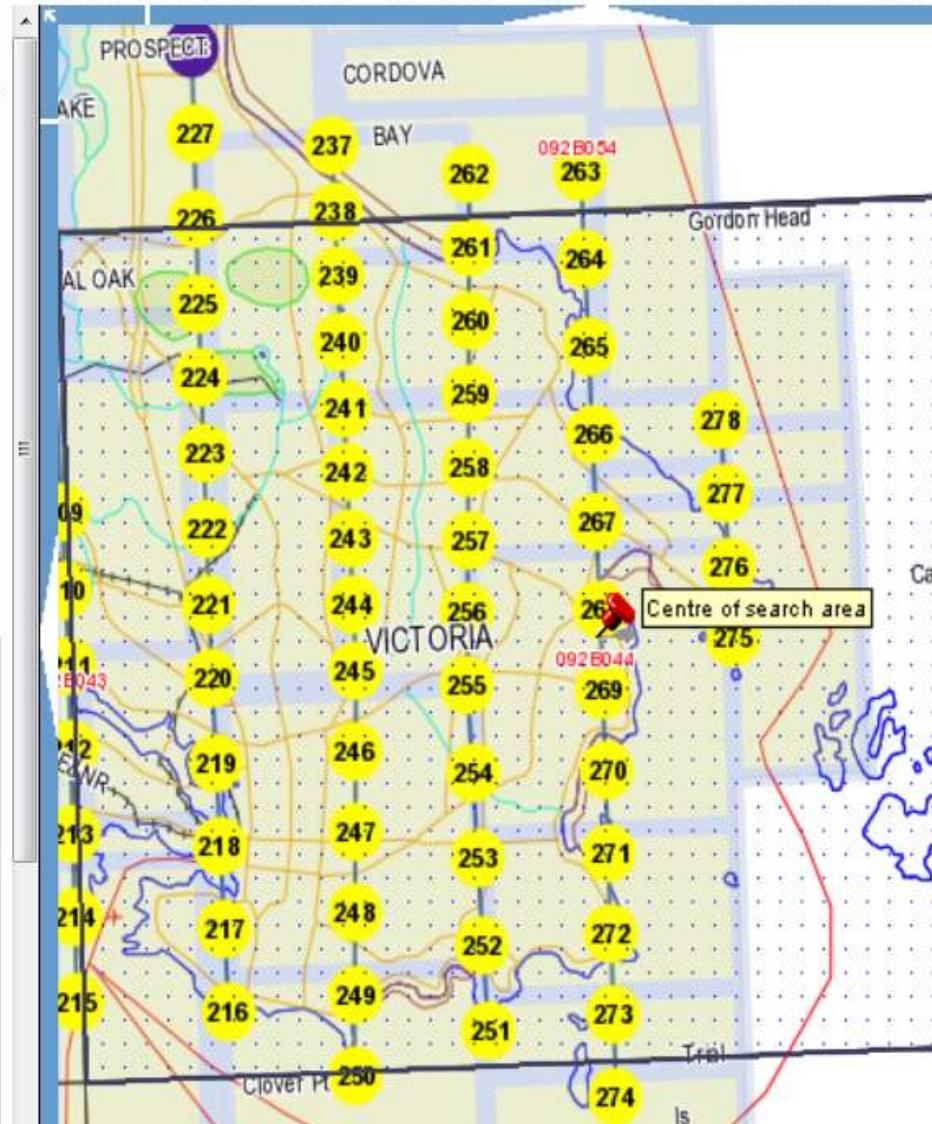
Graphically Select Individual Air Photos

You have selected the following 69 Air Photos:

LIBRARY: BC Air Photo Warehouse

15BC5091/0159-0161,0204-0227,0237-0278

**Roll:** 15BC5091  
**Frame:** 265  
**Is Colour:** No  
**Is Digital:** No  
**Date:** **May 15, 1964** 5:7:0 PST  
**Substandard:** No  
**Nominal Scale:** 15840  
**Flying Height:** 1890 metres





# National Earth Observation Data Framework Catalogue

[Background](#)  
[Search criteria](#)  
[Maps](#)  
[Selection method](#)  
 Enter Coordinates  
 Draw on map  
 **Geographic Location**  
[Acquisition dates](#)  
 From (YYYY-MM-DD):  
  
 To (YYYY-MM-DD):  
  
 Linear Period  
 Seasonal Period  
  
[Your area of interest \(AOI\)](#)  
[Satellite](#)  
[Airborne](#)  
  NAPL  
  
[Current map layers](#)

**Keyboard users:** Use the arrow keys to move the map and use plus and minus to zoom.



[Search results](#)

500 results from a total of 500 returns

Aerial Photo

**Save results**

Footprint on the map	Date Acquired	Roll Number	Photo Number	Spectral Range	Scale	Metadata	Zoom on map	Order	Info
<input checked="" type="checkbox"/>	1926-08-23	BA27	37	Black&White	9000	<a href="#">See Meta</a>		<input type="checkbox"/>	?
<input type="checkbox"/>	1926-08-23	BA27	36	Black&White	9000	<a href="#">See Meta</a>		<input type="checkbox"/>	?
<input type="checkbox"/>	1926-08-23	BA27	35	Black&White	9000	<a href="#">See Meta</a>		<input type="checkbox"/>	?







How?

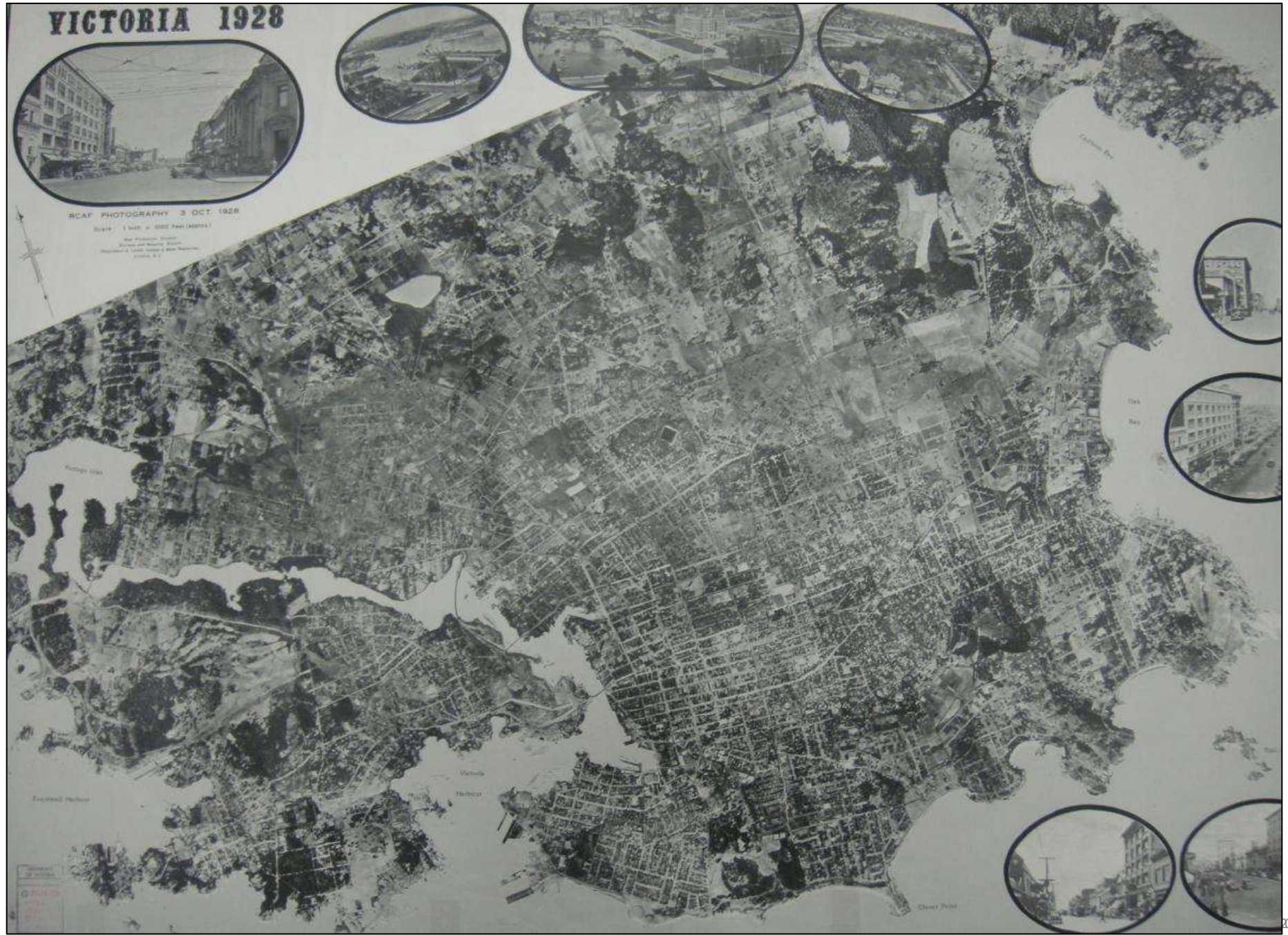
# VICTORIA 1928



BCAF PHOTOGRAPHY 3 OCT. 1928

Scale 1 inch = 5000 Feet (1524m)

Map Projection: Projected  
Meters and Feet  
Horizontal: UTM, Vertical: Mean Sea Level  
Datum: NAD 83



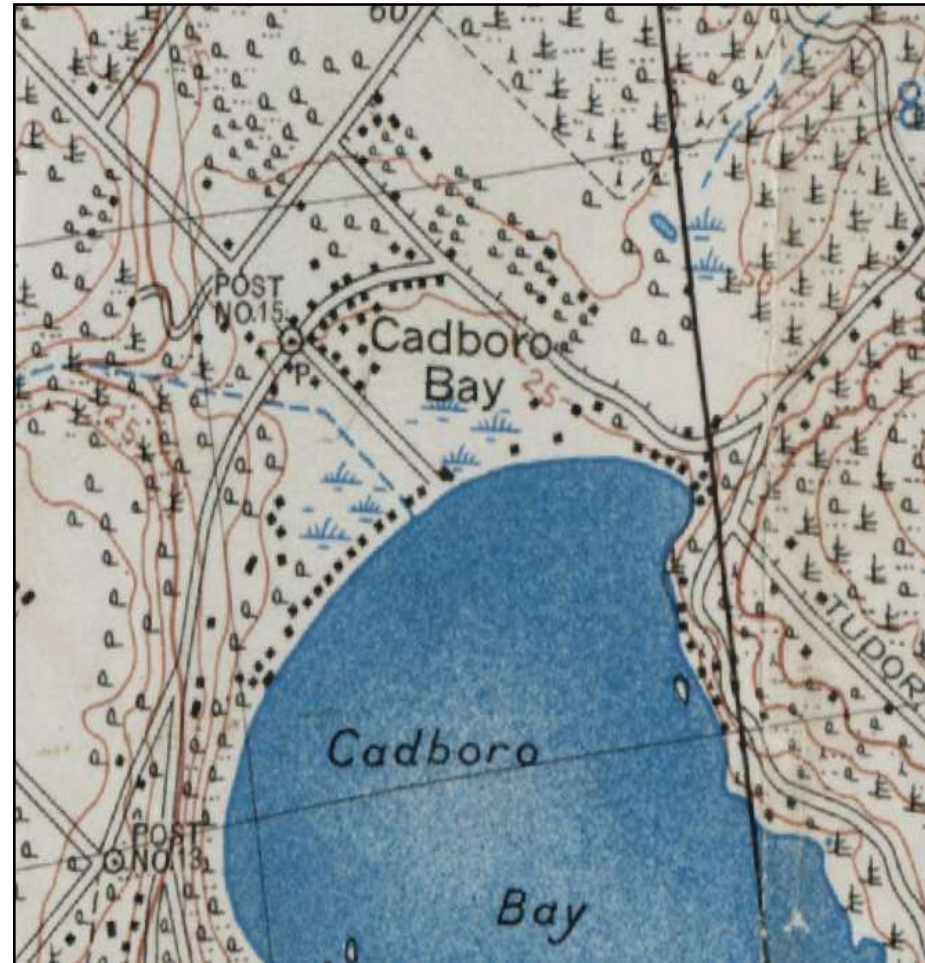
© 1928  
BCAF  
PHOTOGRAPHY



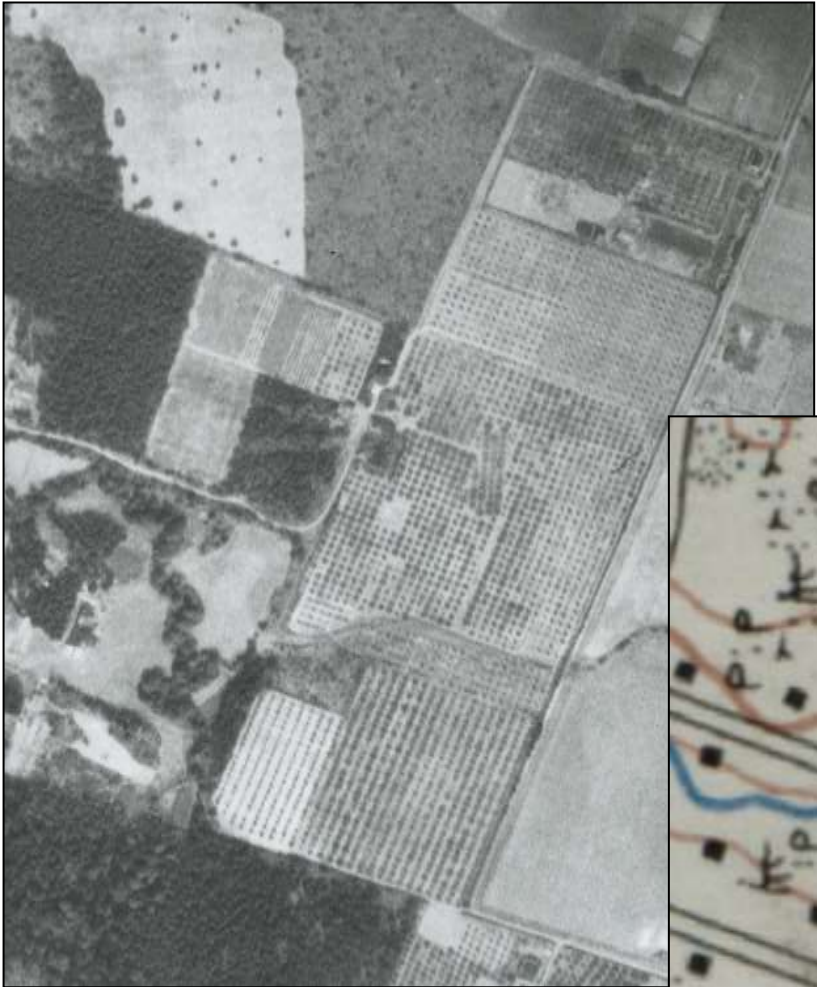
## How? Hundreds of aerial photos: 1926 and 1928



A227-65 1928





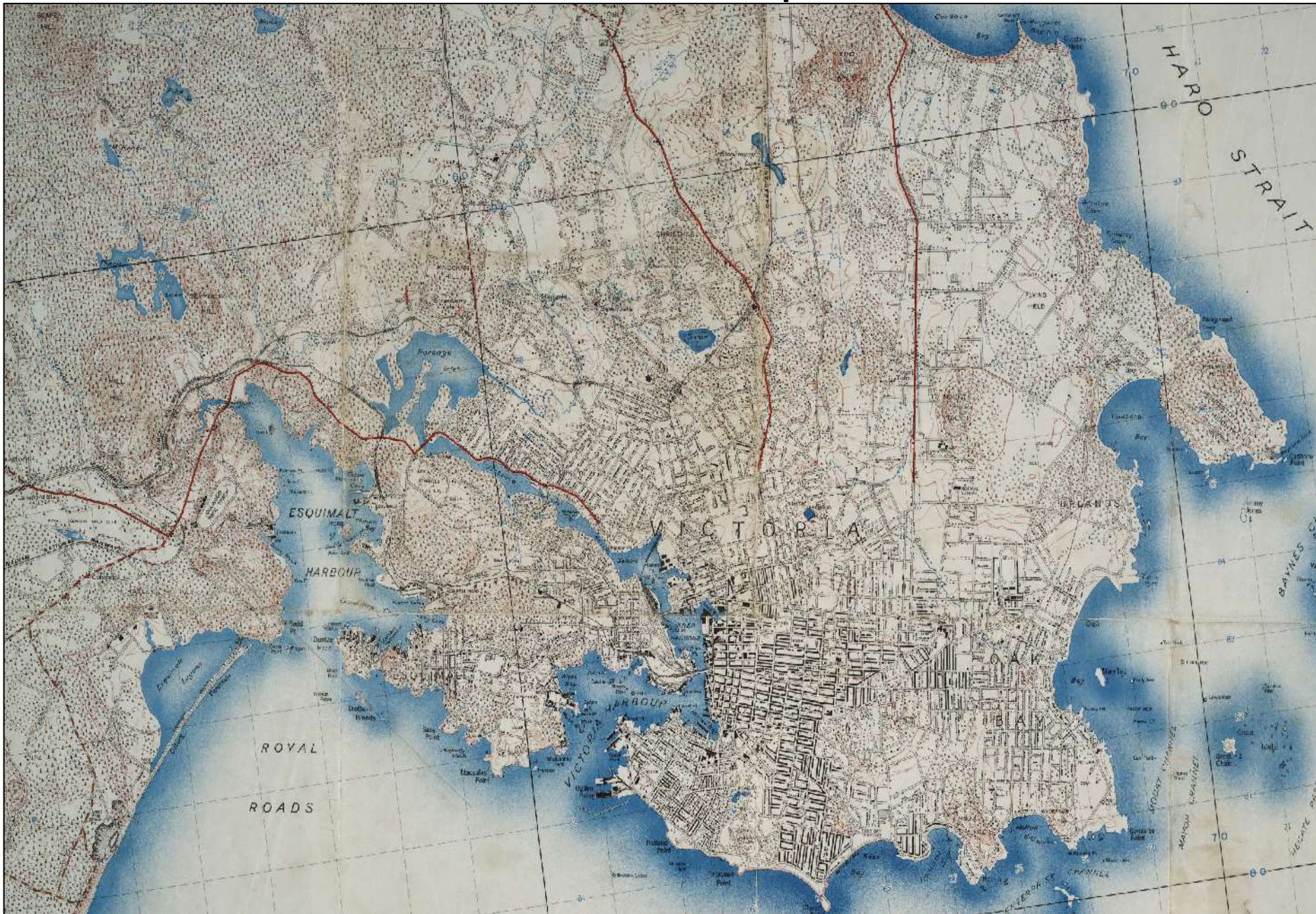


BA25-48 1926





# 1934 Victoria map





# geo-reference 1934 Victoria map to current road/street network





# geo-reference airphotos to current road/street network & 1934 Victoria map





## **Make public?**

**At minimum,**

**want users to be able to click on / off layers of the:**

**- historic air photos**

**- 1934 Victoria map**

**- current roads / streets**

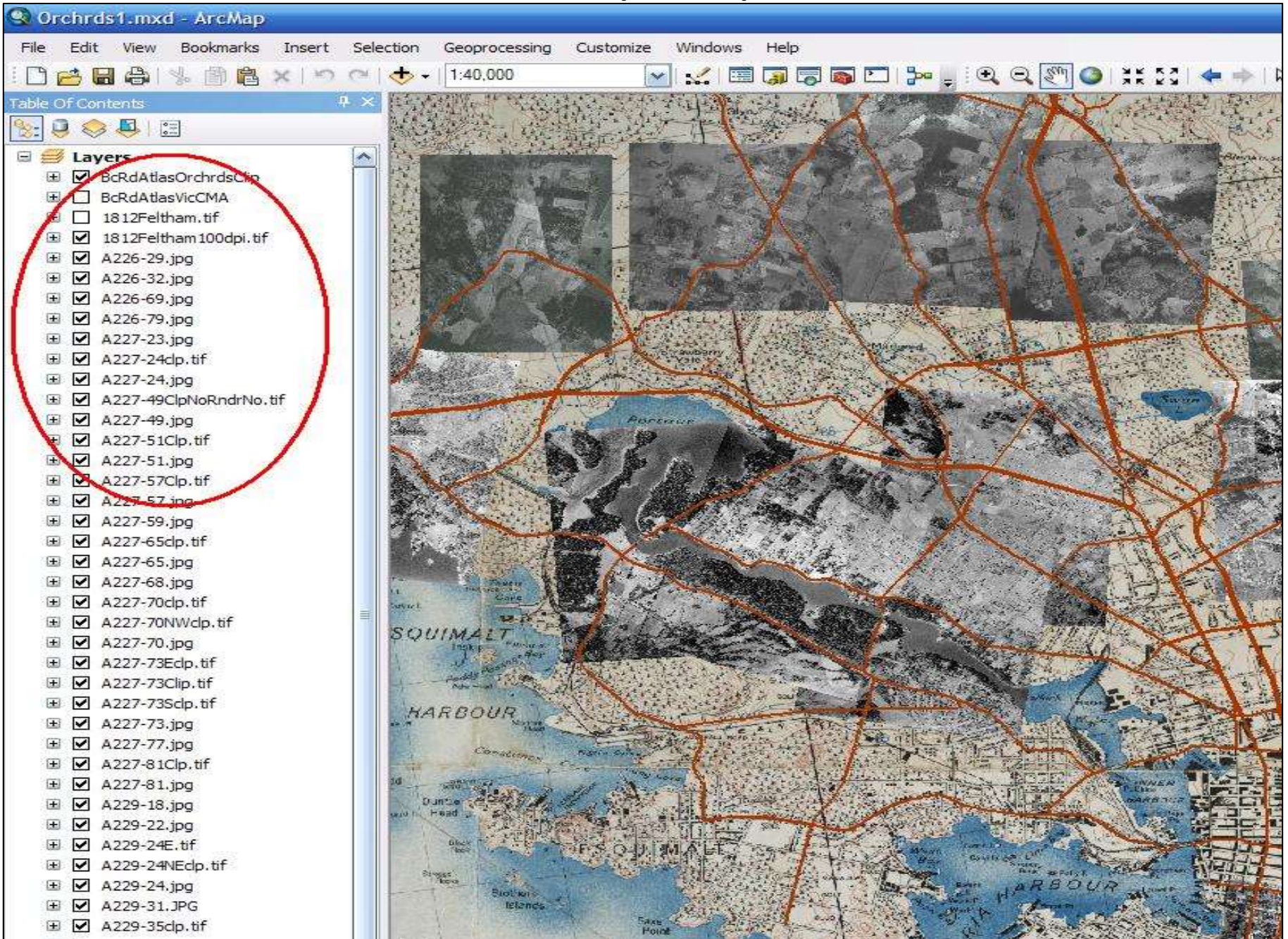


# geo-reference 1934 Victoria map to current road/street network





# ArcMap desktop





## **Make public: How?**

- **ArcGIS On-Line (currently) does not support raster files**
  - **GeoCommons (currently) does not support raster files**
- **QGIS-Cloud (currently) does not support raster files**
- **generate .pdf from ArcGIS or QGIS but both...**
  - **“flatten” 2 or more raster layers into one inseparable layer**

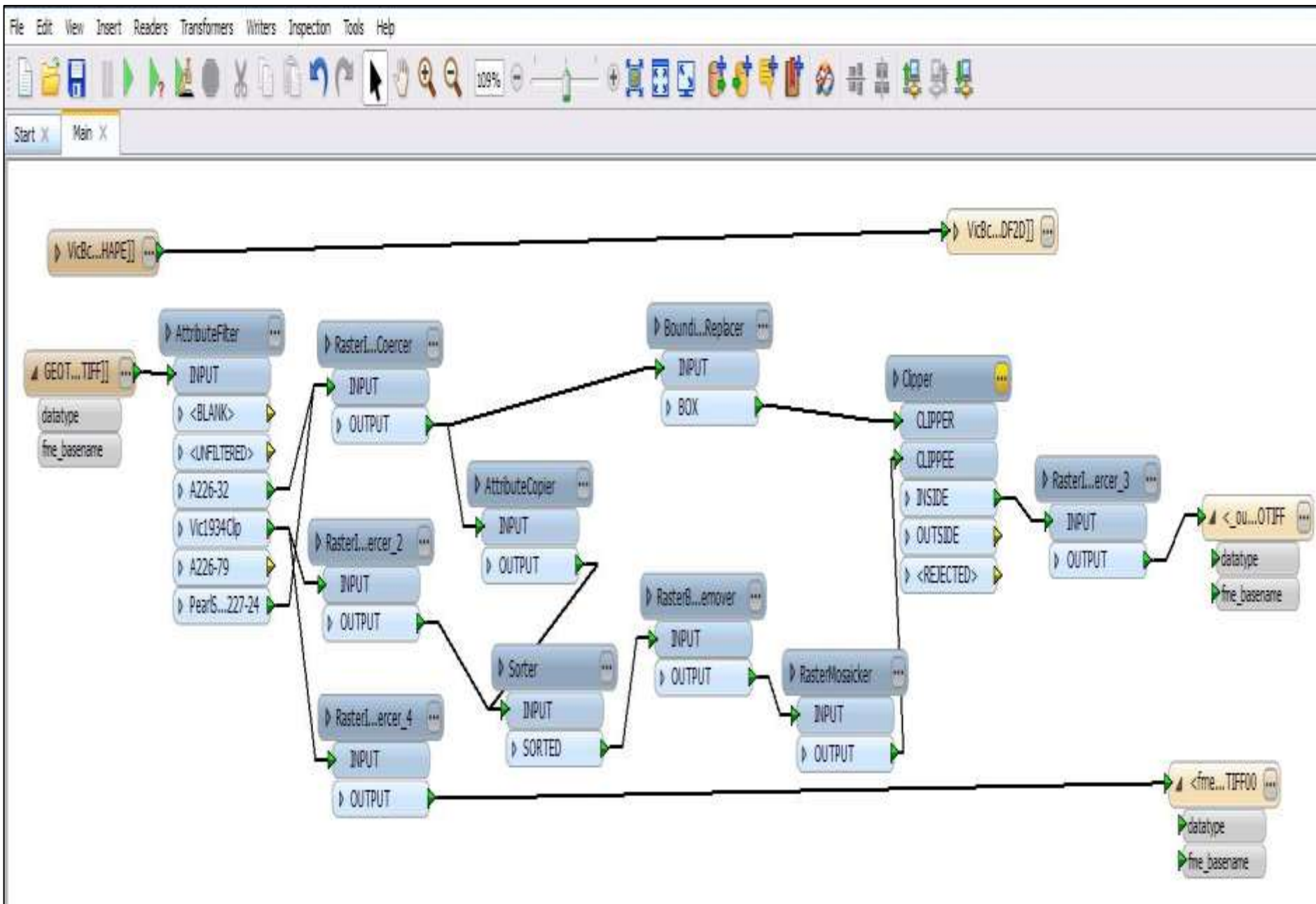


## Make public: How?

- **Adobe Illustrator (to generate a .pdf)**
  - **does not support geo-ref'd files**
  
- **MAPublisher (Avenza): plug-in for AI**
  - **cannot delete / eliminate “no data” area of geo-ref'd raster file**
  - **need to clip raster inside of “no data”**
  - **\$800 year single license**



# Safe FME translator(s) (Feature Manipulation Engine)





## Make public: How?

### on-line map service(s)

- **CartoDB**
  - 5 mb (not enough space!) free
  - 50 mb \$30/month
  - 100 mb \$50/month
- **GIS-Cloud**
  - “special” of \$100/month
  - 60% off for lifetime subscription...going....gone??

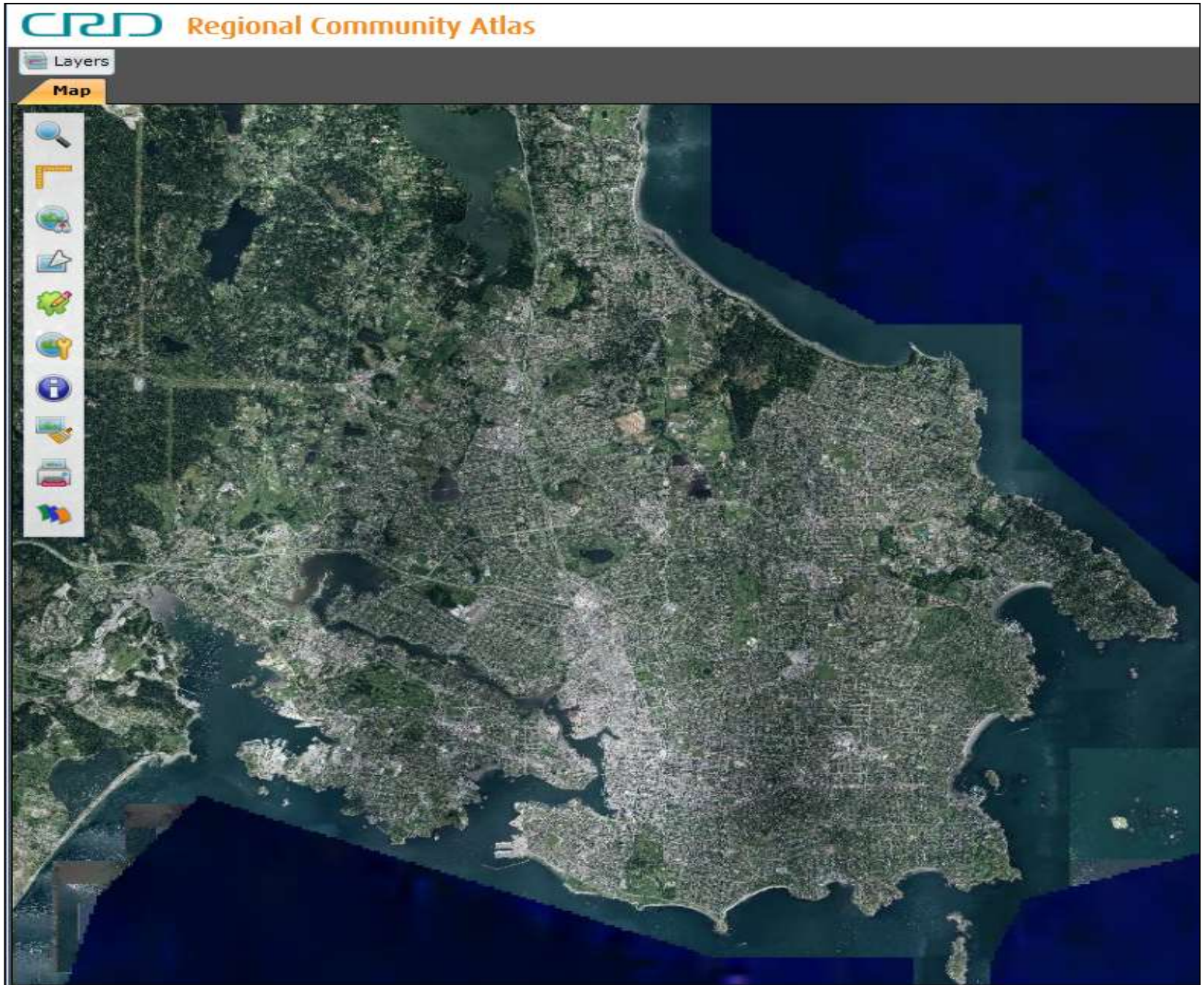


# MapBox / TileMill 50mb Free! 250mb \$5/month





# community partnership...





**further research?**

***Canada Census of Agriculture 1921 to most recent 2011***  
**(Orchards / Tree Fruits)**

**but...**

**terminology changes**

**and**

**Incorporated (geographic) areas are added**



**1921: only Victoria recorded: 153 acres of farm land (3%) in city of 4800 acres  
no mention of Orchards; small Fruit: 5 acres**





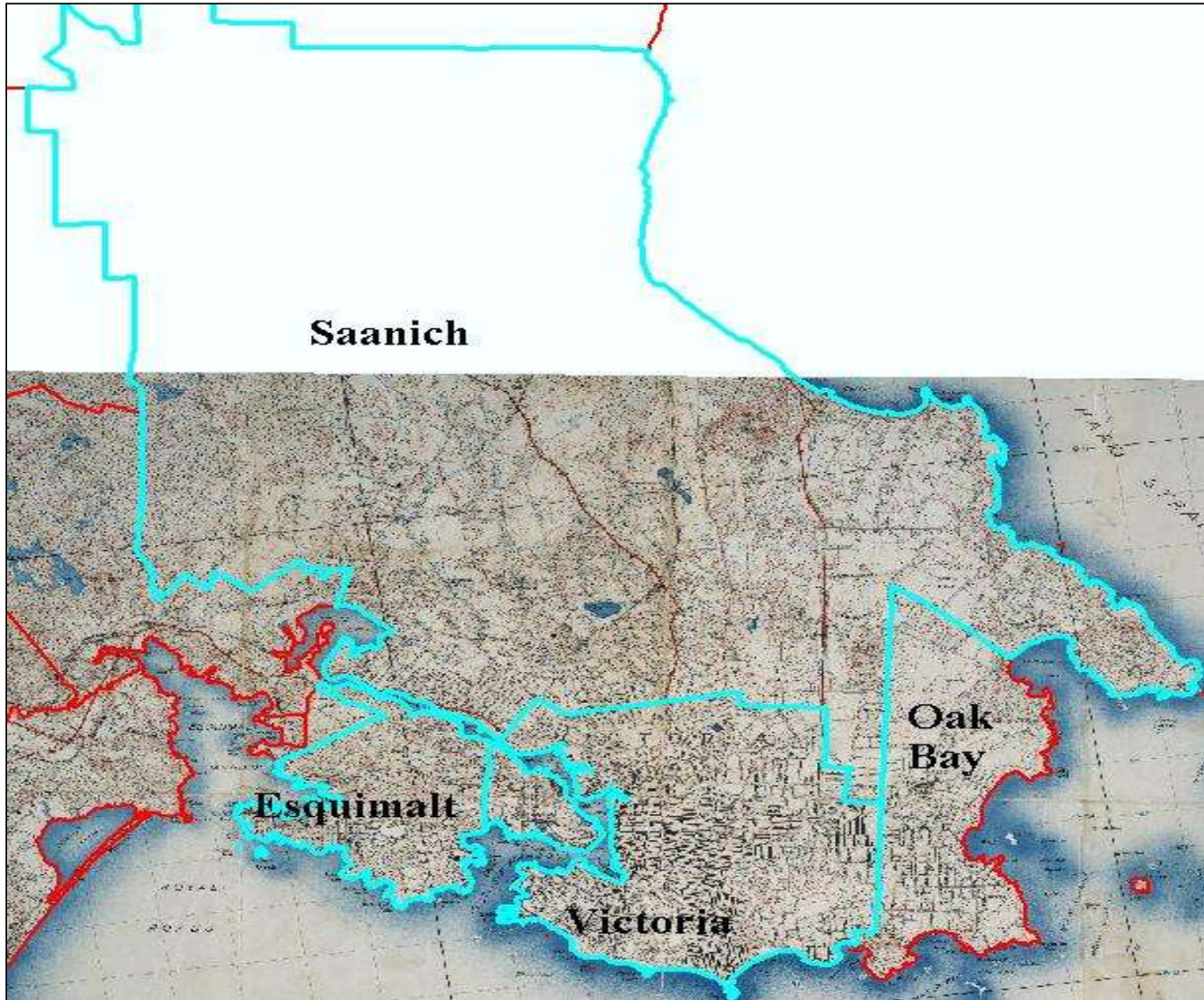
**A226-62 Fernwood, 1928**





**1931: Esquimalt, Oak Bay, Saanich (Victoria City is no longer recorded)**

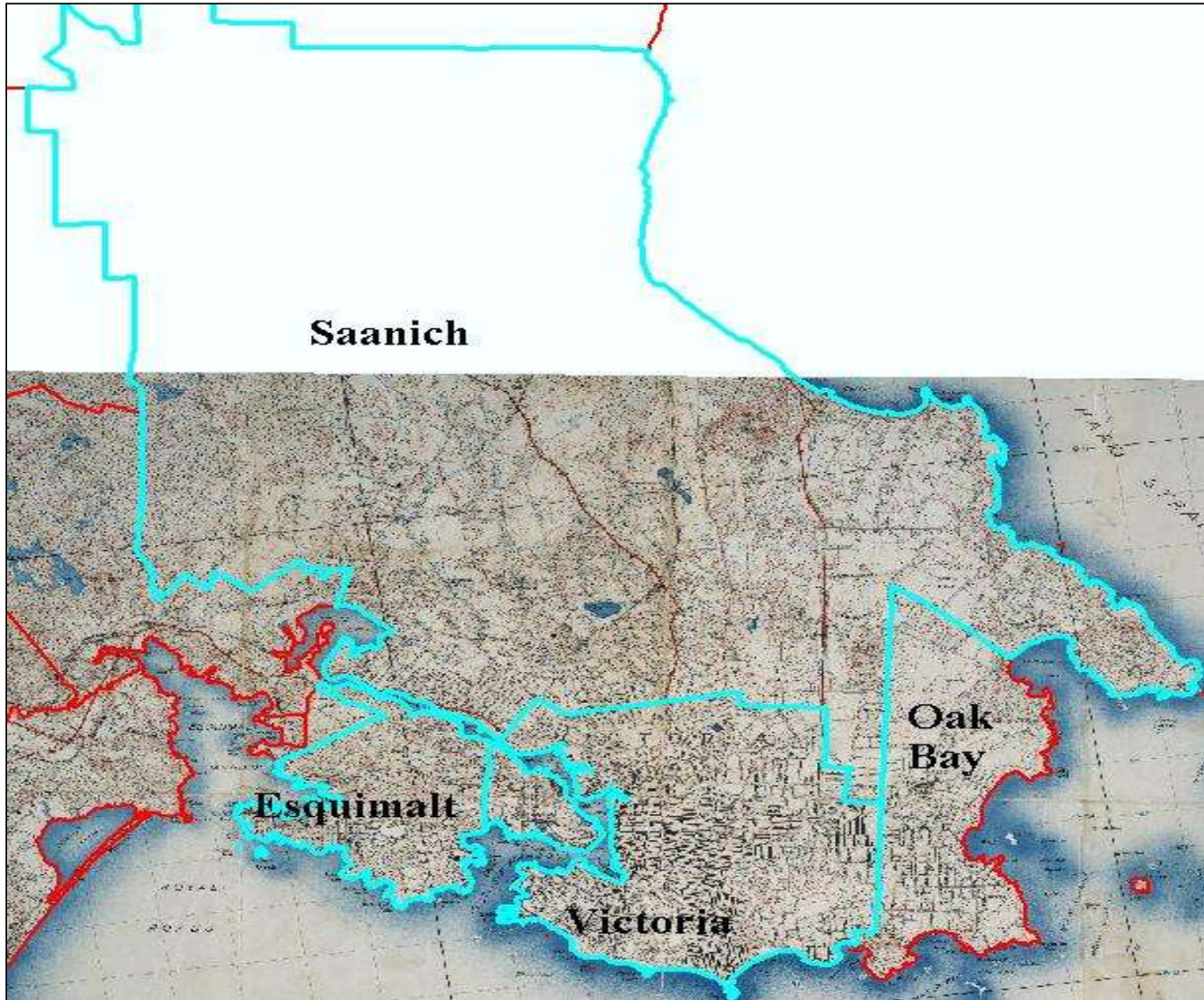
**Orchard and Vineyards: 719 acres**





**1941: Esquimalt, Oak Bay, Saanich**

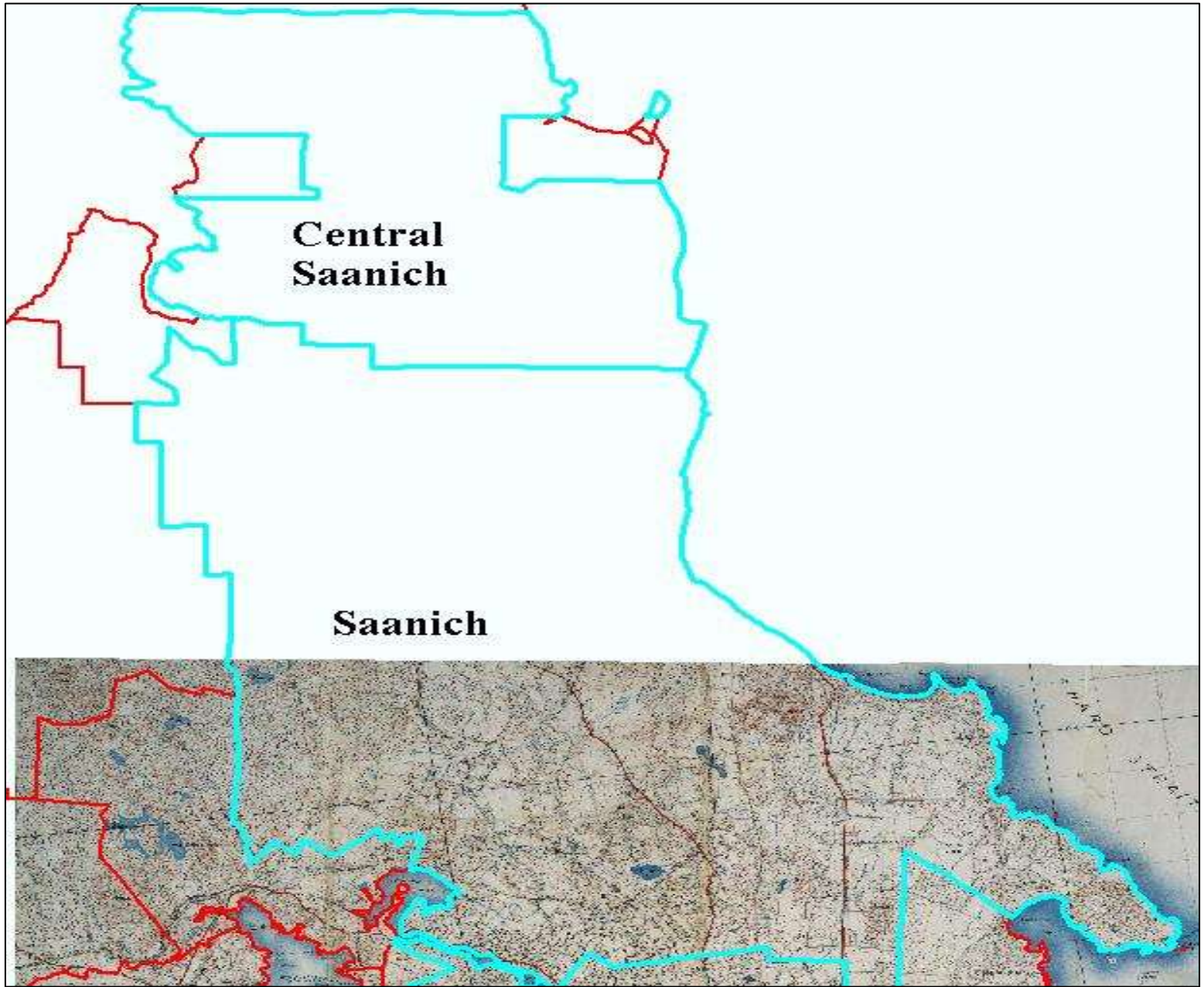
**Orchard and Vineyards: 234 acres: 67% decrease from 1931**





**1951: only Central Saanich and Saanich recorded**

**Tree Fruits: 12 acres      1961: 11 acres**





**2001: Capital Region District (CRD): apples, apricots, cherries, peaches, plums  
120 acres (producing and non-producing)**

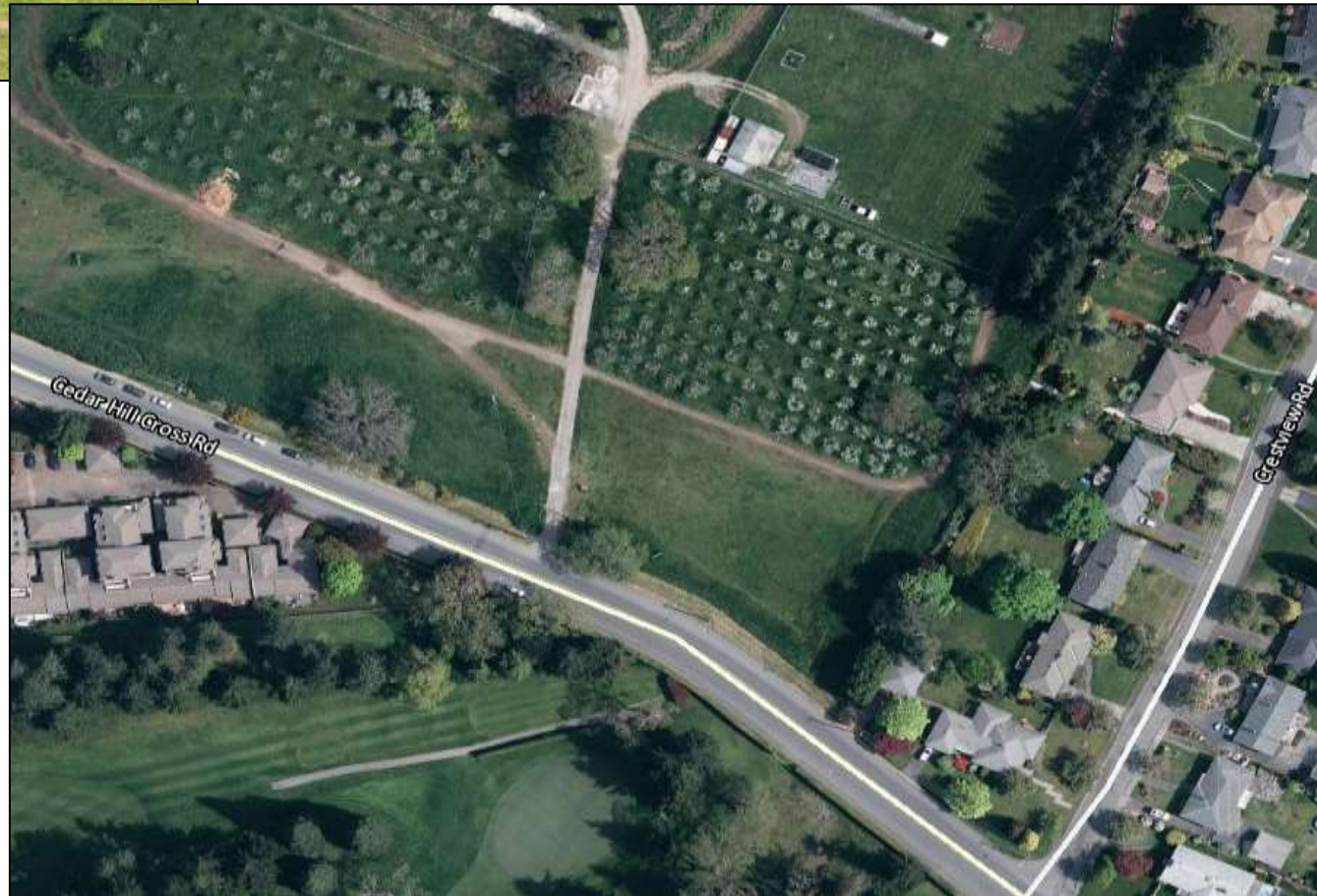
**2011: Capital Region District (CRD): apples, apricots, cherries, peaches, plums  
346 acres (producing and non-producing) 65% increase from 2001**



**Remember UVic lands...**



**UVic CJVI lands (dog park)**





...limitations of using earliest air photos



UVic CJVI farm land: *BC2042-55*, 1956





# UVic CJVI farm land: *BC5091-266*, 1964





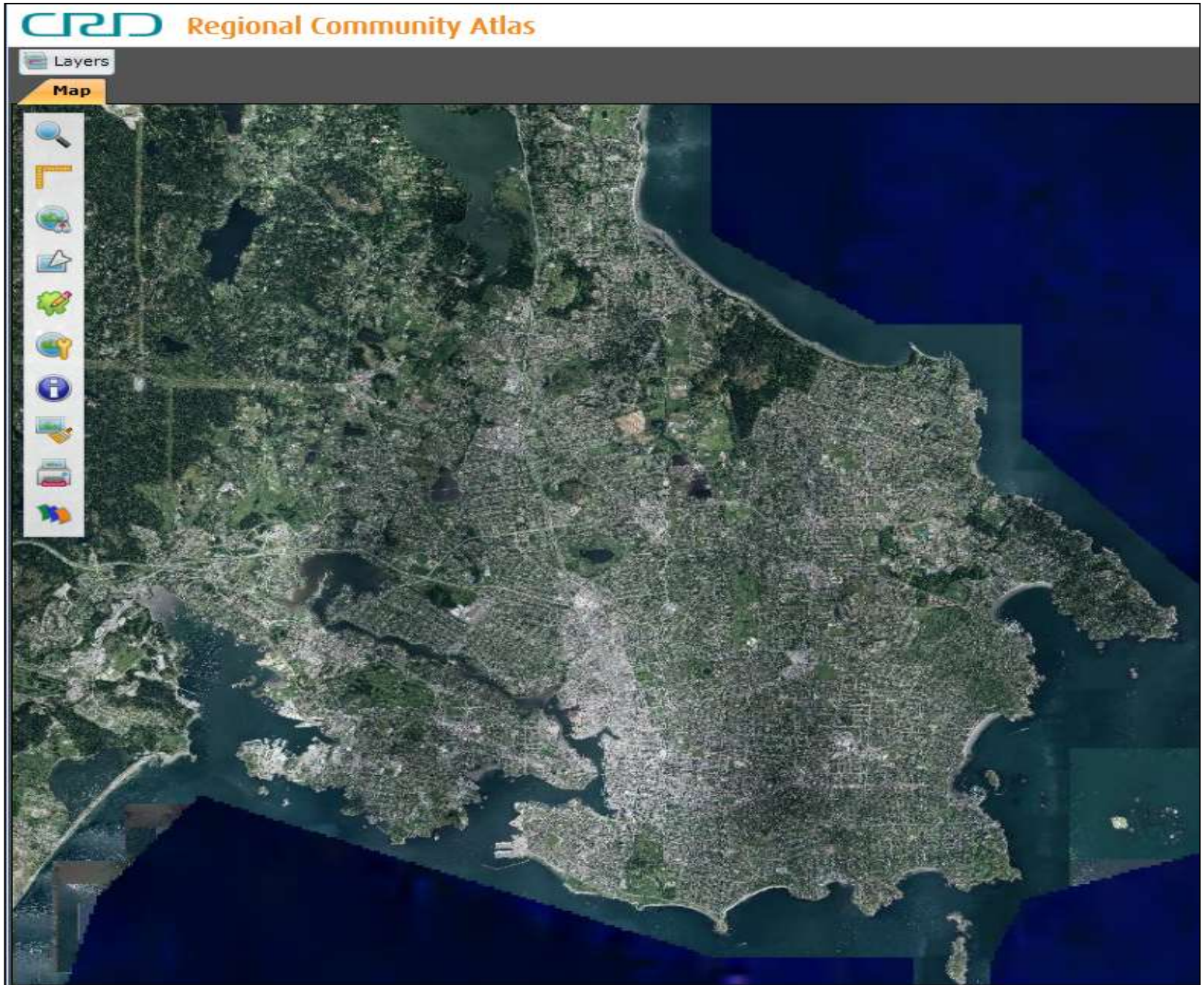


UVic CJVI lands (dog park)





# community partnership...





# community partnership?



**LifeCycles**  
cultivating communities

Home

Initiatives

Resources

Get Involved

About Us

Contact Us

[Home - Initiatives - Fruit Tree Project](#)

## LifeCycles Fruit Tree Project

Thanks to hundreds of volunteers and a couple of ladders, the Fruit Tree Project harvests apples, cherries, pears, and other fruit from privately owned trees that would otherwise go to waste. We then share the harvest among homeowners, volunteers, food banks, and community organizations within Victoria. A unique aspect of this project is that a portion of the harvest is set aside to make value-added products that help defray our costs.

Last season our fantastic volunteers and tree owners made it possible for us to collect and redistribute over 39,000 lbs of fruit that would have otherwise gone to waste.

Another season is upon us! Please join us again



**Support**  
**LifeCycles**  
cultivating communities  
[Donate Here](#)

NewsLetter Signup

Subscribe



**Register**  
Your Trees

If you are a **TREE OWNER** with fruit to share, please use our [online form](#) to register your fruit tree(s) for picking from July 1 until October 31.

PLEASE NOTE: We do our very best to accommodate and meet everyone's needs but are not always able to pick every single tree. We will call homeowners to confirm our arrival time if and when a picking team has been arranged to pick your fruit. Thank you for your patience and support for this important and innovative project!

**Volunteer**  
For Picks

If you are a **VOLUNTEER** with a few hours a week to spare between July and the end of October, we will need Fruit Pickers (lots), Tree Assessors, and Office Volunteers (4 max.).

**New volunteers:** Use our [online form](#) to sign up.  
**Registered volunteers:** [Sign up](#) for Picks





**“Place...is sustained...by the quality of human awareness.”**

