

# Re:Locating the orchards of Victoria, BC 20 yards food diet!



## Contents

- **Why?**
- **What? / How?**
- **Lessons learned / limitations of data**
- **Future**

framework

**“To know a place is also to know the past.  
Place...is the past and the present...Every row of trees...”**

Yi-Fu Tan, 1975. Place: An Experiential Perspective. *Geographical Review* 65(2)



**Jules Pretty (2002)**

## framework (con't)

While...

**“Those who cannot remember the past are condemned to repeat it.”**

George Santayana, *The Life of Reason*, Volume 1, 1905

(Although primarily referring to the discipline of geography) I need to mention:

**“...loud insistence that the history of geography must be explored in order to throw light upon the contemporary...is a way of avoiding looking in the most obvious places...  
...best place to start is...here and now...”**

Barnett, C. (1995). Awakening the dead: who needs the history of geography?. *Transactions of the Institute of British Geographers*, 20(4), 417-419.

**“...previous experience suffuses all present perception...**

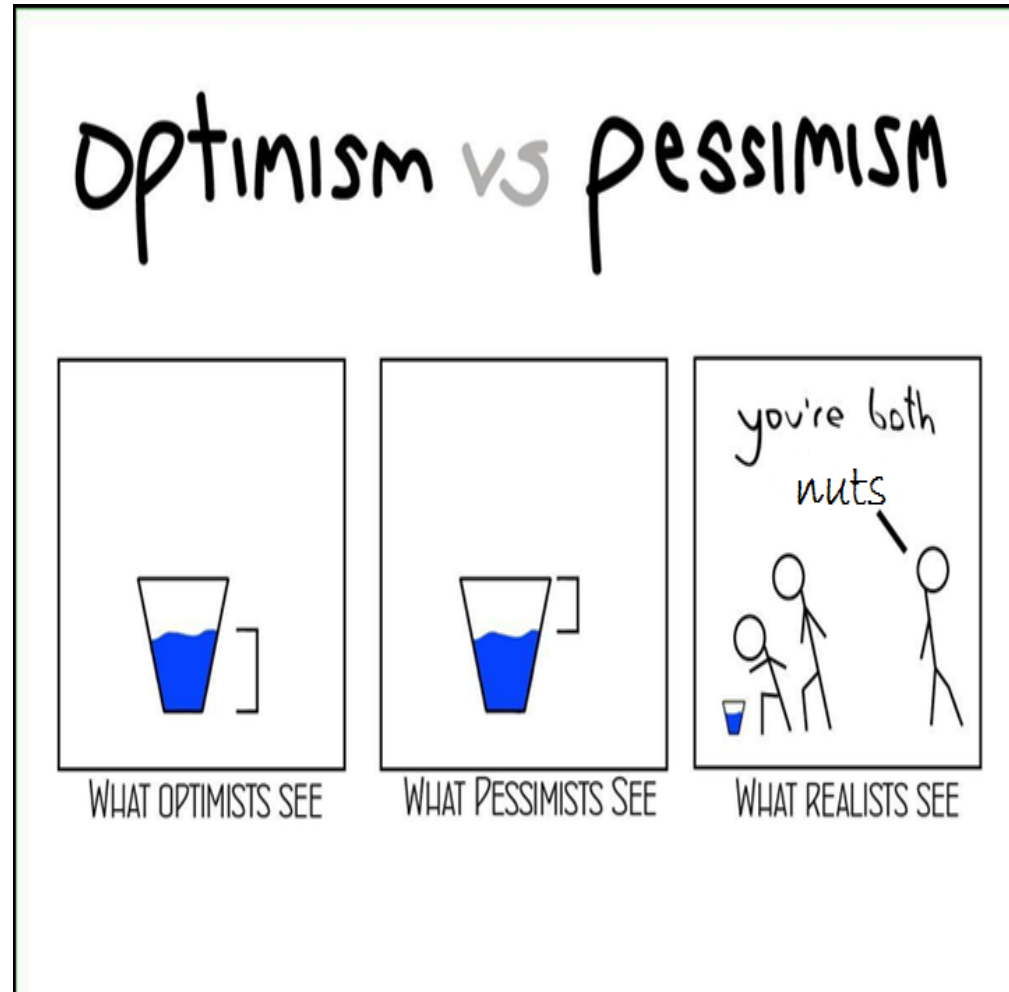
**We need to be sure that we are dealing with the actual past, not with a modern simulacrum..  
...All the lineaments of the present are historical, yet they are continuously reborn in the minds of every culture and of every generation.”**

Lowenthal, D. (1975). Past time, present place: landscape and memory. *Geographical Review*, 1-36.

**The past I have re-constructed is through my eyes.**

## Why?

- 20 yards
- local
- food bank
- tree pruners
- provide sense of past
- community engagement
  
- loss of trees and forests
  
- planting new fruit trees
- Fruit Tree Project





# Why?



**Plant-a-Fruit-Tree-Day**  
(a celebration of National Tree Day)

Free to attend!

- Mini How-to Workshops
- Fruit & Nut Tree Sales
- Planting of Fernwood Orchard
- Live Music + Food Trucks

at the Fernwood Community Centre

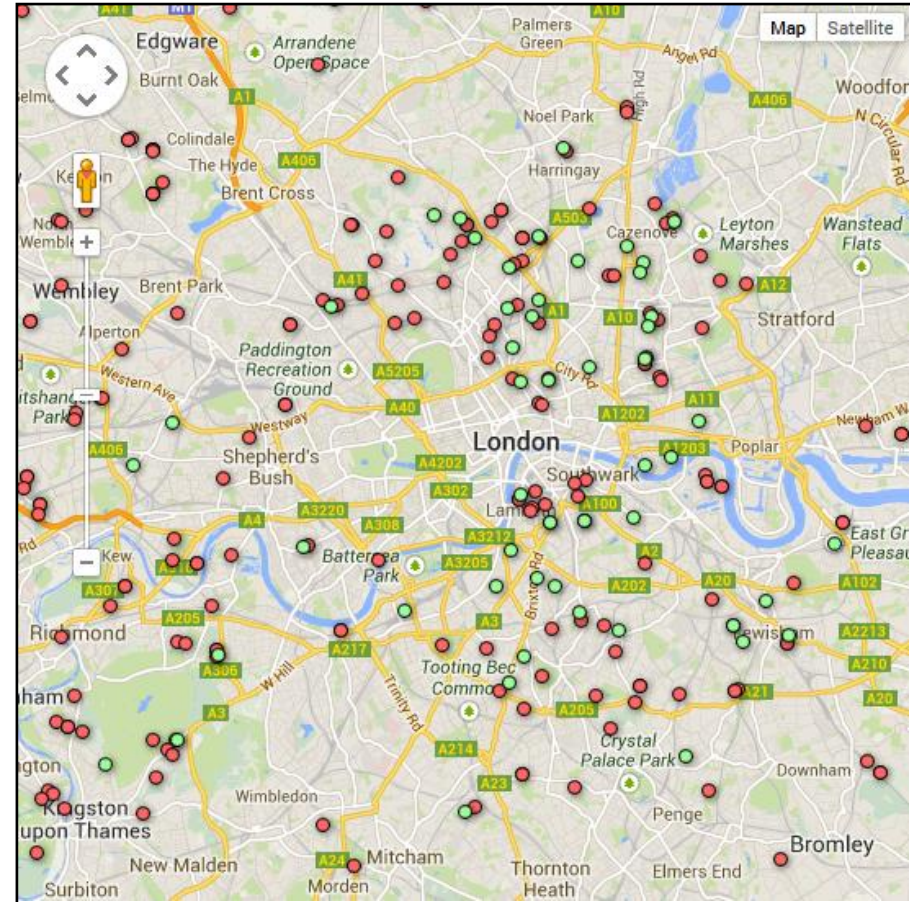
Followed with a talk by Seann Dony of Sole Food Farms - Vancouver | Tickets \$20

**September 28, 2013**  
10am-4pm

Fernwood NRG  
Your Neighbourhood Resource Group

London Community Orchard

The poster features a decorative border of various fruits and a silver watering can at the bottom left. A silver fork is positioned at the top center, with a small plant growing from its tines.



**Feb. 22, 2014**  
**Fruit tree pruning clinic**  
**Royal Roads University**

**“...You always said people don’t do what they believe in,  
they just do what’s most convenient,  
then they repent...”**

***Brownsville Girl***

**Bob Dylan, Sam Shepard**

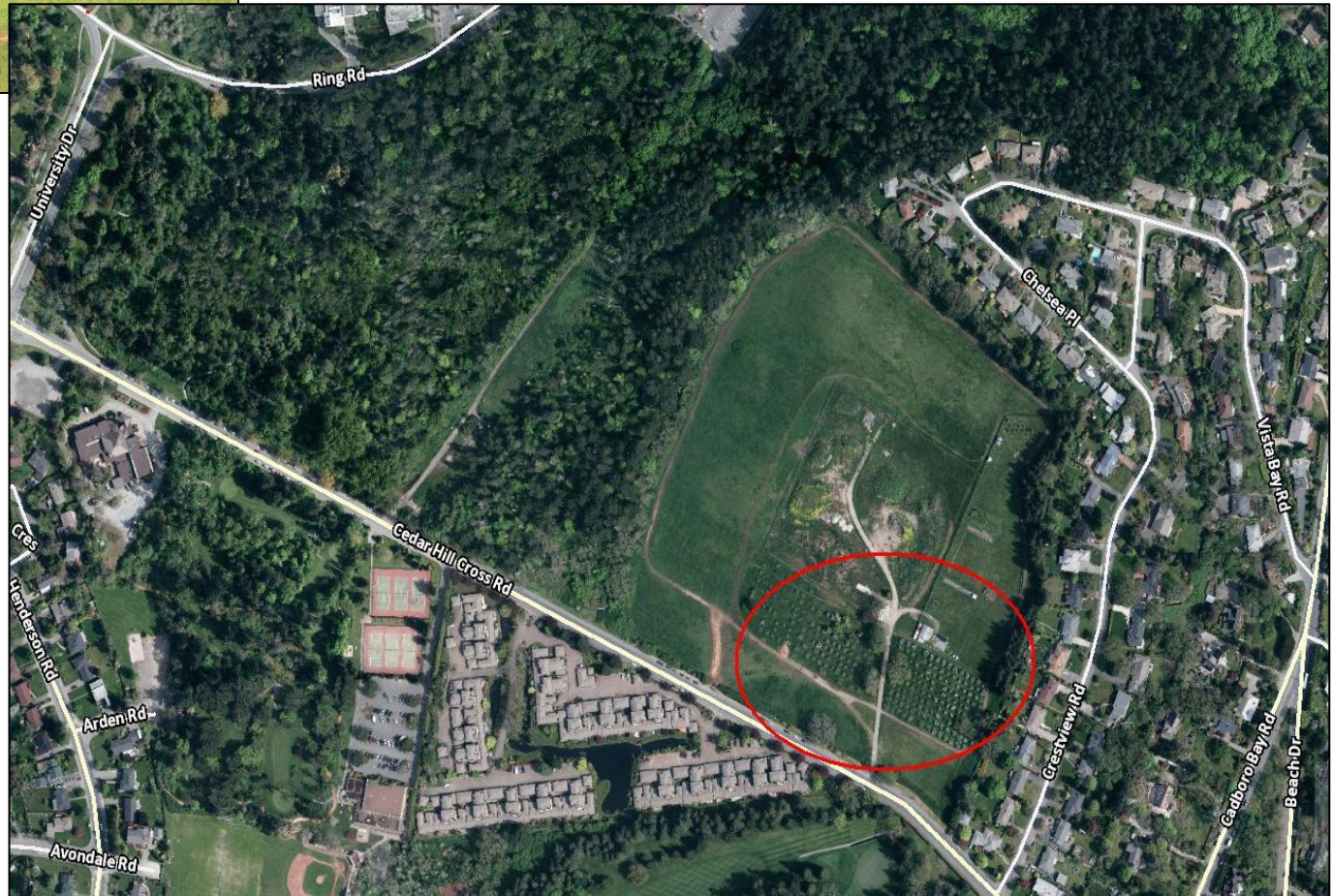




Why? Curiosity...



UVic CJI lands (dog park)









"regular spacing and alignment of trees..."



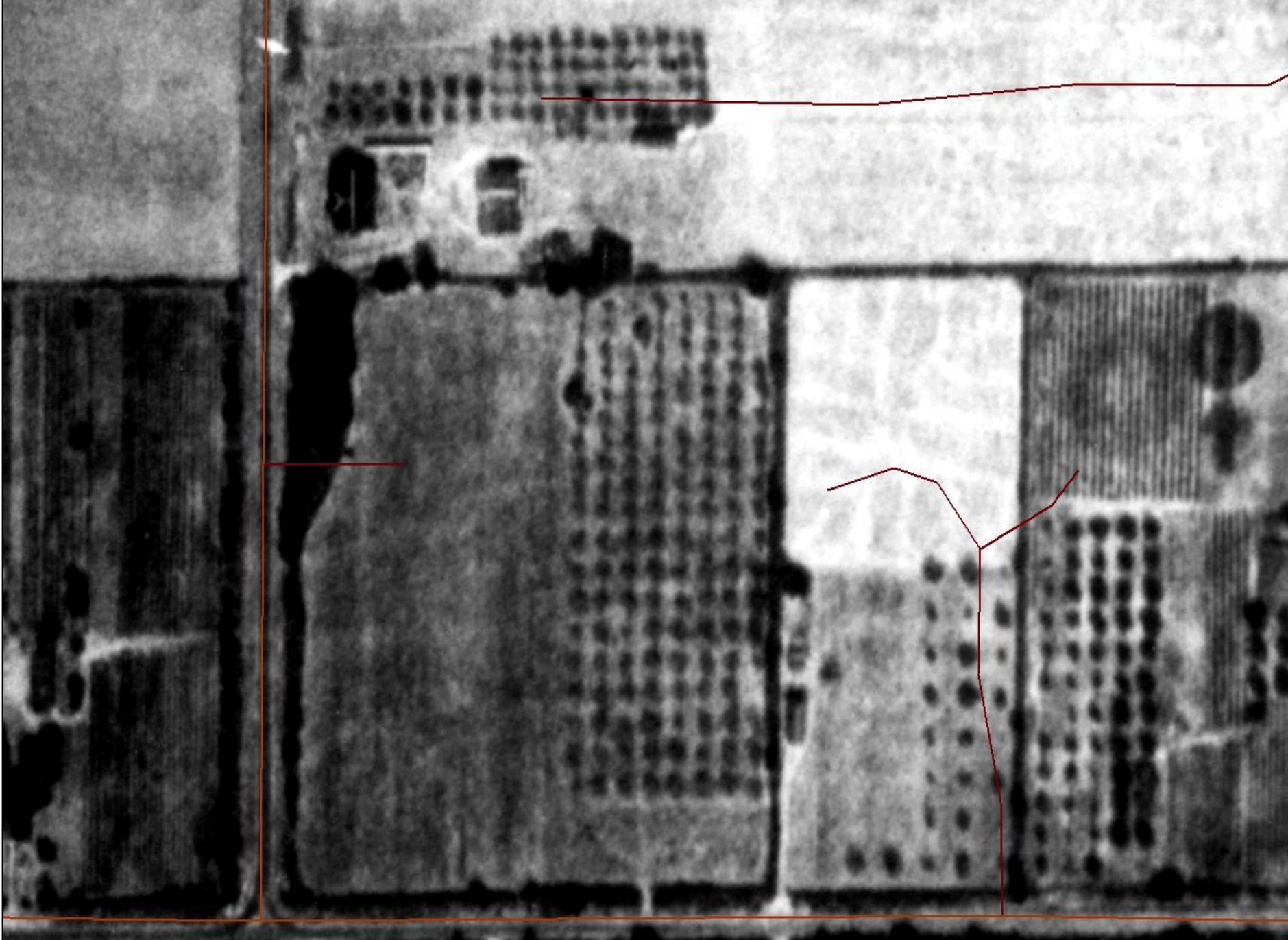
Shelbourne Valley from Mt.Tolmie (1908)  
Saanich Archives *Photo 1989-008-175*



Mt. Tolmie

A227-70 (1928)

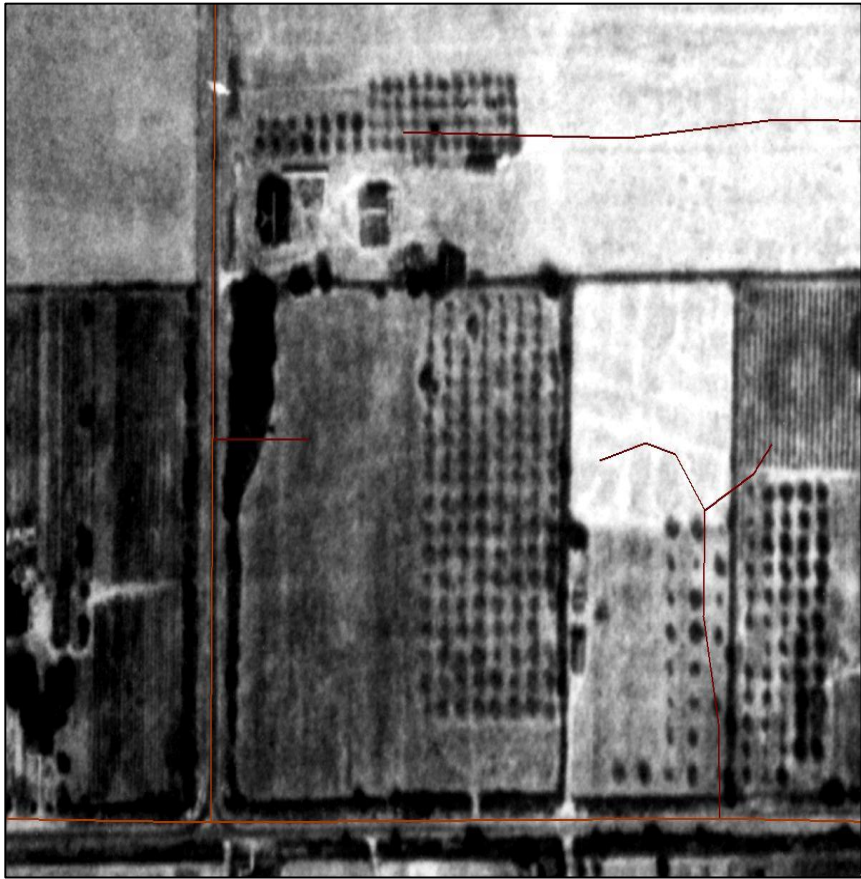
"...near human occupancy..."  
*Aerial Photography and Image Interpretation*  
(Paine & Kiser, 2012)





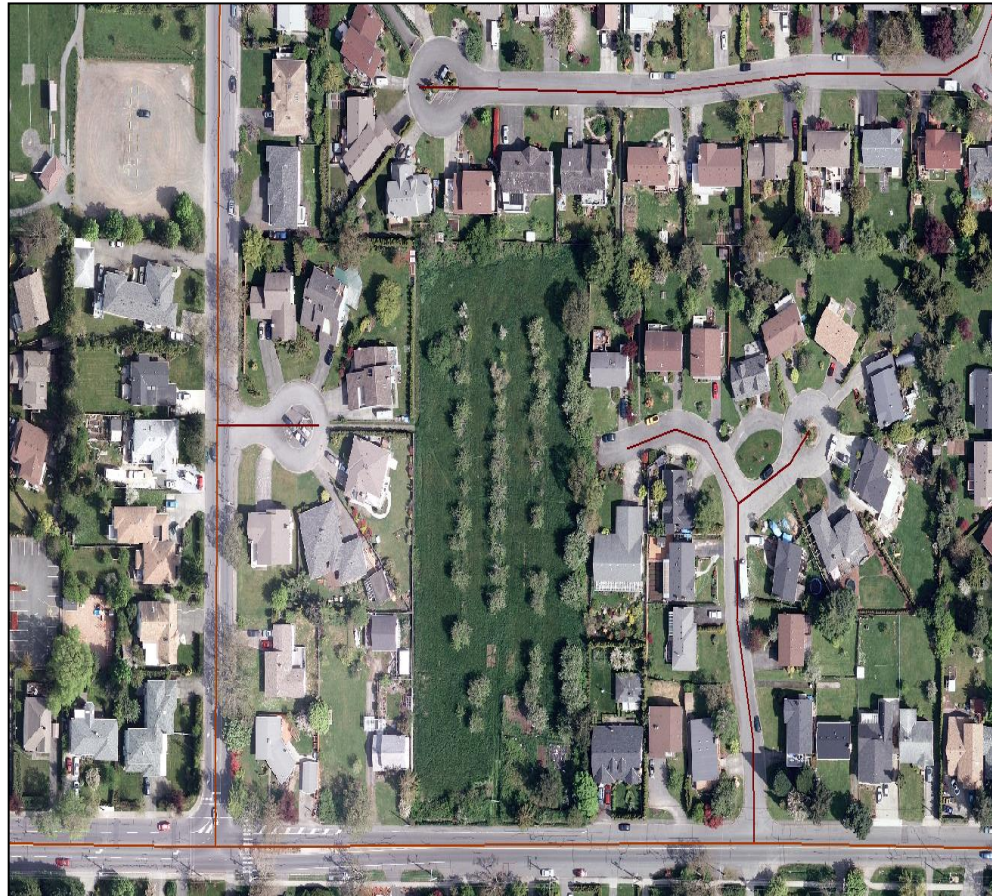




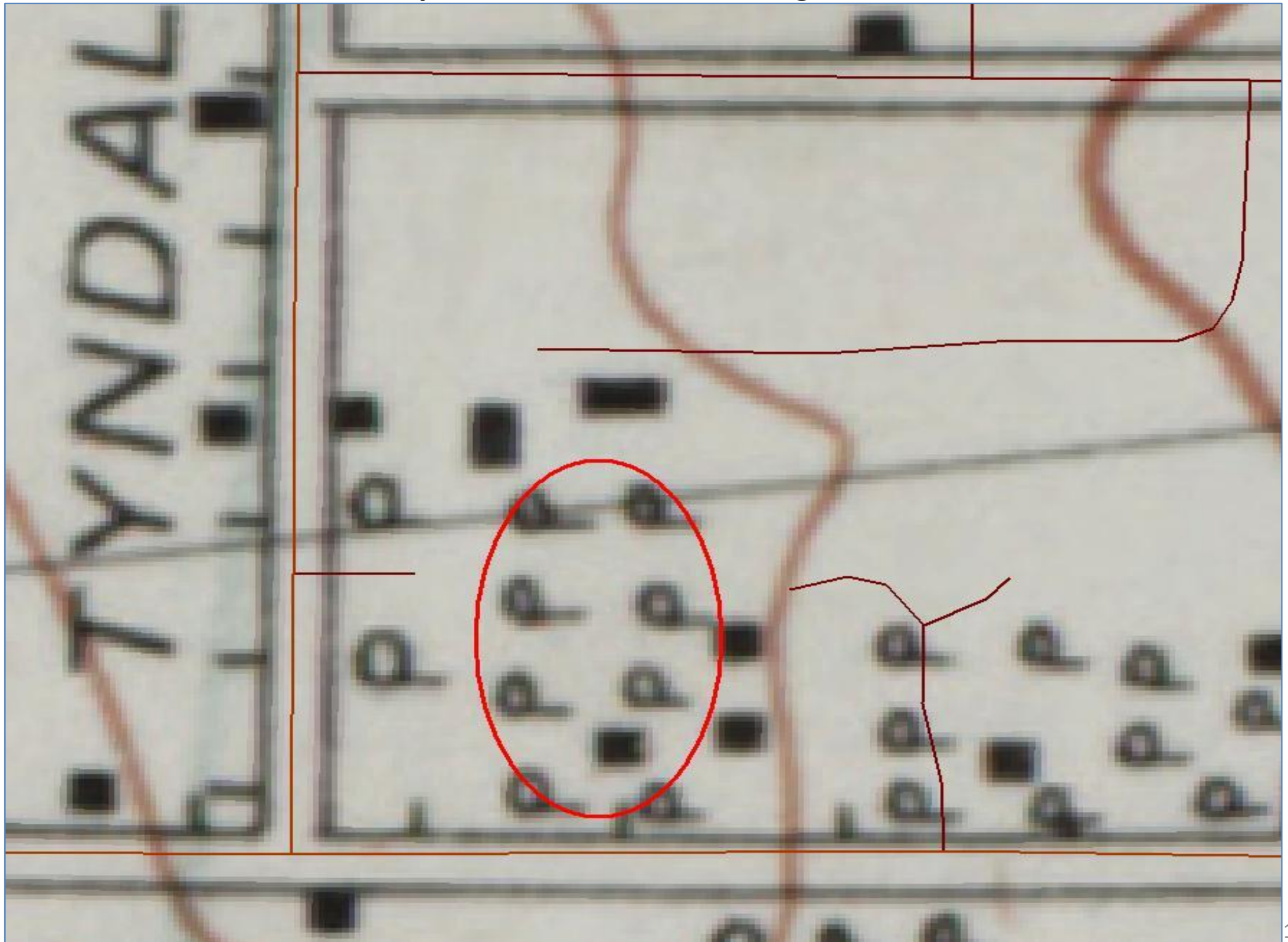


**BA24-37**

## **Gordonhead, Saanich neighbourhood**

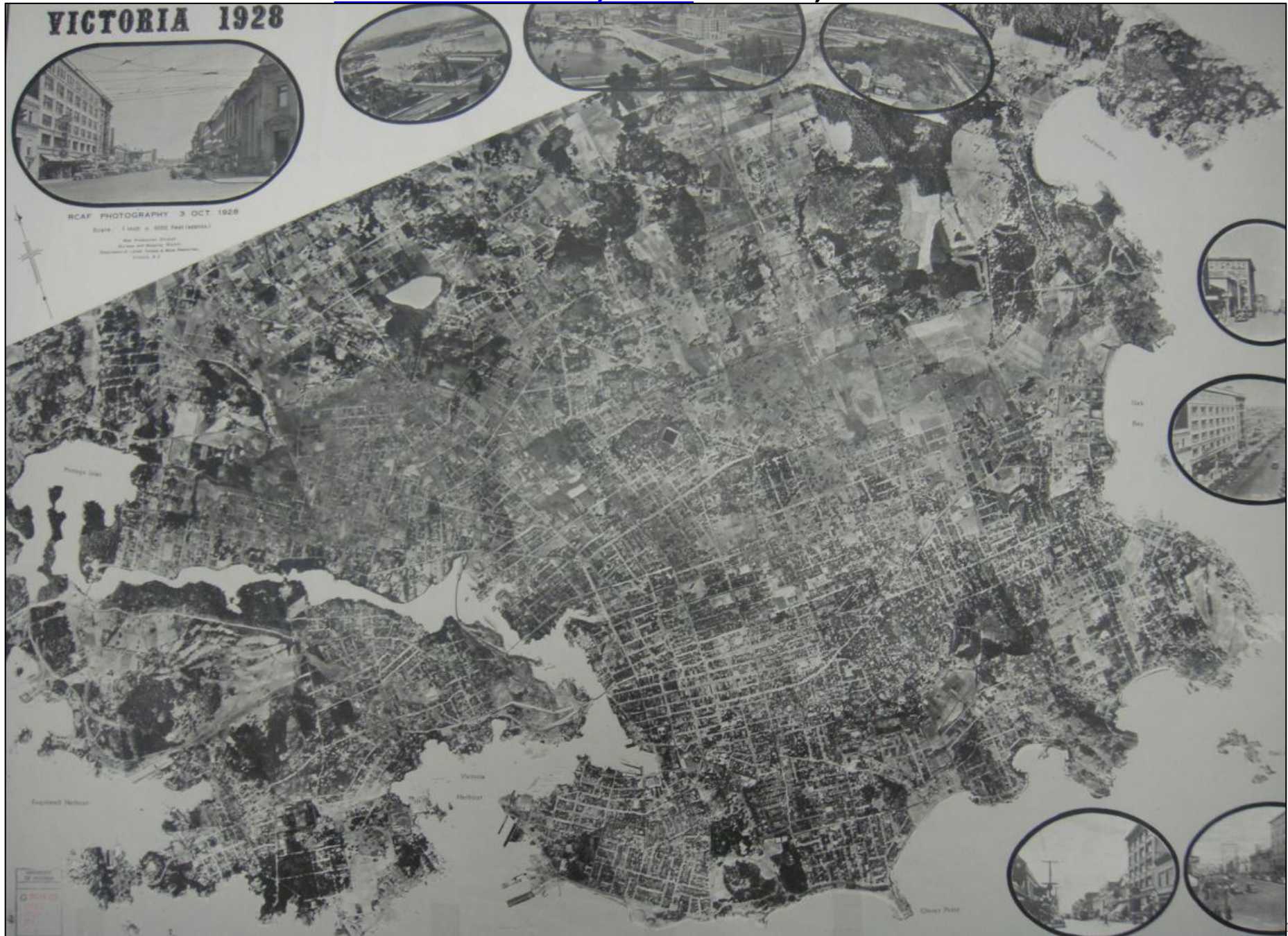


1934 map Gordonhead, Saanich neighbourhood





# Mosaic of Victoria, 1928 but 1:12,000 scale





# National Earth Observation Data Framework Catalogue

**Keyboard users:** Use the arrow keys to move the map and use plus and minus to zoom.



[Search results](#)

500 results from a total of 500 returns

Aerial Photo

**Save results**

Footprint on the map	Date Acquired	Roll Number	Photo Number	Spectral Range	Scale	Metadata	Zoom on map	Order	Info
<input checked="" type="checkbox"/>	1926-08-23	BA27	37	Black&White	9000	<a href="#">See Meta</a>		<input type="checkbox"/>	?
<input type="checkbox"/>	1926-08-23	BA27	36	Black&White	9000	<a href="#">See Meta</a>		<input type="checkbox"/>	?
<input type="checkbox"/>	1926-08-23	BA27	35	Black&White	9000	<a href="#">See Meta</a>		<input type="checkbox"/>	?

Individual airphotos are at 1:8000 and 1:9000





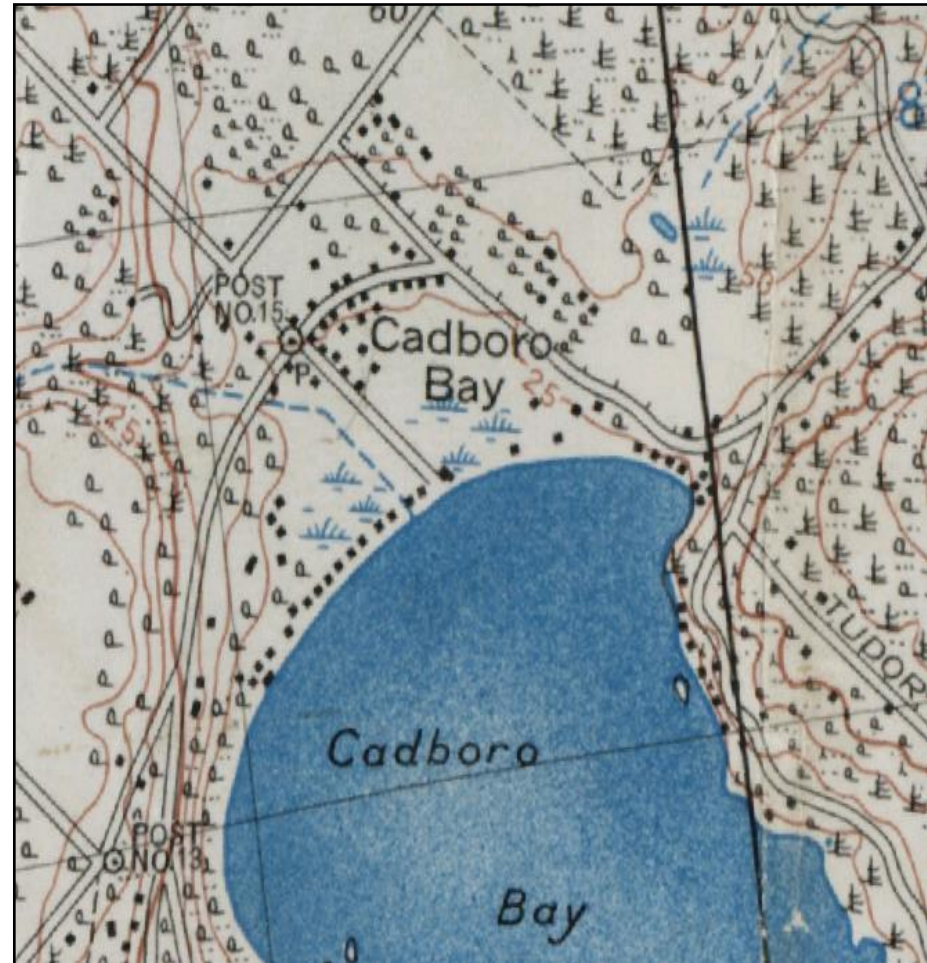


# How? Hundreds of aerial photos: 1926 and 1928



A227-65 1928

1934 map





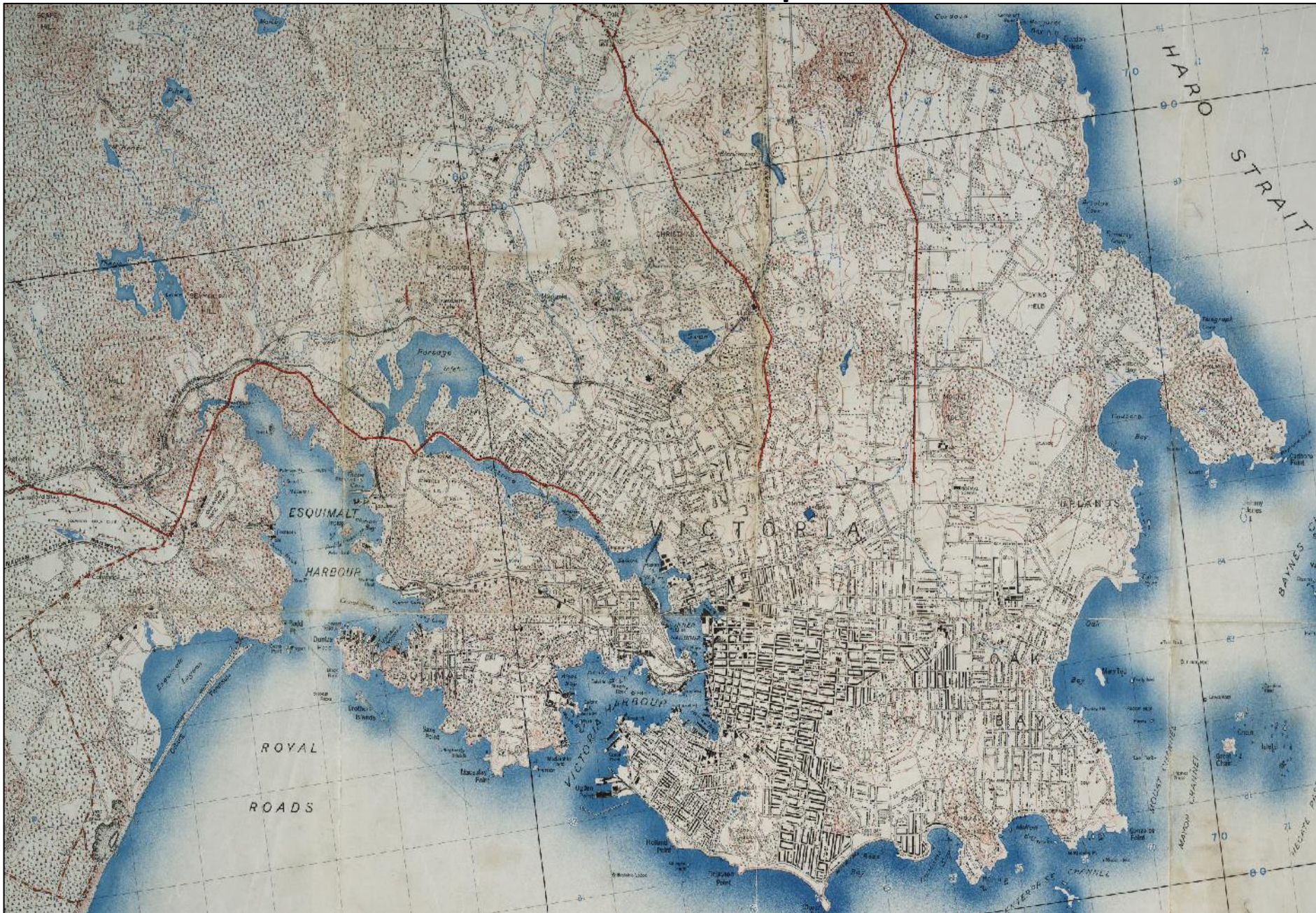
BA25-48 1926

1934 map





# 1934 Victoria map





# geo-reference 1934 Victoria map to current road/street network





# geo-reference airphotos to current road/street network & 1934 Victoria map





some fieldwork



A229-24, 1928





## **Make public?**

**At minimum,**

**want users to be able to click on / off layers of the:**

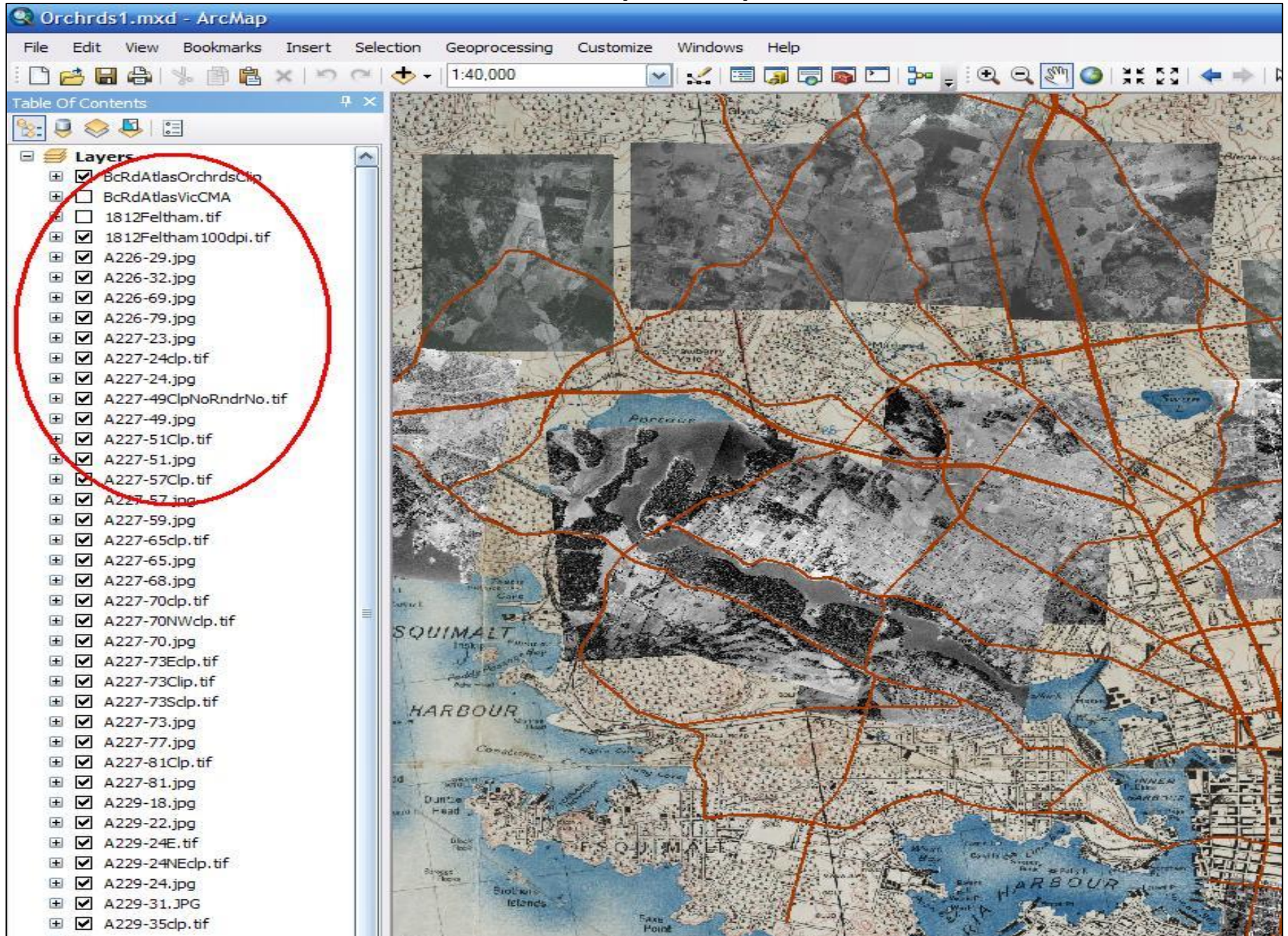
**- historic air photos**

**- 1934 Victoria map**

**- current roads / streets**



# ArcMap desktop



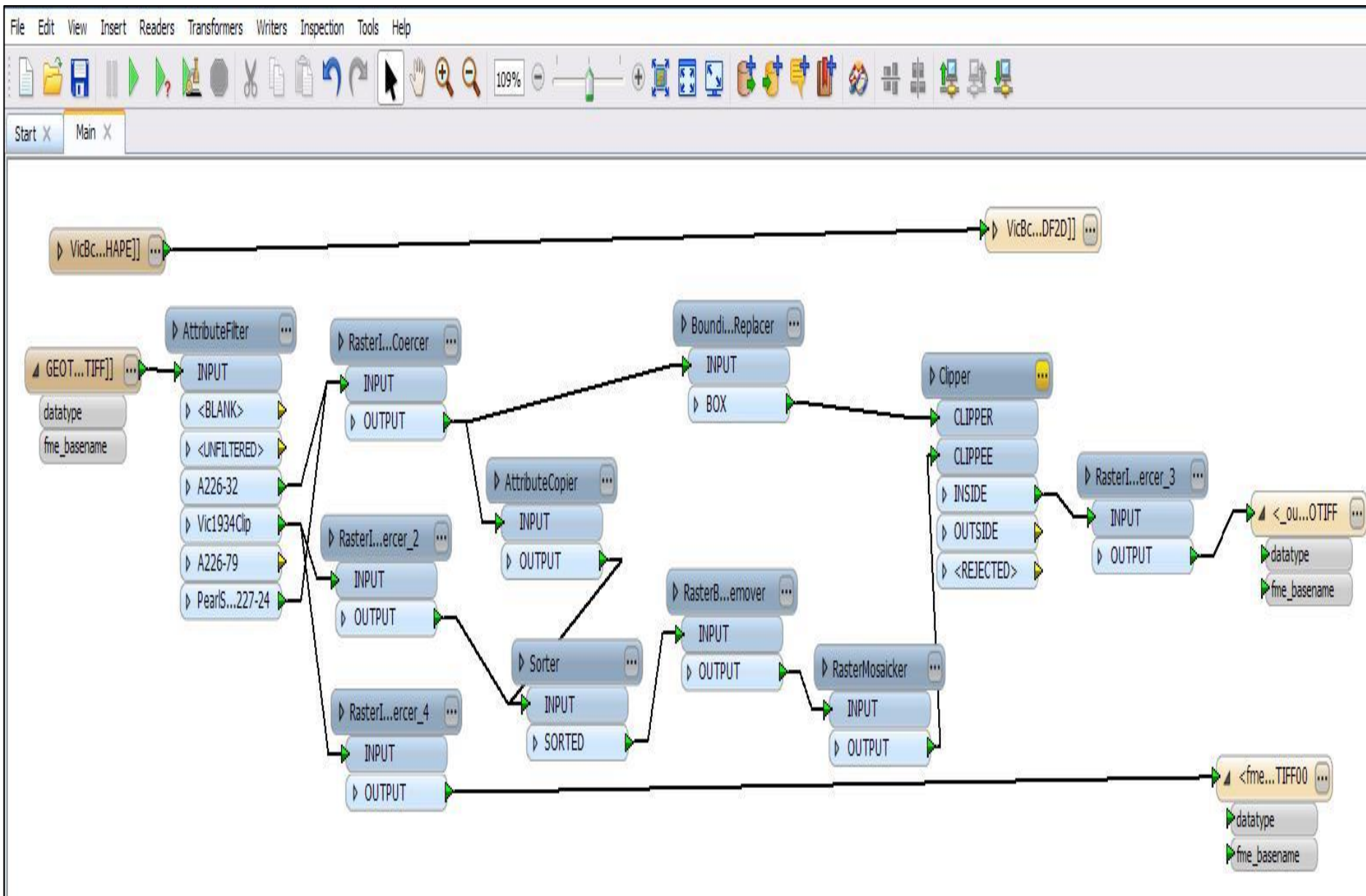


## Make public: How?

- **ArcGIS On-Line (currently) does not support raster files**
  - **GeoCommons (currently) does not support raster files**
- **QGIS-Cloud (currently) does not support raster files**
- **generate .pdf from ArcGIS or QGIS but both...**
  - **“flatten” 2 or more raster layers into one inseparable layer**
- **Adobe Illustrator (to generate a .pdf)**
  - **does not support geo-ref'd files**
- **MAPublisher (Avenza): plug-in for AI**
  - **cannot delete / eliminate “no data” area of geo-ref'd raster file**
  - **need to clip raster inside of “no data”**
  - **\$800 year single license**



# Safe FME translator(s) (Feature Manipulation Engine)



...but still “just” produces a .pdf



## Make public: How?

### on-line webmap service(s)

- **CartoDB**
  - 5 mb (not enough space!) free
  - 50 mb \$30/month
  - 100 mb \$50/month
  
- **GIS-Cloud**
  - “special” of \$100/month
  - 60% off for lifetime subscription...going....gone??







## *Canada Census of Agriculture*

**1921: only Victoria recorded:**

**153 acres of farm land (3%) in city of 4800 acres**

**no mention of Orchards; small Fruit: 5 acres**

**1931: Esquimalt, Oak Bay, Saanich (Victoria City is no longer recorded)**

**Orchard and Vineyards: 719 acres**

**1941: Esquimalt, Oak Bay, Saanich**

**Orchard and Vineyards: 234 acres: 67% decrease from 1931**

**1951: only Central Saanich and Saanich recorded**

**Tree Fruits: 12 acres**

**1961: 11 acres**

but...

terminology changes

and

incorporated (geographic) areas are added / changed



**A226-62 Fernwood, 1928**





## *Canada Census of Agriculture*

**2001: Capital Region District (CRD): apples, apricots, cherries, peaches, plums  
120 acres (producing and non-producing)**

**2011: Capital Region District (CRD): apples, apricots, cherries, peaches, plums  
346 acres (producing and non-producing)  
65% increase from 2001**



Remember UVic lands...



UVic CJVI lands (dog park)





**...limitations of using earliest air photos**



**UVic CJVI farm land: *BC2042-55*, 1956**

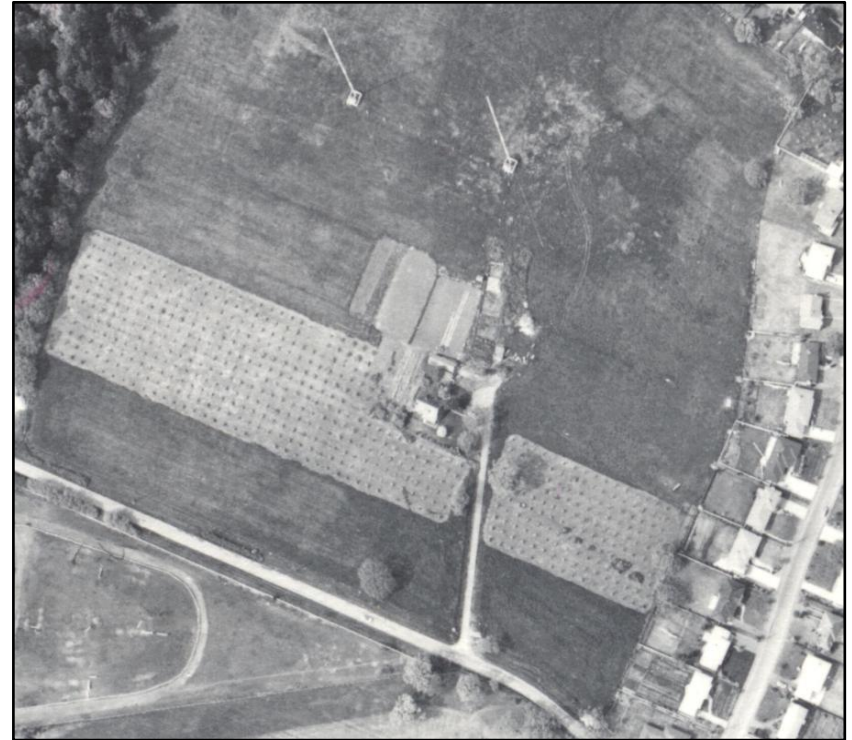
**no orchard yet in 1956**



**UVic CJNI farm land: BC5091-266, 1964**



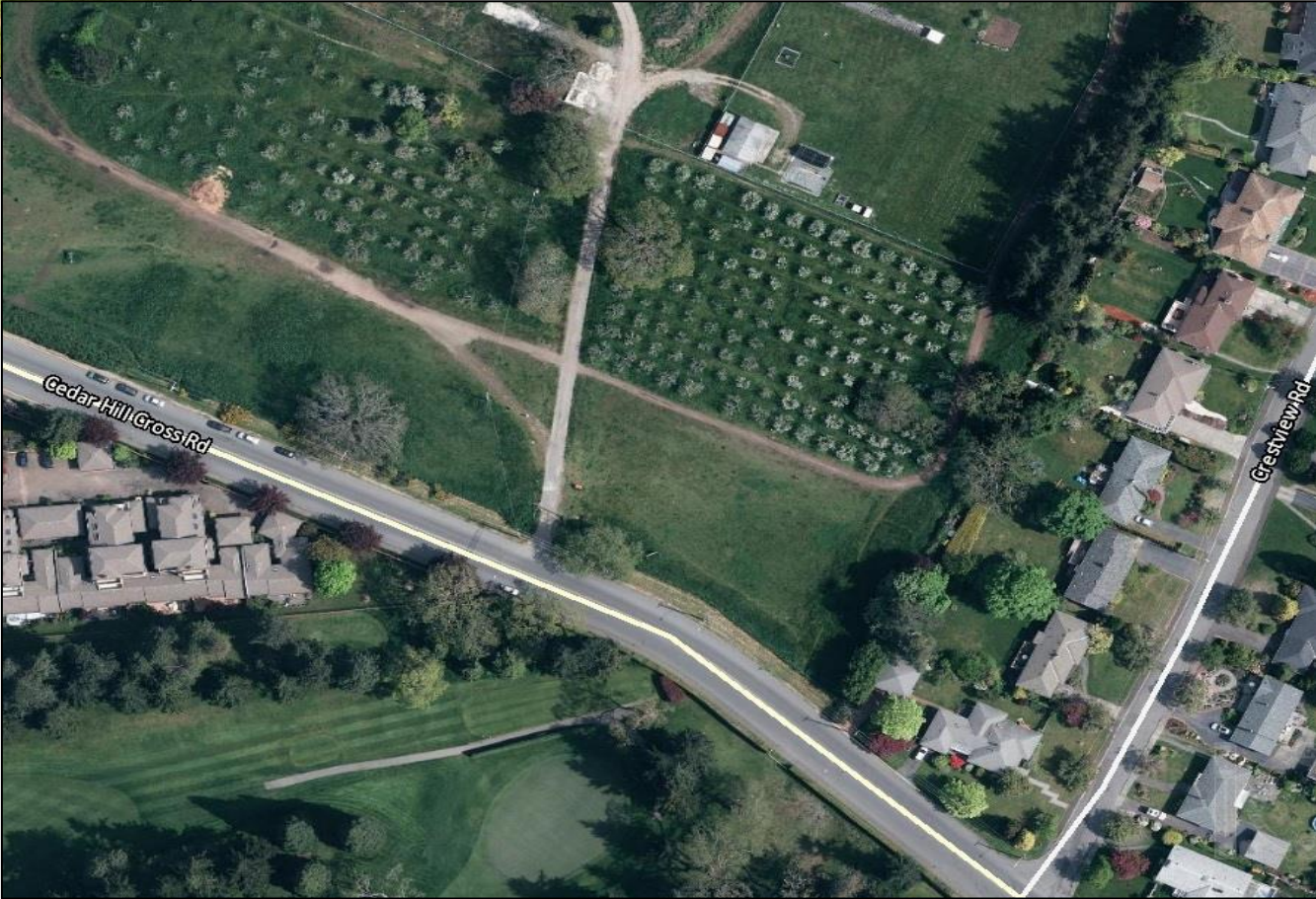
**orchard planted between 1956 & 1964**



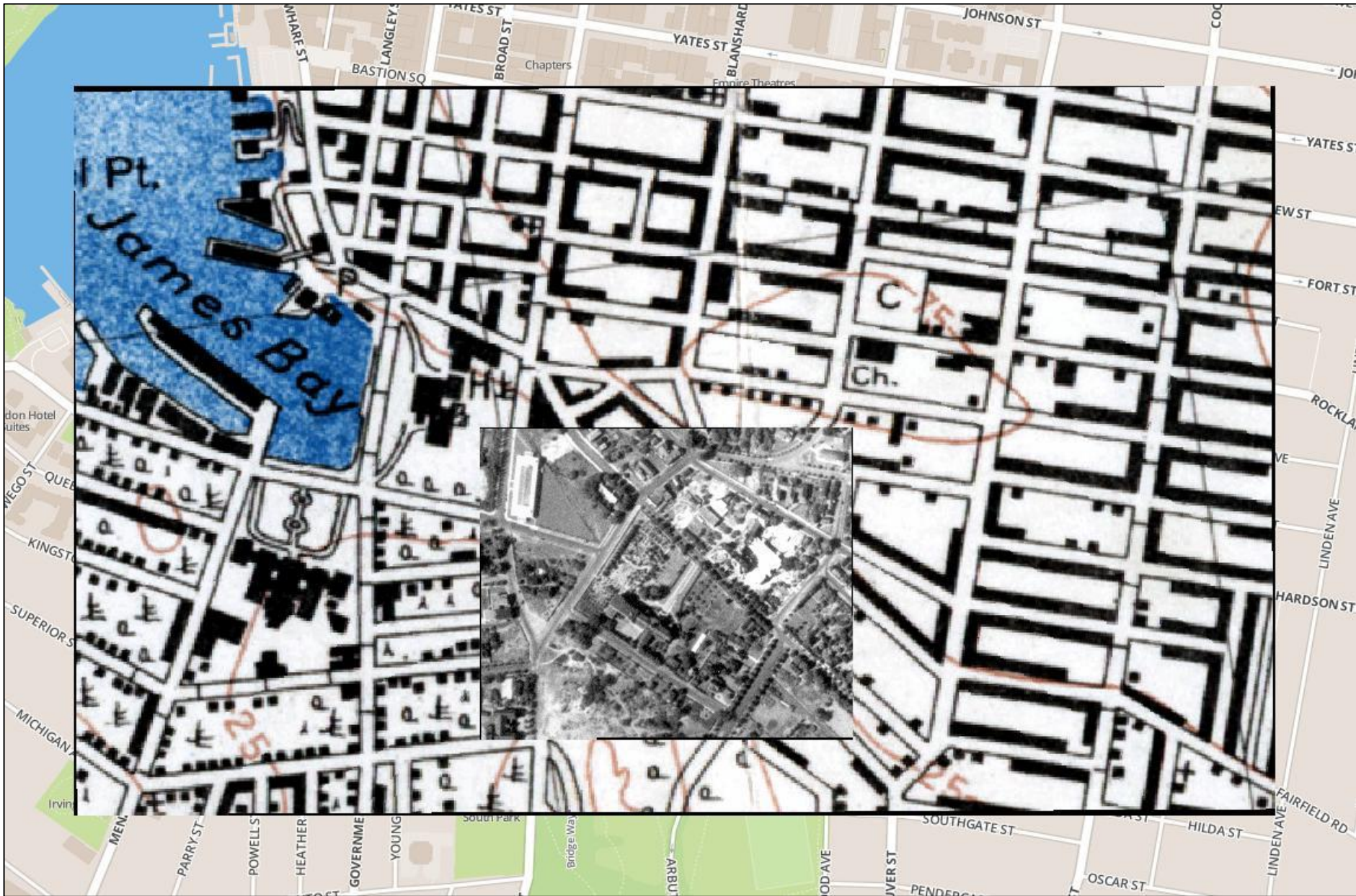




UVic CJNI lands (dog park)







**must use these browsers: Firefox, GoogleChrome, IE10+, Safari**



# community partnership?



Home	Initiatives	Resources	Get Involved	About Us	Contact Us
------	-------------	-----------	--------------	----------	------------

[Home](#) - [Initiatives](#) - [Fruit Tree Project](#)

## LifeCycles Fruit Tree Project

Thanks to hundreds of volunteers and a couple of ladders, the Fruit Tree Project harvests apples, cherries, pears, and other fruit from privately owned trees that would otherwise go to waste. We then share the harvest among homeowners, volunteers, food banks, and community organizations within Victoria. A unique aspect of this project is that a portion of the harvest is set aside to make value-added products that help defray our costs.

Last season our fantastic volunteers and tree owners made it possible for us to collect and redistribute over 39,000 lbs of fruit that would have otherwise gone to waste.

Another season is upon us! Please join us again



NewsLetter Signup

Subscribe



Register

Your Trees

If you are a **TREE OWNER** with fruit to share, please use our [online form](#) to register your fruit tree(s) for picking from July 1 until October 31.

PLEASE NOTE: We do our very best to accommodate and meet everyone's needs but are not always able to pick every single tree. We will call homeowners to confirm our arrival time if and when a picking team has been arranged to pick your fruit. Thank you for your patience and support for this important and innovative project!

Volunteer

For Picks

If you are a **VOLUNTEER** with a few hours a week to spare between July and the end of October, we will need Fruit Pickers (lots) , Tree Assessors, and Office Volunteers (4 max.).

**New volunteers:** Use our [online form](#) to sign up.  
**Registered volunteers:** [Sign up](#) for Picks





**“Place...is sustained...by the quality of human awareness.”**



**Yi-Fu Tan, 1975. Place: An Experiential Perspective. *Geographical Review* 65(2)**



## Selected References

Barnett, C. 1995. Awakening the dead: who needs the history of geography? *Transactions of the Institute of British Geographers* 20 (4).

Gerard, F. et al. 2010. Land cover change in Europe between 1950 and 2000 determined employing aerial photography. *Progress in Physical Geography* 34 (2).

Lowenthal, D. 1975. Past time, present place: Landscape and memory. *The Geographical Review* LXV(1).

Paine, D.P. & Kiser, J.D. 2012. *Aerial photography and image interpretation*, 3<sup>rd</sup> ed. Wiley: Hoboken, NJ.

Pretty, J. 2002. *Agri-Culture: reconnecting people, land, and nature*. Earthscan, London.

Winter, M. 2003. Geographies of food: Agro-food geographies—making reconnections. *Progress in Human Geography* 27(4).

Yi-Fu Tan. 1975. Place: An Experiential Perspective. *Geographical Review* 65(2).