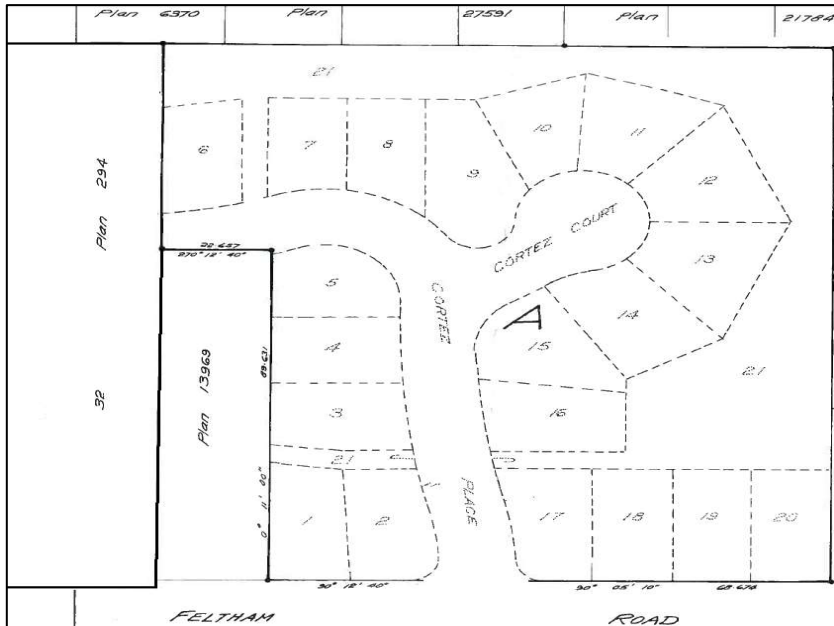
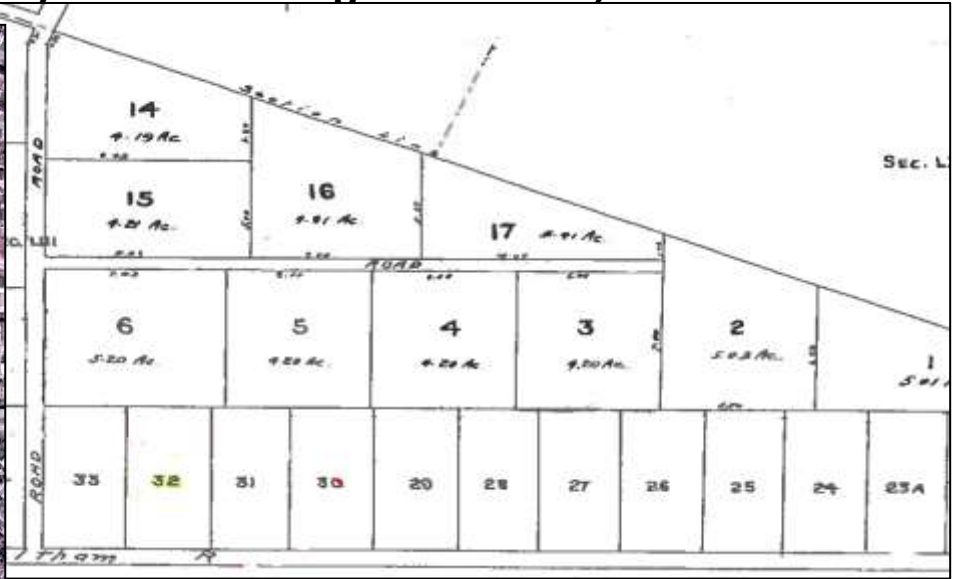


Fading away: (Agricultural) land use change in Victoria, BC



OR

An Anti-Fading away technique: Web map(s) to highlight map collection?

20 yards diet: (Remnant) orchards in Victoria, BC



Introduction

- **Why?**
 - last year's project was "unfinished" and "only" displayed then & now

- **What? / How?**
 - show change over time
 - highlight map library collection

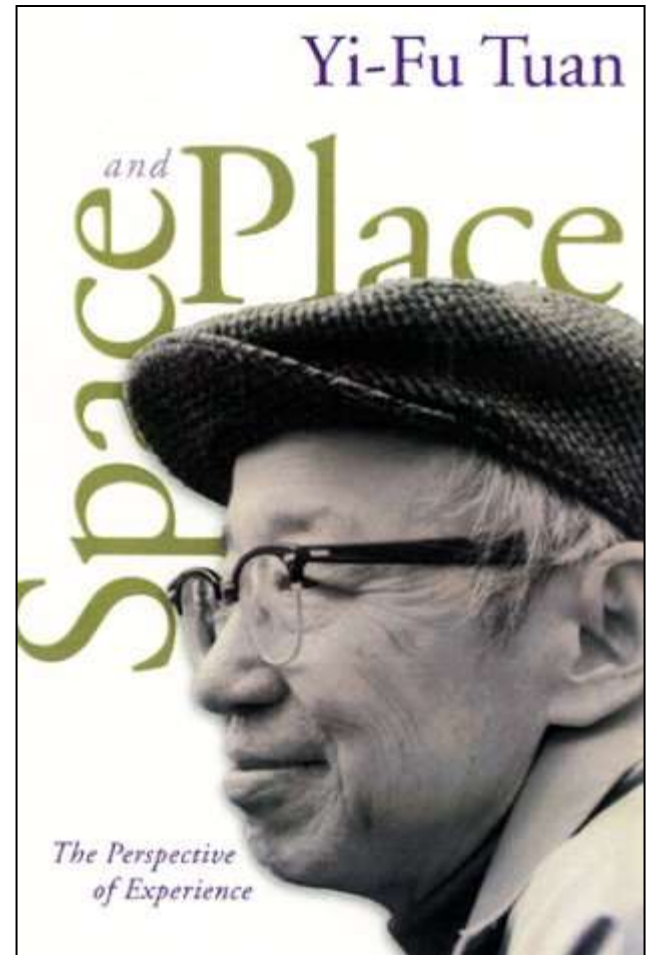
- **Lessons learned**

- **Future?**

Why?

**“To know a place is also to know the past.
Place...is the past and the present...”**

Yi-Fu Tan, 1975. *Place: An Experiential Perspective*.
Geographical Review 65(2)



Why? [Previous presentation/project](#) detailed “only” then (late 1920s) and now





UVic CJVI lands (dog park)



...limitations of using earliest air photos



UVic CJVI farm land: *BC2042-55*, 1956



UVic CJVI farm land: *BC5091-266*, 1964



Why?

- **Change is incremental (usually)**
 - **show change over time**
- **Community / University engagement**
 - **Are paper collections and websites about the collection enough for promotion?**
- **Web map highlights collection**
- **Land “ownership”**
- **historic urban geography**
- **provide sense of past**

How to display change over time



[Touch History](#) YouTube video (1:20 min mark)

(Louis-Pascal Rousseau, McNeil Center for Early American Studies, University of Pennsylvania)

ahhhh; how do they do that?

How to display change over time

- **Can airphotos and maps detail the loss of agricultural land?**
 - **(or any land use change over time?)**

- **What kinds of maps?**
 - **Road / Street (networks)**

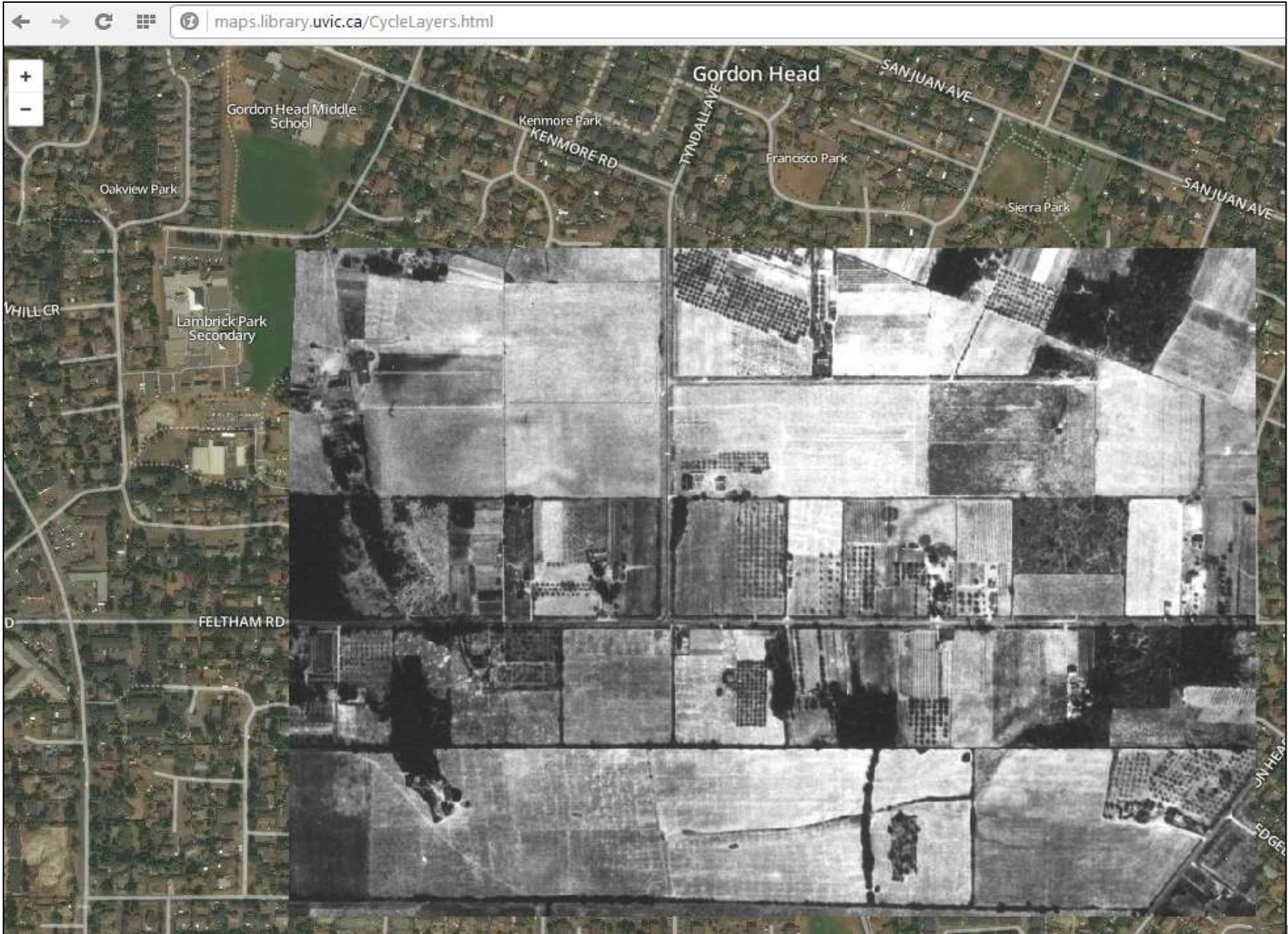
 - **Fire Insurance**

 - **Zoning**

 - **Cadastral (property / land title) plans**

Map Libraries are filled with “change over time”!

area in Saanich, Victoria, BC



BC Cadastral (property / land title) plans

- **Lot**
- **Section**
- **District**
- **etc depending where in the province...**

Maps and land “ownership”

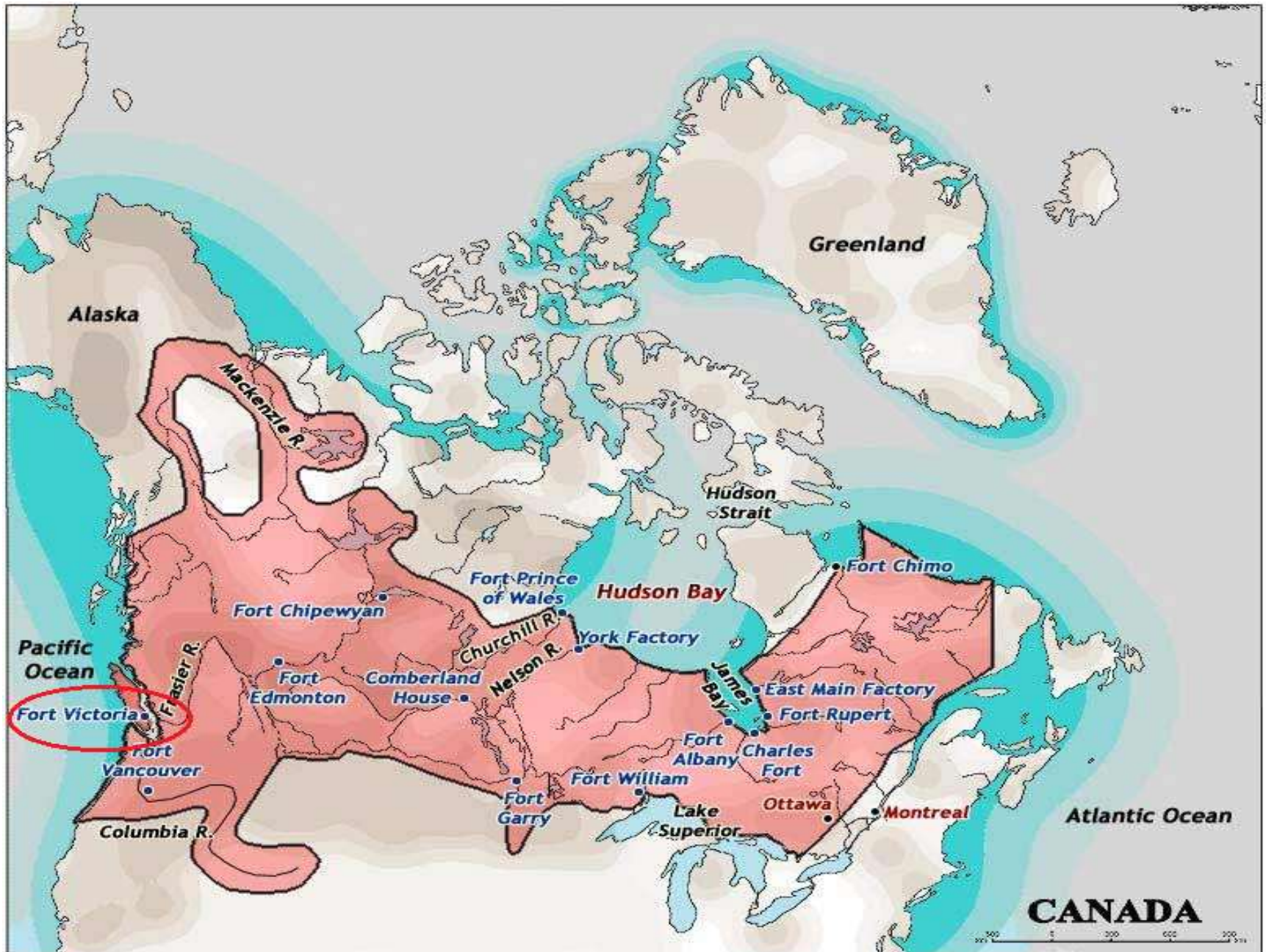
- Who?
- From When to when?

First Peoples "Traditional" Lands



Deborah Reade, Seattle Art Museum

Hudson's Bay Company "administered lands"



James Despard Pemberton, 1821 – 1893



Surveyor: Hudson's Bay Company at Fort Victoria (1851-1859)

Surveyor General: Colony of Vancouver Island (1859-1864)

[part of] South Eastern districts of Vancouver Island, from a trigonometrical survey...(1855)

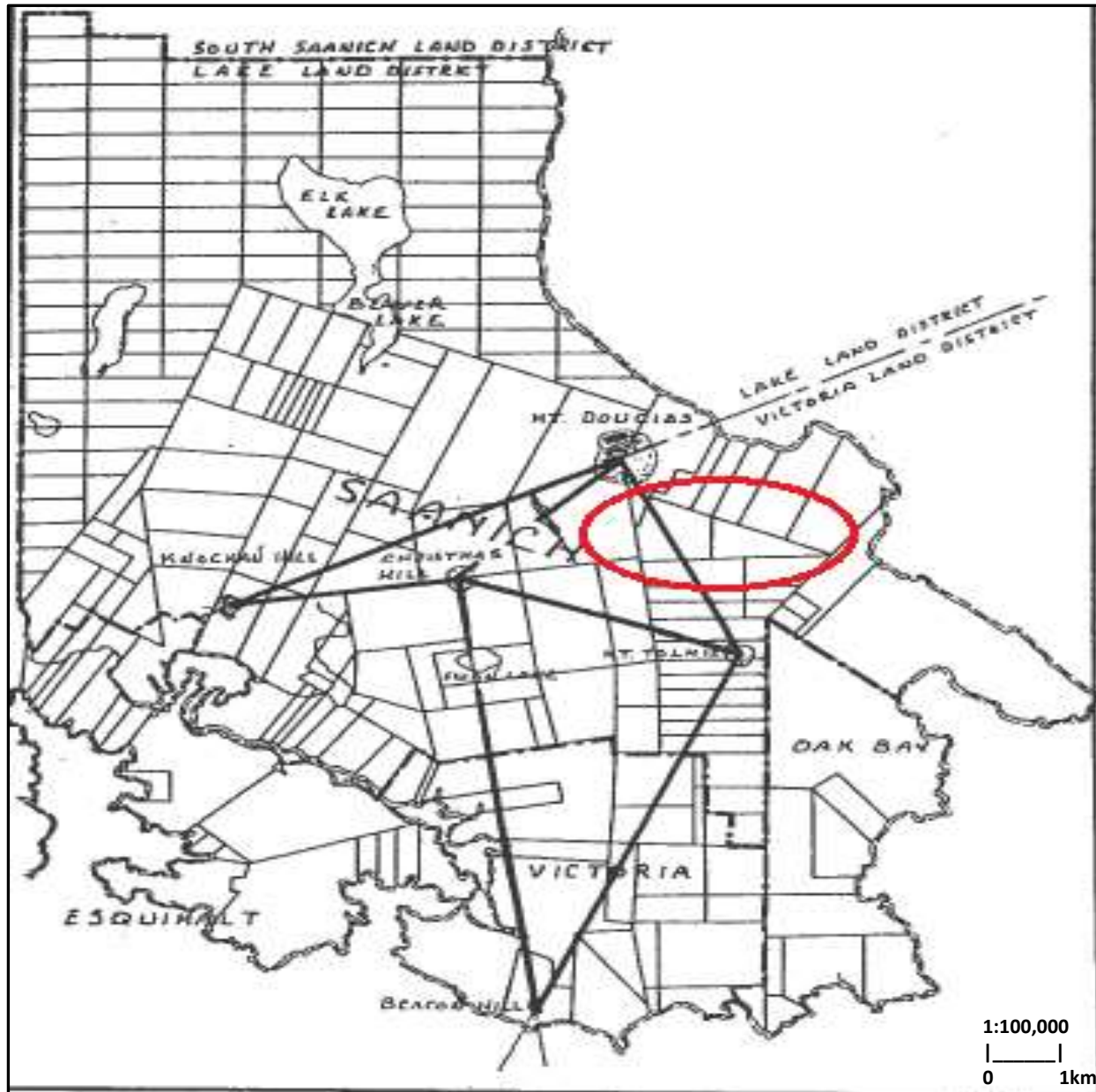


Block / Grid survey for Victoria rejected...



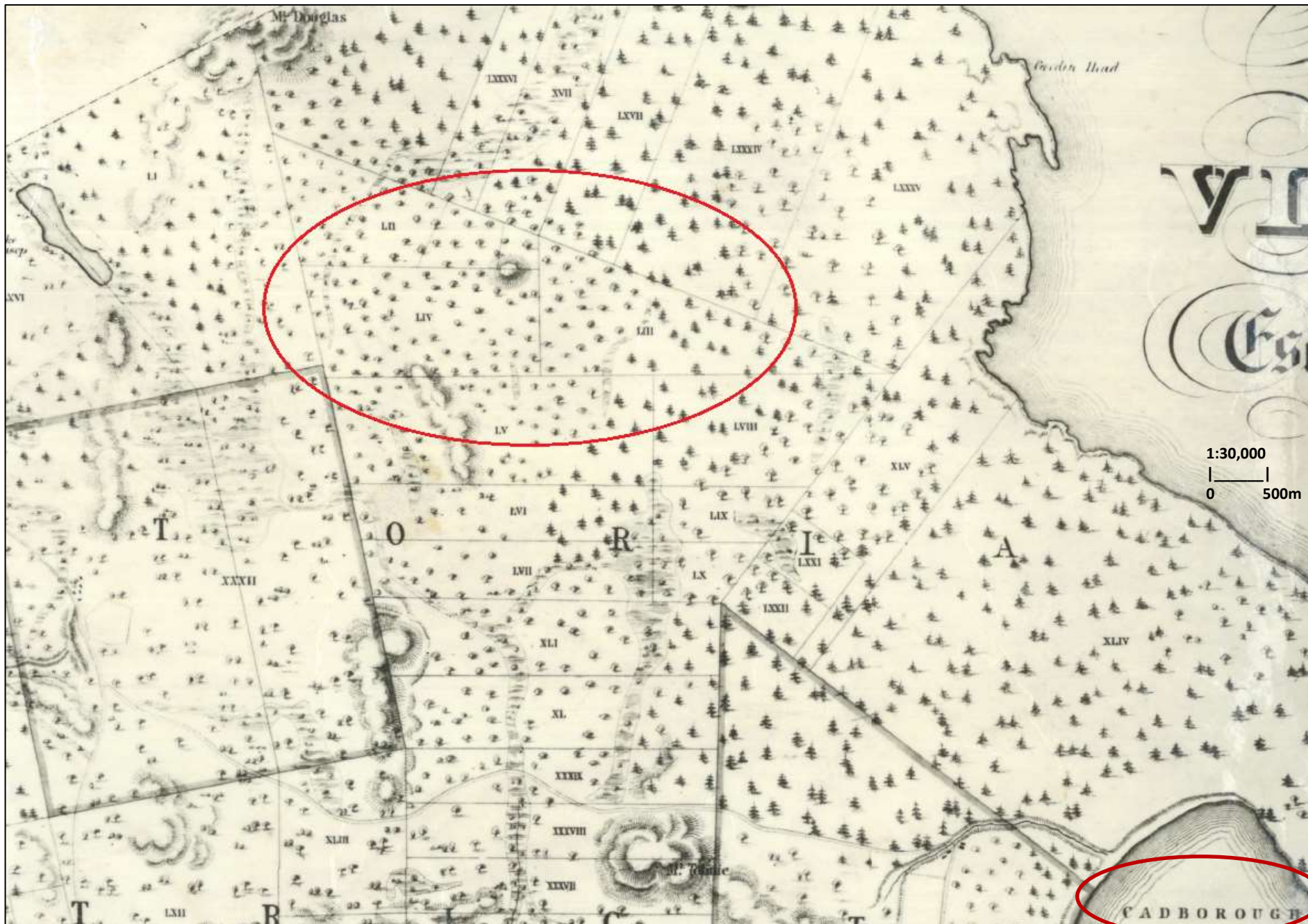
Anonymous. (1850). Hudson's Bay Company Archives.

[reproduction from] J.D. Pemberton notebook *Trigonometl Memda c.185?*

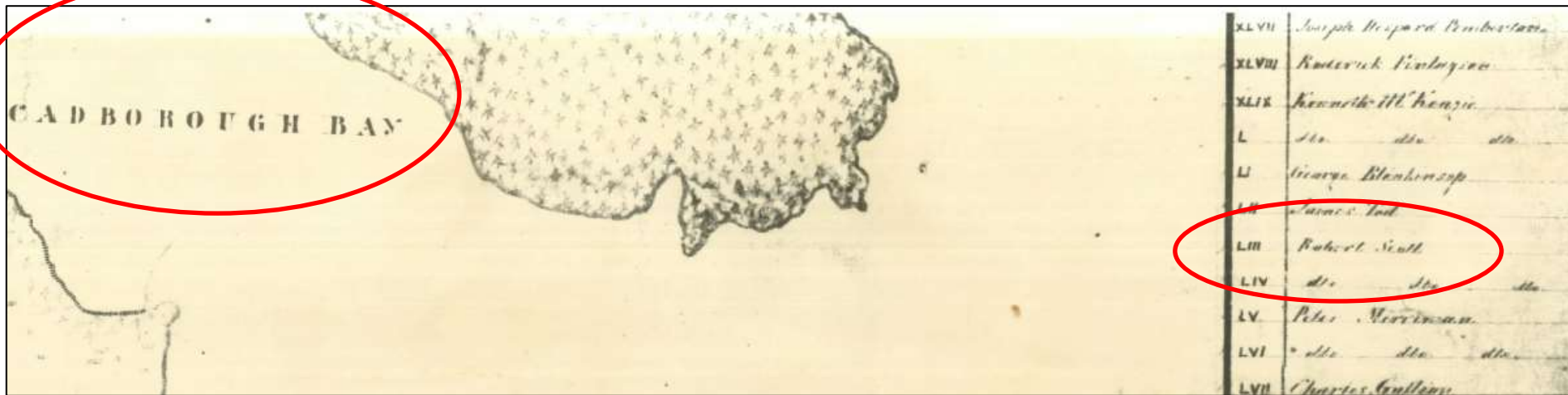


Regan, J.P. (1986). Hudson's Bay Company Lands and Colonial Surveyors on Vancouver Island, 1842-1858. *BC Historical News* 19 (2).

[part of] Map of Victoria...Districts, Sections LIII & LIV, 1861



[section of] Victoria Districts Official Map, 1858



<u>Section</u>	<u>Owner</u>
LIII	Robert Scott
LIV	

Rosemount house, Robert (Bob) Scott, c.189?

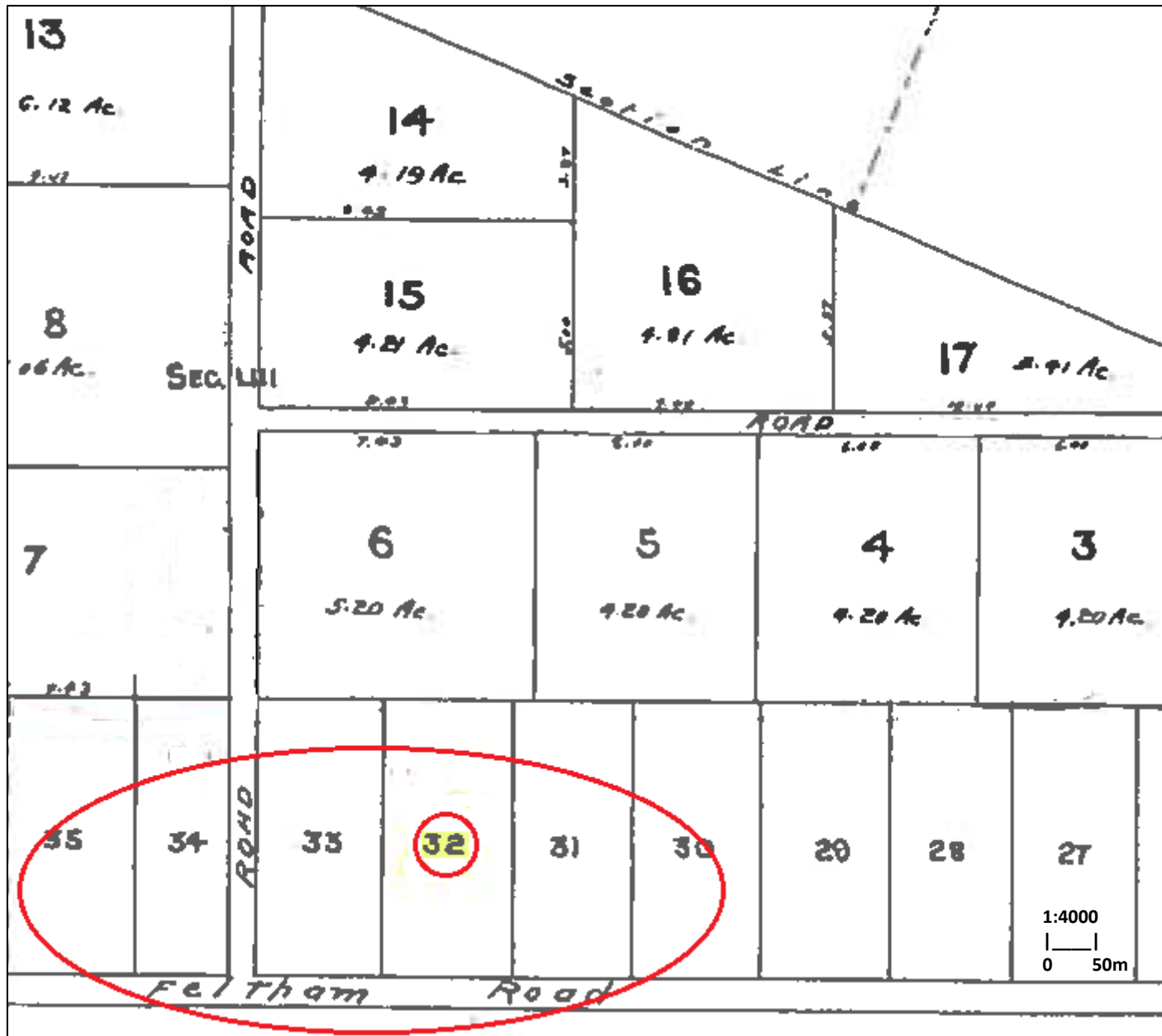


Saanich Archives # 2011-024-097

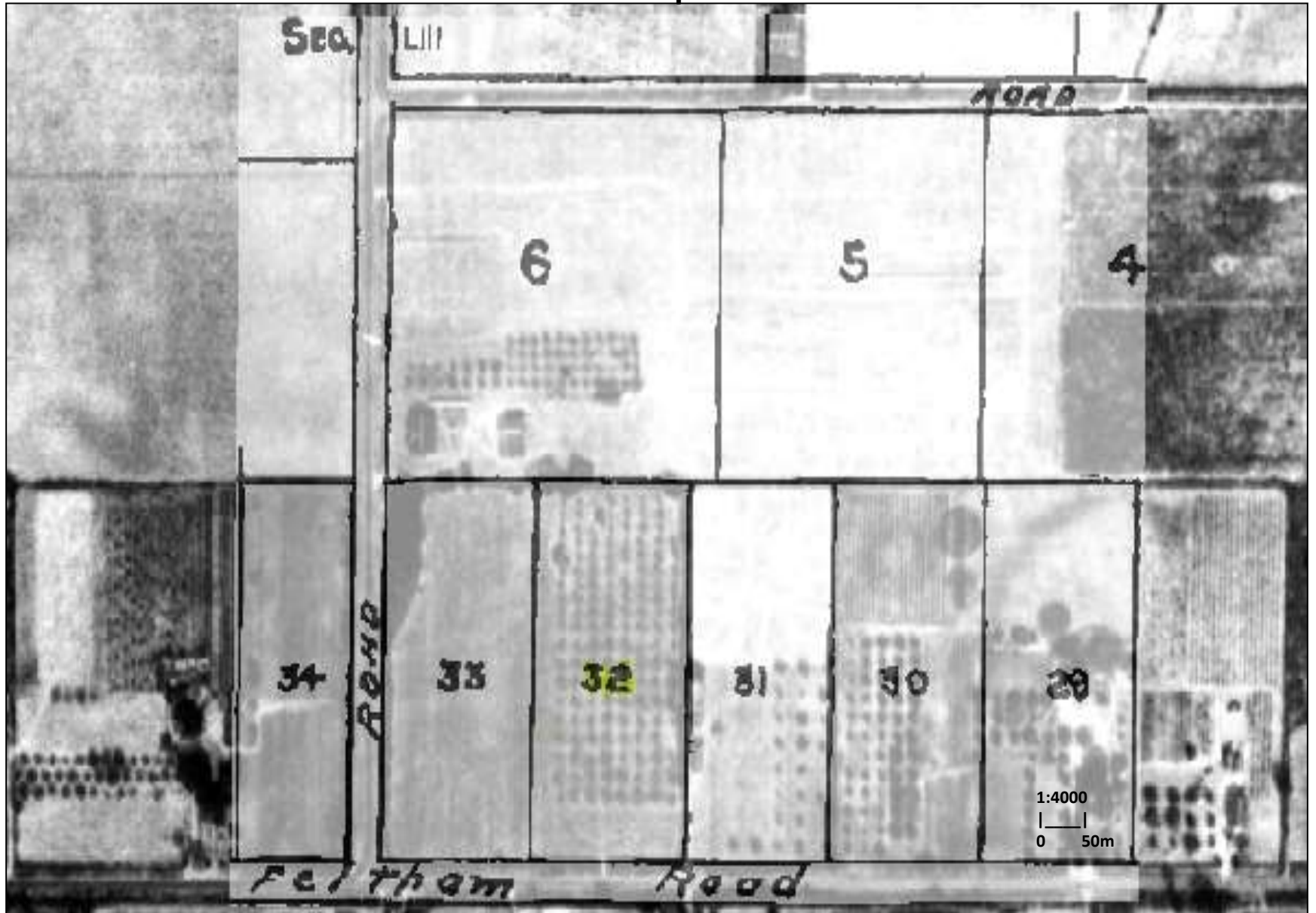
[part of] Map of the South-eastern Districts of Vancouver Island, B.C. 1880



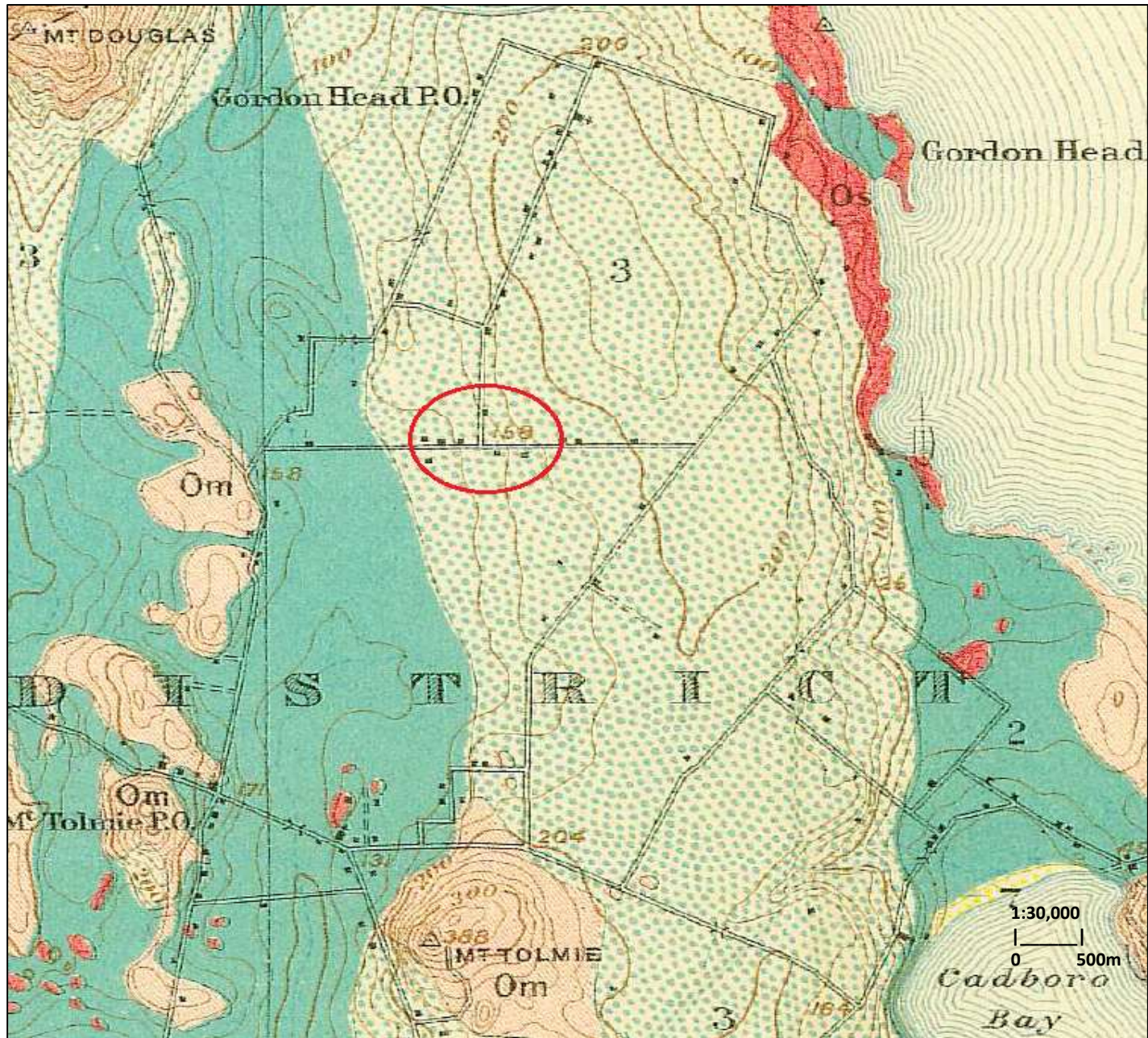
[part of] Plan [868] showing subdivision of part of Sec.53..., 1907



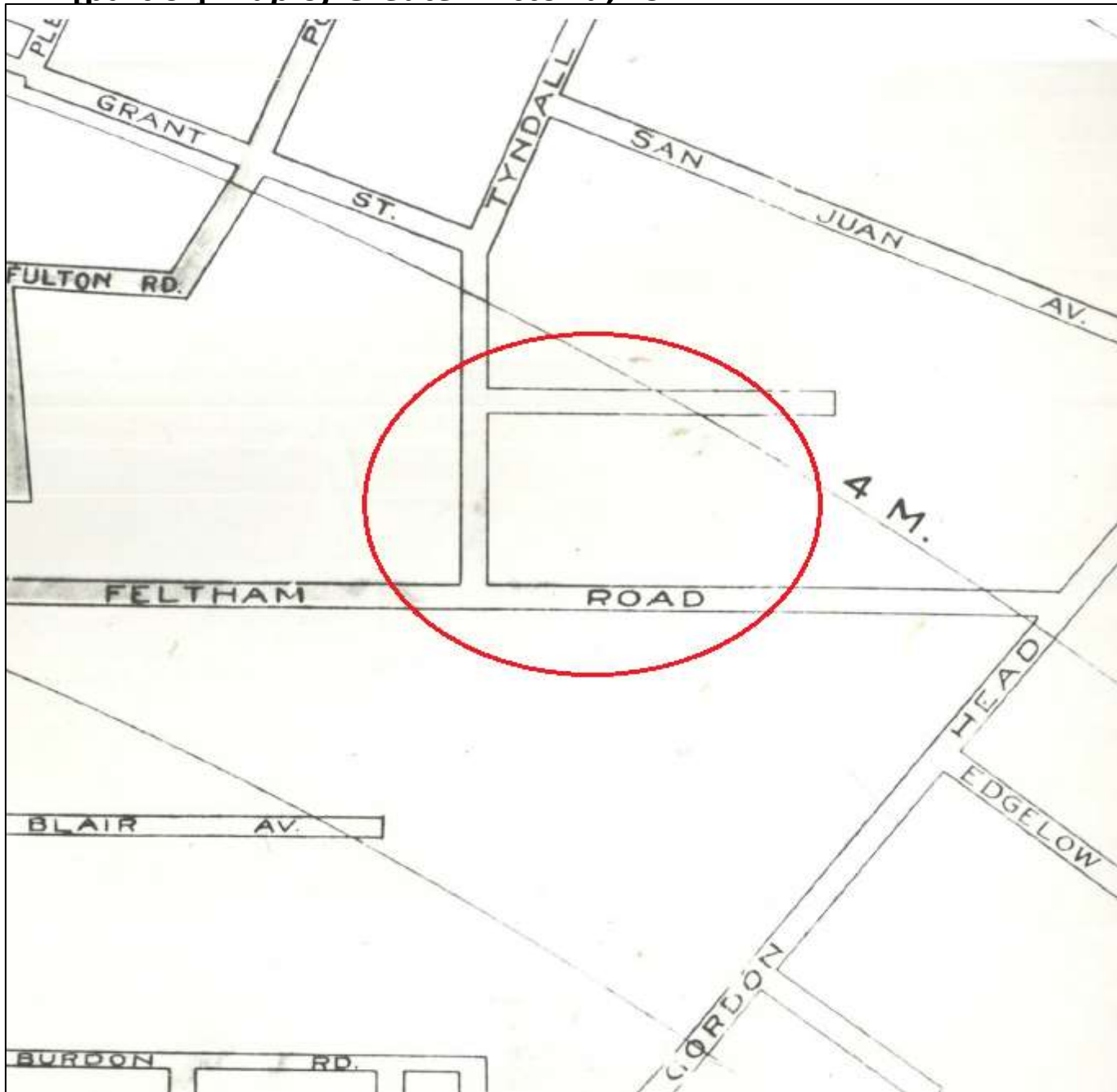
[part of] *Plan [868] showing subdivision of part of Sec.53..., 1907*
over 1926 airphoto BA24-37



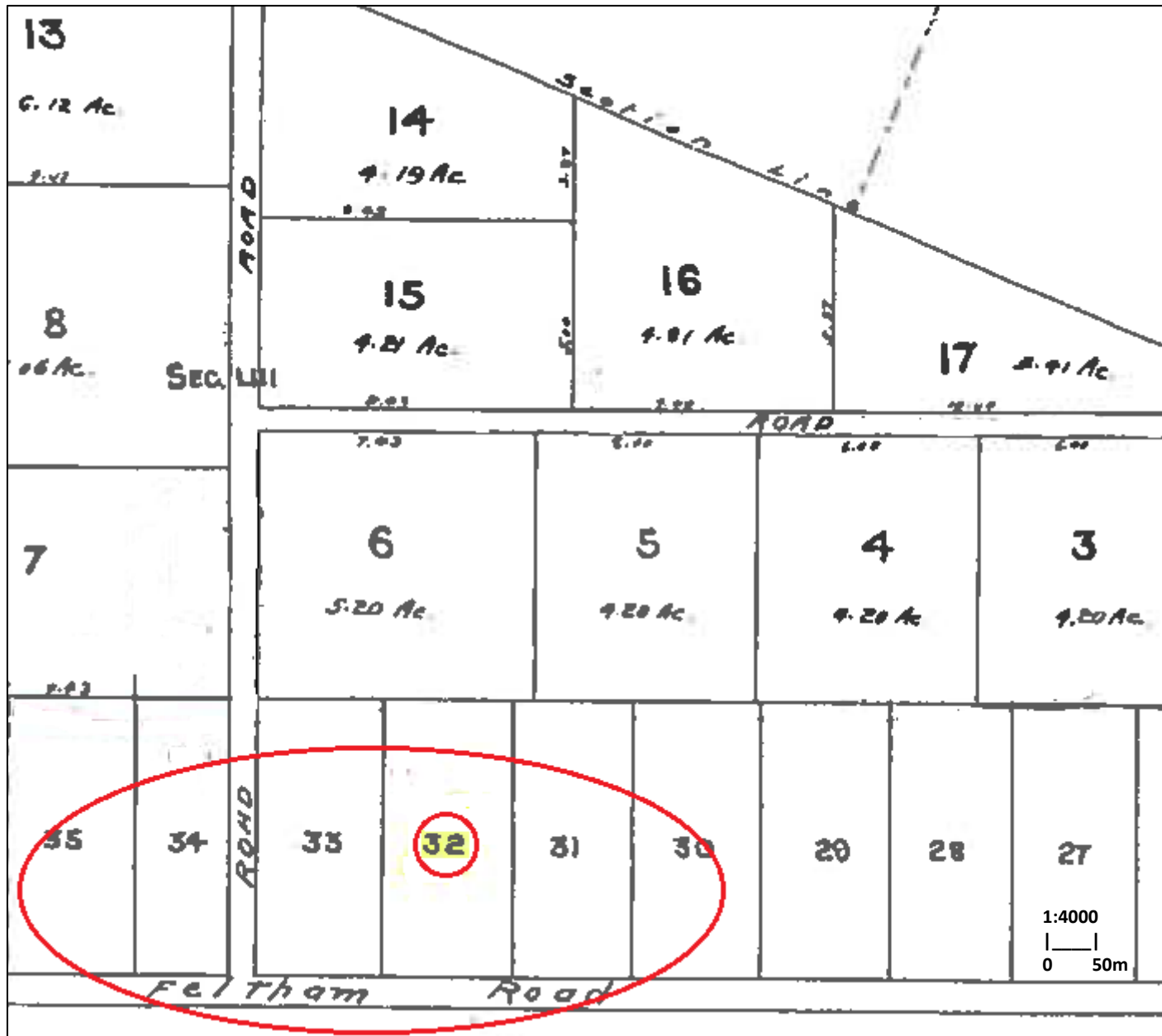
[part of] Geological Survey of Canada *Map 20A, 1911*



[part of] *Map of Greater Victoria, 1921*

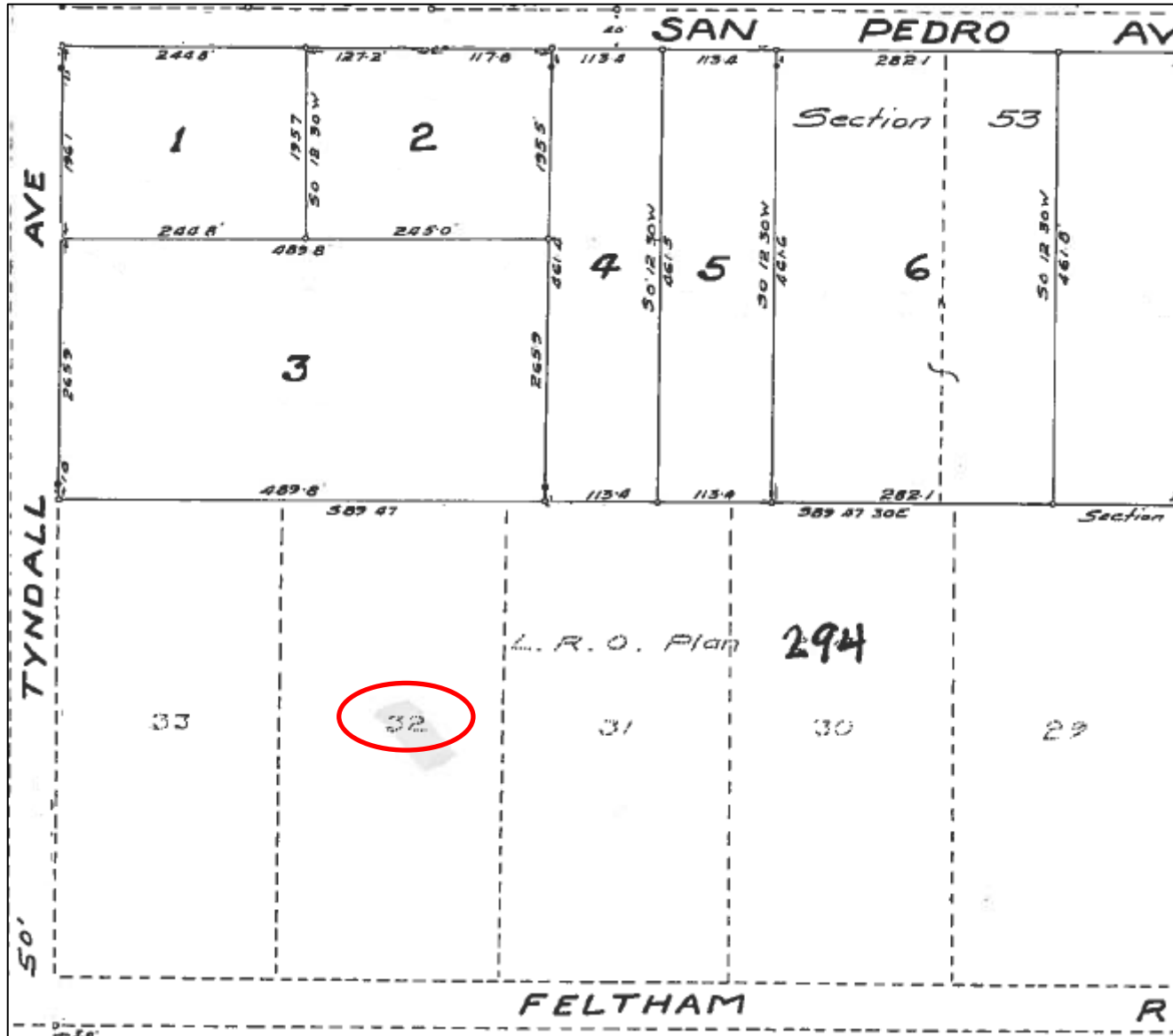


Plan [868] showing subdivision of part of Sec.53..., 1907

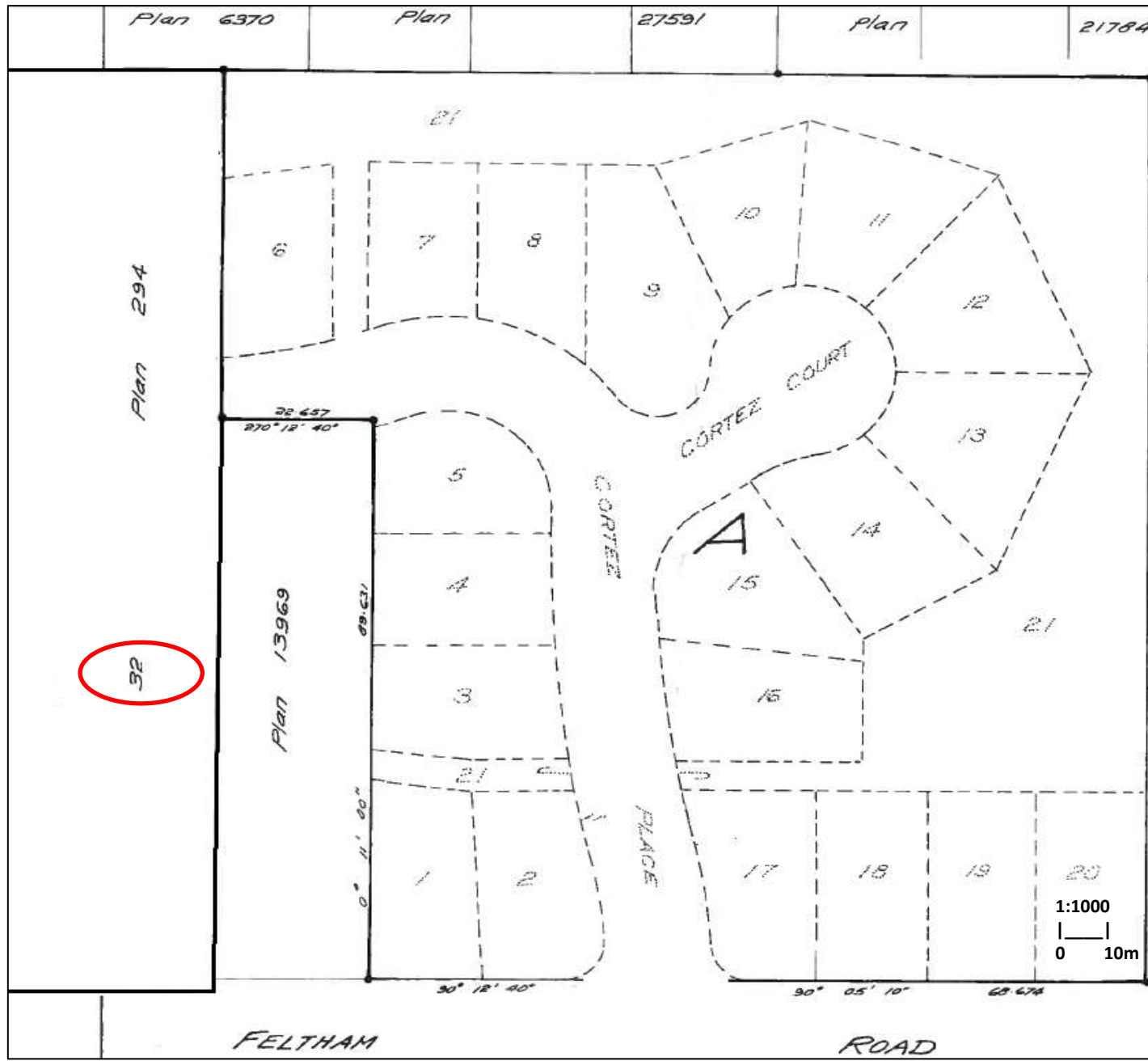


[part of] Plan [6370] of subdivision...Section 53..., 1947

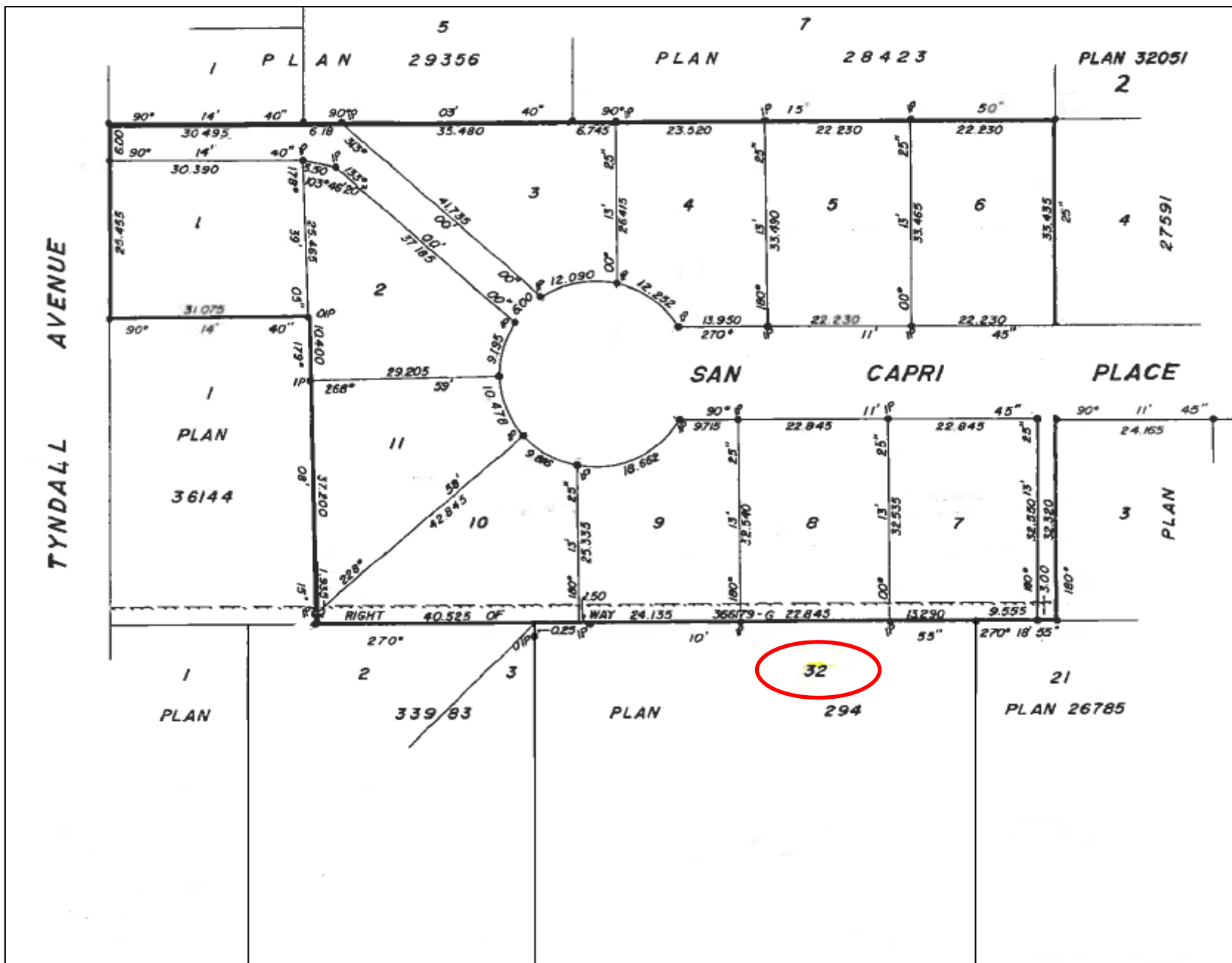
Lots 5 & 6
north of Lot 32



[part of] *Plan [26785]* of *subdivision of Lot 30, Section 58...*, 1973 (east of Lot 32)




[part of] *Plan [37375] of subdivision of Lot 2 Section 53..., 1981* (north of Lot 32)



difficult to follow all the sub-dividing?



How to show the change over time from the above previous slides?

- ArcGIS on-line recently started supporting raster files as “tile layers”  **esri**
- Cartodb supposedly supports rasters 
- Click2Map ? 
- GeoCommons ? 
- MangoMap supposedly supports rasters... 
- ScribbleMaps ? 
- ZeeMaps ? (also \$20 month!) 

BUT....with all of the above....I don't just want a raster (background) layer

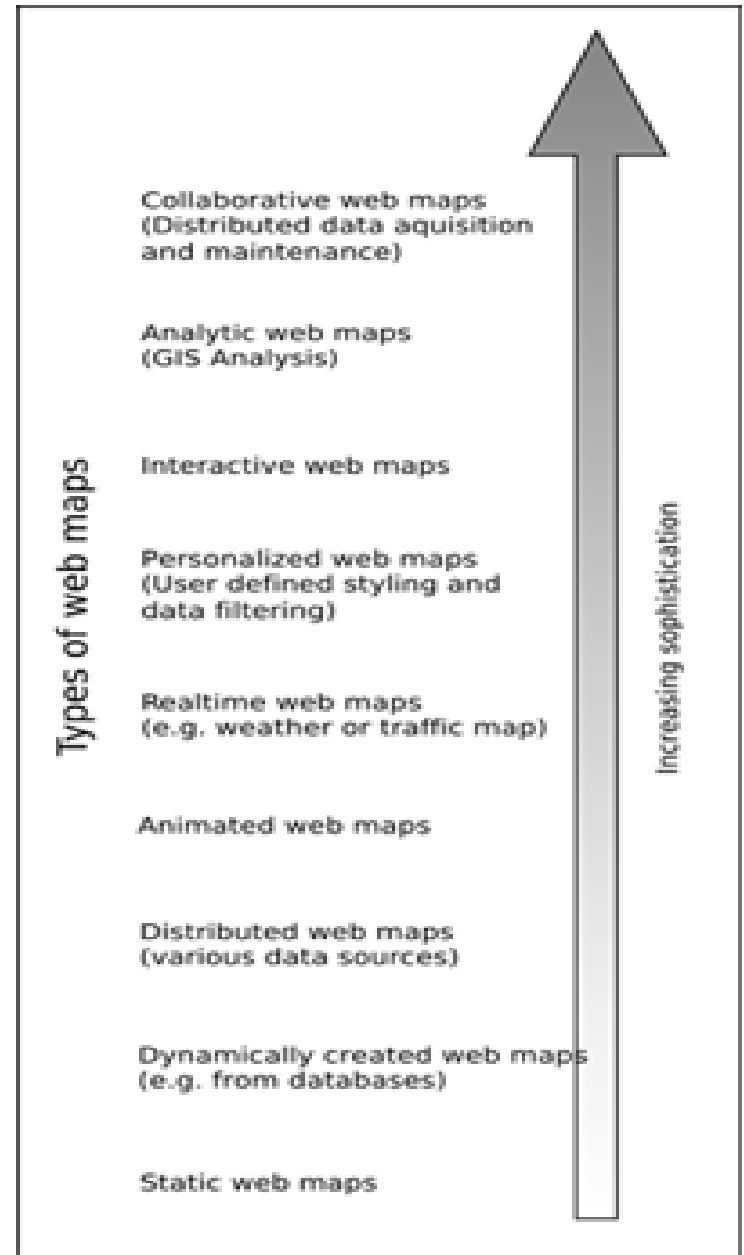
AND

I want users to have some control over what they display

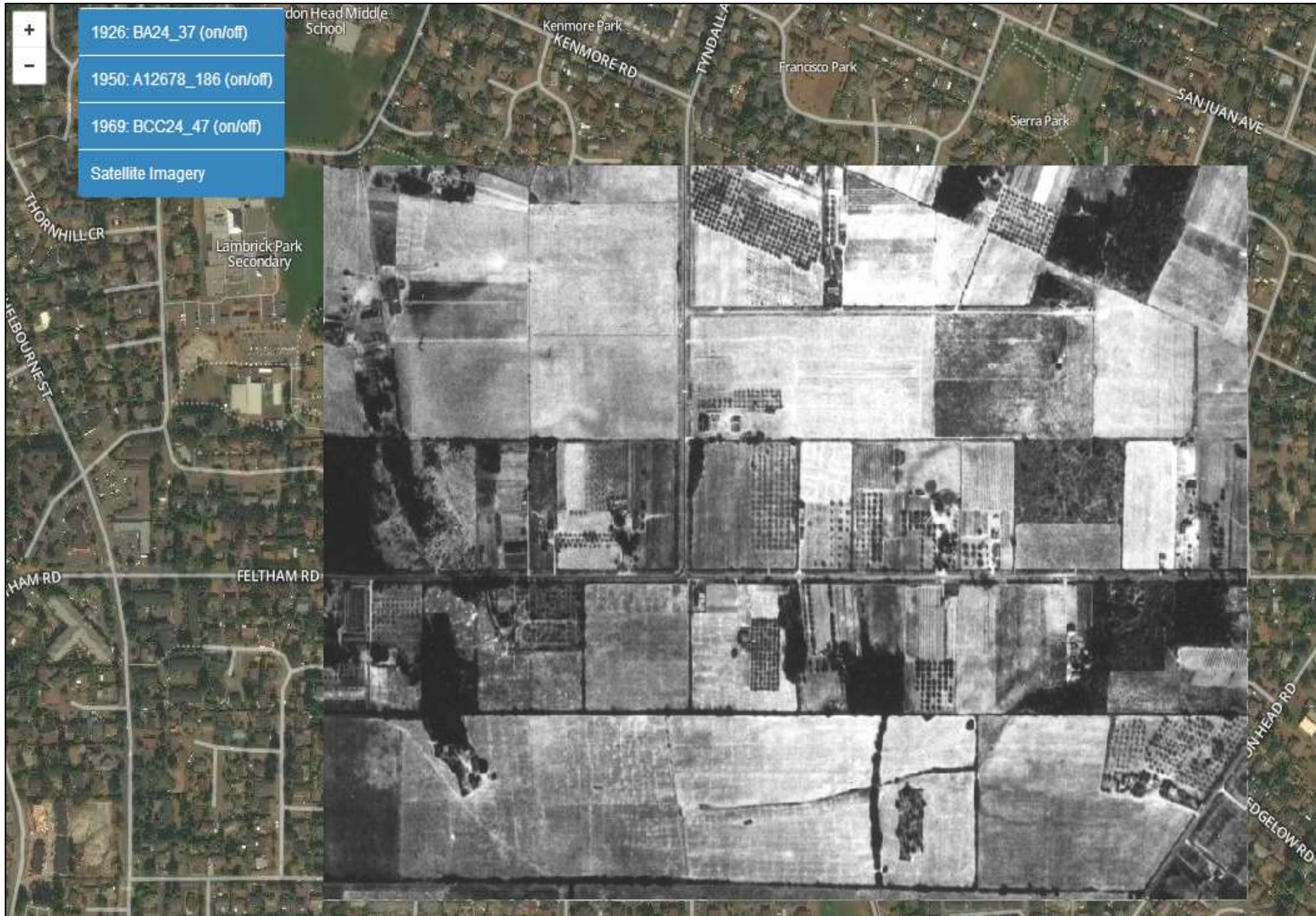
WebMaps

Types of webmaps

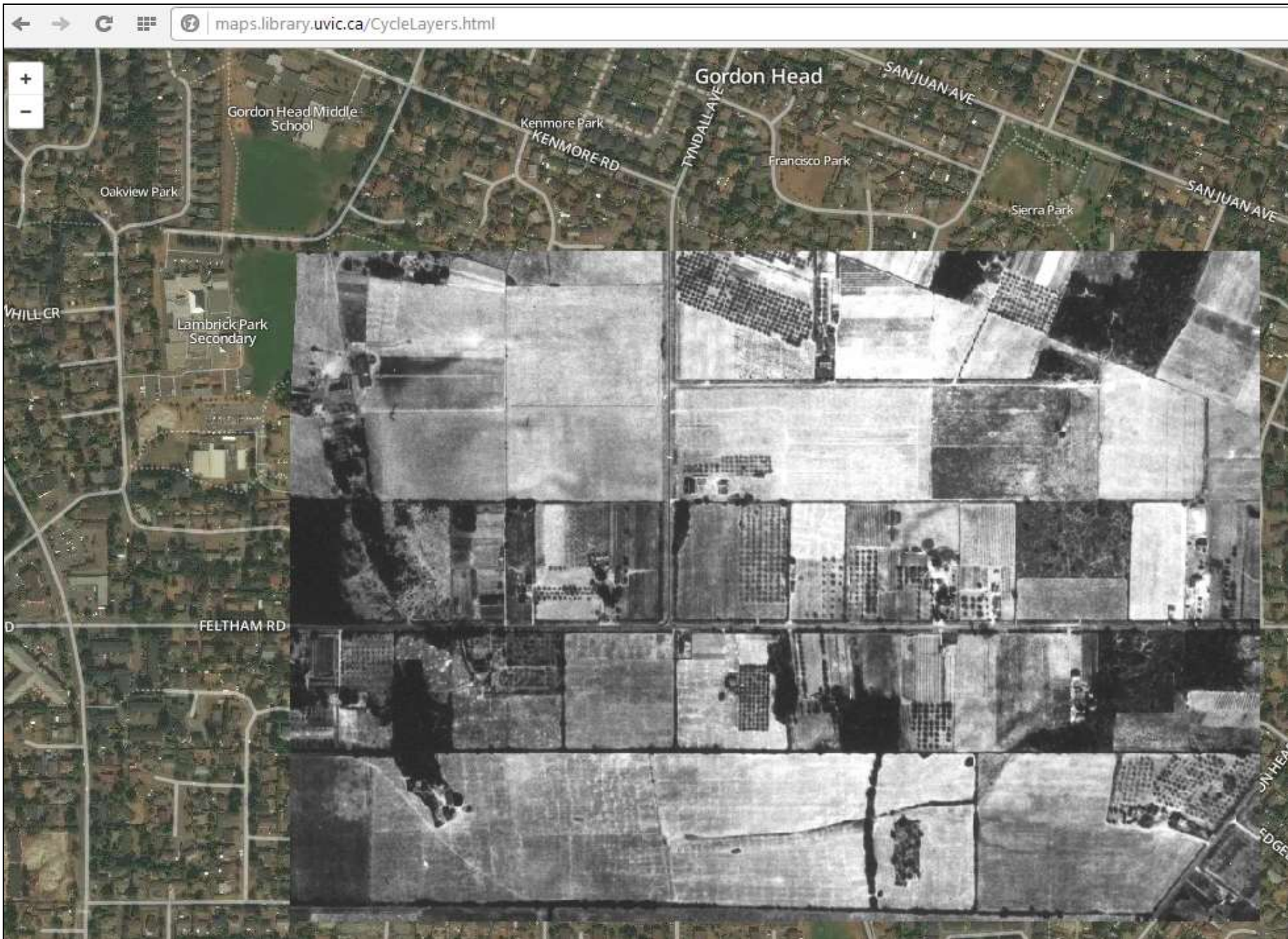
- (static) image (.jpg, .png)
- .pdf with elements to turn off/on
- zoom, pan
- zoom, pan, elements to turn off/on
- download data
- upload data
- some spatial analysis

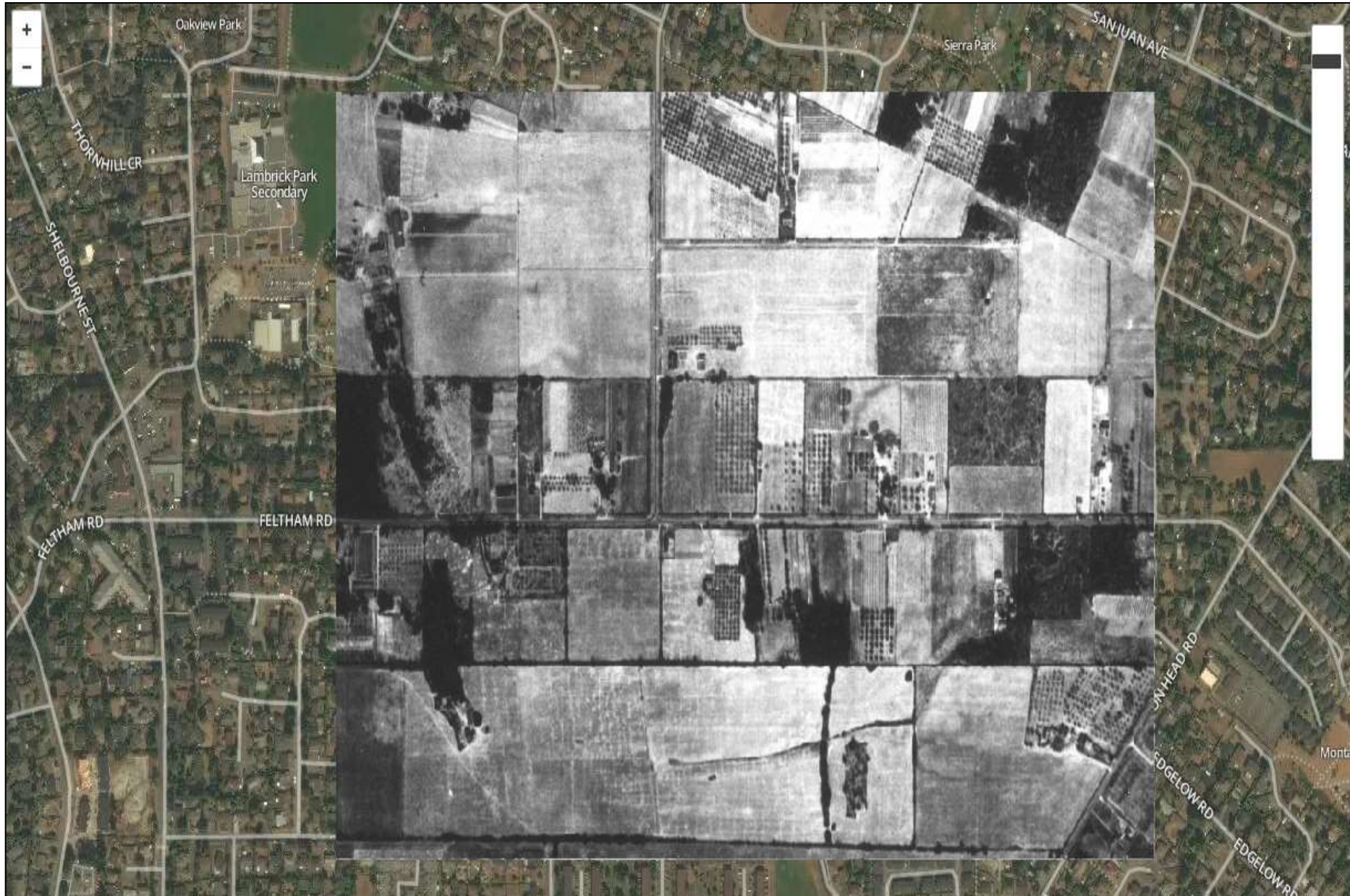


How to display? [Turn layers on/off?](#)



How to display? [Auto-Cycle Layers](#)





code

MapBox has
hundreds
of [examples](#)
with code

```
<html>
<head>
<meta charset=utf-8 />
<title>Opacity control</title>
<meta name='viewport' content='initial-scale=1,maximum-scale=1,user-scalable=no' />
<script src='https://api.tiles.mapbox.com/mapbox.js/v2.0.1/mapbox.js'></script>
<link href='https://api.tiles.mapbox.com/mapbox.js/v2.0.1/mapbox.css' rel='stylesheet' />
<style>
  body { margin:0; padding:0; }
  #map { position:absolute; top:0; bottom:0; width:100%; }
</style>
</head>
<body>

<style>
.ui-opacity {
  background:#FFF;
  position:absolute;
  left:10px;
  top:70px;
  height:200px;
  width:28px;
  border:1px solid rgba(0,0,0,0.4);
  border-radius:3px;
  z-index:1000;
}
.ui-opacity .handle {
  position:absolute;
  background:#404040;
  left:0;
  top:20px;
  width:26px;
  height:10px;
  border-radius:1px;
  cursor:pointer;
  cursor:ns-resize;
}
.ui-opacity .handle:hover {
  background:#303030;
}
</style>
```

Why the growth / land change?

Population:

1901: 26,884

1911: 43,604

1921: 63,896

1931: 69,733

1941: 86,011

40.8% increase!

1951: 121,712

33.8% increase

1961: 162,452

1971: 195,845

1981: 233,481

1991: 287,897



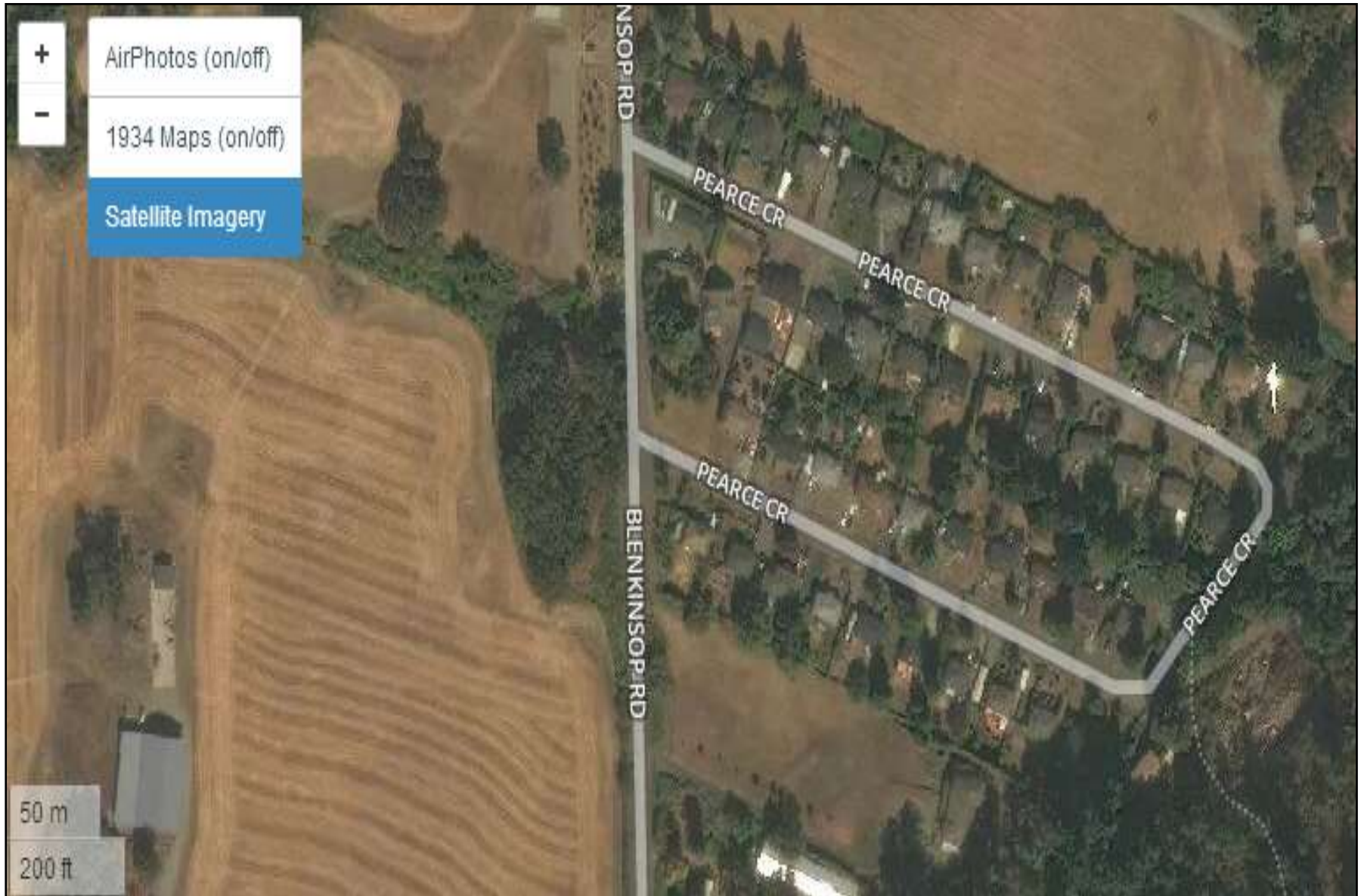
Why the growth / land change?

Zoning: 1924 Oak Bay Zoning by-law

1936 Saanich by-law (Lot 32 study area)

**BC's Agricultural Land Commission was ("only") established between 1972 – 1974
which in turn established Agricultural Reserve Land(s)**

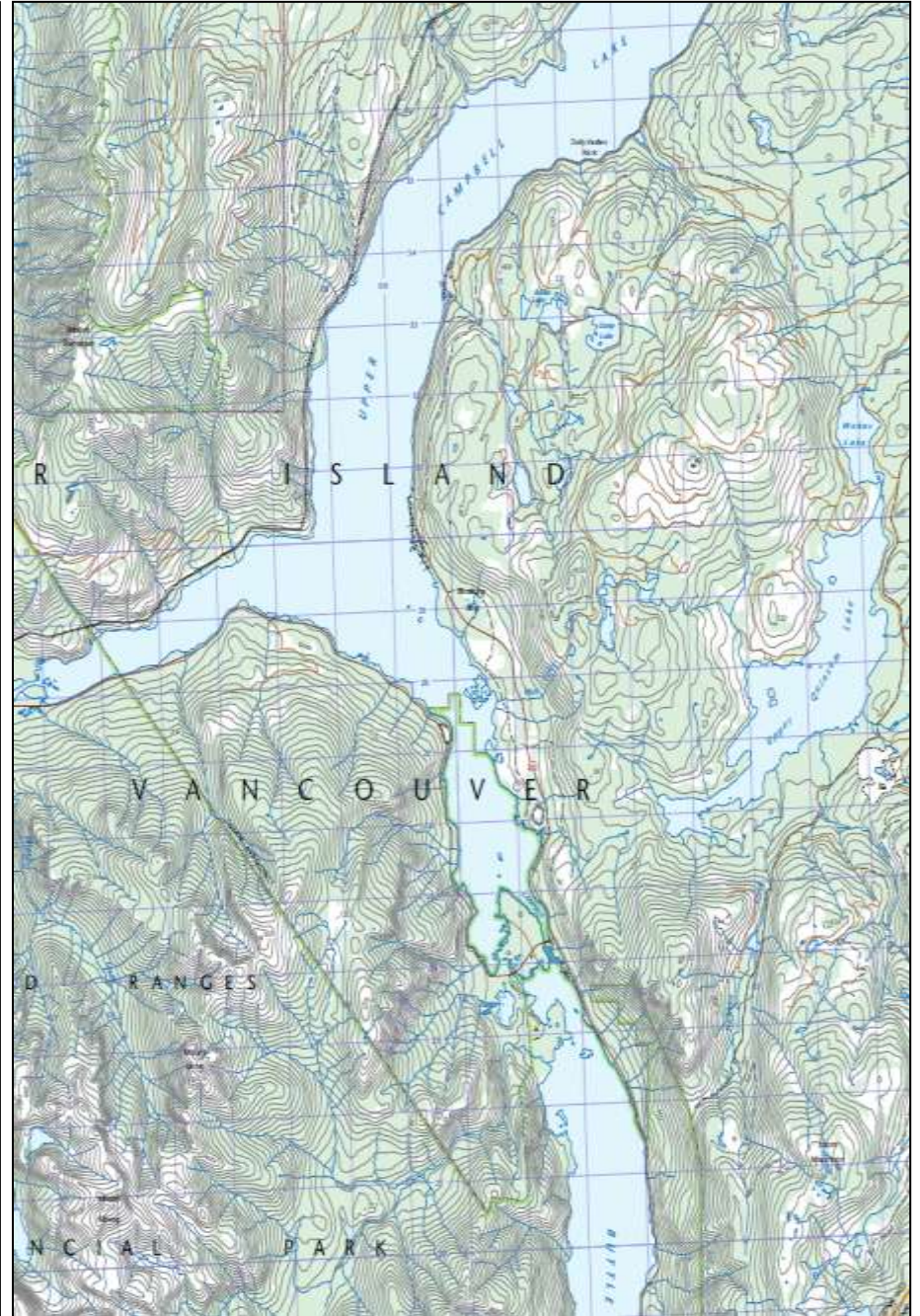
**Pearce Cres. in the midst of agricultural land
built in early 1960s before the establishment of the BC ALC in 1972-74**



(part of sheet) 92F/12: before / after 1952-54 dam construction



1946: 1st edition



2011 4th edition

Map Libraries are filled with “change over time”!

- Can web maps highlight our collections?



- Web maps: “hot like chicken s**t”

Conclusions...

- **Urban agriculture is a good thing...**
- **Web maps of items in our collections might increase awareness...**

