

**An Analysis of Undergraduate Course Delivery  
At the University of Victoria:  
Academic Year 1997/98**

**Chris Conway  
Esther Hart**

**Office of Institutional Analysis  
University of Victoria**

**October 8, 1998**

## 1. Summary

At UVic, undergraduate courses are delivered in numerous formats. Slightly more than two-thirds are delivered in a “traditional” fashion -- by a single instructor, for credit, in a classroom-based (or similar) lecture format, on campus. (Sometimes such courses involve a laboratory or seminar component as well). A significant minority of courses, however, is delivered in “alternative” formats ranging from independently supervised studies, to co-op work term placements, to team-taught courses. This report

- (a) presents a summary of undergraduate course delivery methods by faculty and department for the 1997/98 academic year;
- (b) provides a detailed analysis of undergraduate course sections delivered in the “traditional” format, at the level of the department/school, faculty, course level, and instructor type;
- (c) summarizes course section sizes for “traditional” courses by department/school, level and faculty.

## 2. Key Findings

Traditionally delivered courses accounted for 71 percent of all undergraduate course sections, and 89 percent of all undergraduate EETs, in 1997/98. These overall percentages are virtually unchanged from the 1996/97 academic year. Faculty by faculty, traditional delivery represented a low of 26 percent of all course sections in the Faculty of Human and Social Development, and a high of 84 percent in the Faculty of Humanities. In individual departments and schools, traditional delivery represents over 90 percent of course sections in numerous departments (including Hispanic Studies, Electrical Engineering, French, Greek and Roman Studies, Mathematics and Statistics, and Mechanical Engineering), and less than 50 percent in others (including Public Administration, Child and Youth Care, Nursing, Social Work, General Engineering).

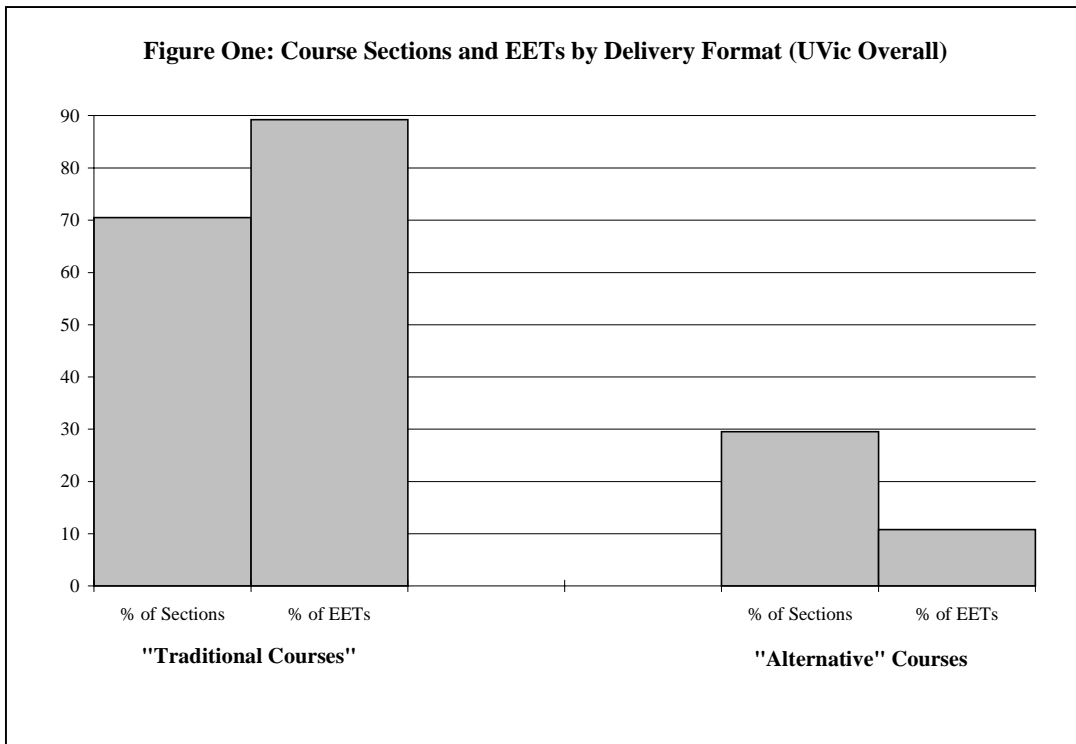
Courses delivered in alternative formats constitute 29 percent of all undergraduate course sections, and 11 percent of all undergraduate EETs. Off campus/distance courses and independently supervised studies courses each represent 9 percent of total course sections. Sections of co-op work term courses account for 6 percent. All other alternative formats (practica, cross-listed courses, courses offered by multiple faculties, non-credit courses, and challenge courses) represent only about 6 percent of total course sections combined (*See Table One and Figure One*).

Across the entire university, regular faculty instructed in 57 percent of all traditionally delivered courses, while non-regular (sessional) faculty instructed in 43 percent. Regular faculty members accounted for anywhere from 34 percent of course sections (Education) to 68 percent of course sections (Science). Sessional faculty performed slightly more teaching at the 100-level than regular faculty (10.7 percent of total instruction versus 9.7 percent for regular faculty); however, regular faculty performed more teaching than sessionals at the 200-, 300- and 400-levels.

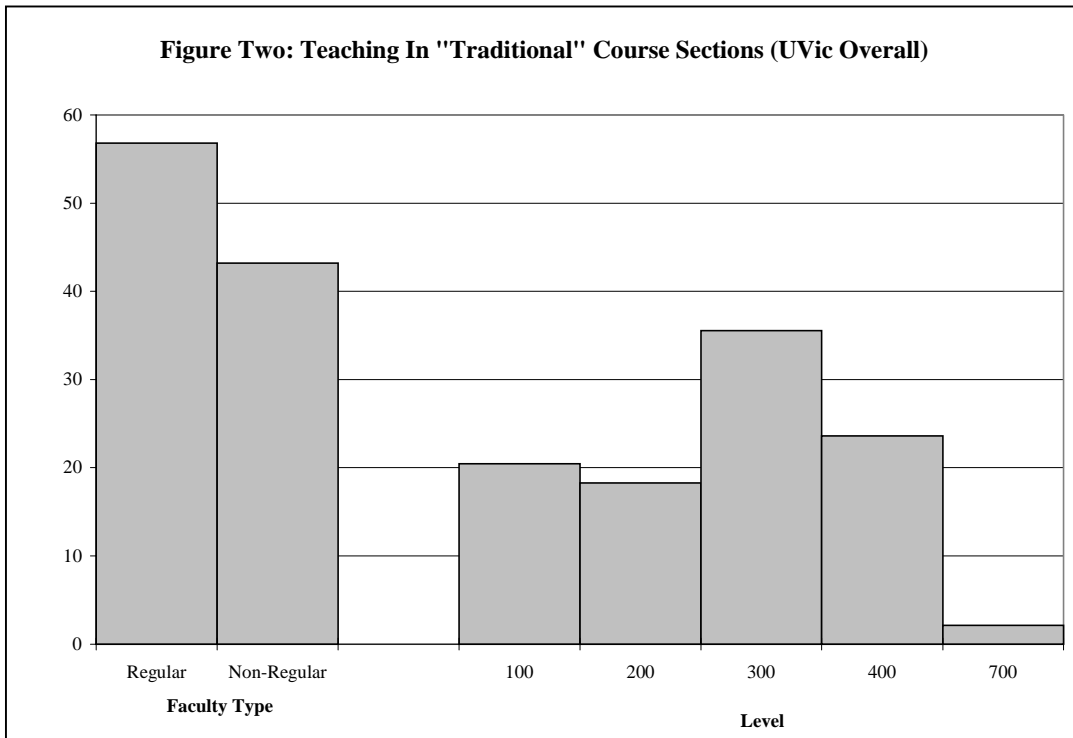
Individual departments and schools utilize sessional and regular faculty in different ways: the overall contribution of regular and sessional faculty, and their utilization at each level of teaching, vary widely (*See Table Two and Figures Two, Three (a), and Three (b)*).

Sections of courses delivered in the traditional format averaged 37 registrations across all undergraduate offerings. Section size declined with level, decreasing from a mean of 53 registrations in 100-level courses to 20 registrations in 400-level courses. By department, the mean class size varied from lows of 14.5 in Theatre and 15.6 in Germanic Studies, to highs of 80.8 in Biology and 78.9 in Psychology (*See Table Three*).

An analysis of traditional undergraduate course sections over time yields several results: (see *Figures Five and Six*). For UVic overall, and in each Faculty, average section size (in traditional delivery courses) has increased fairly consistently since 1994/95: by about 10% in Education and Social Sciences, by as much as 31% in Science, and by 20% across UVic overall (*Figure Five* is intended to serve as a general guide only). Course classification criteria differ slightly by year; the Faculties most affected by these changing criteria—Business, Law, HSD and Fine Arts—have been grouped in order to "isolate" the major discrepancies. Second, for UVic overall, the percentage of teaching performed by regular faculty remained virtually unchanged from 1996/97 to 1997/98.

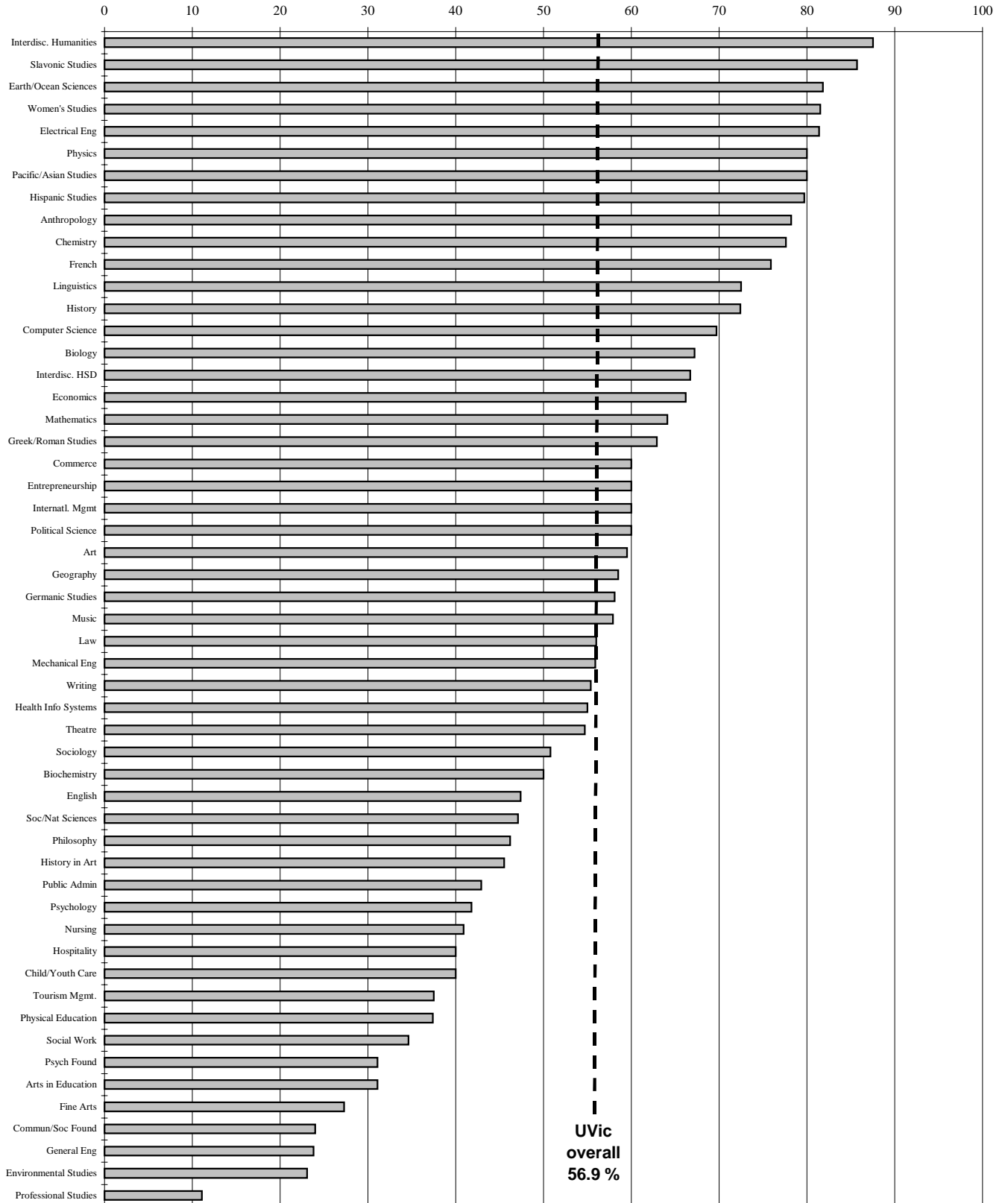


- 71 percent of all course sections representing 89 percent of undergraduate EETs are of the “traditional” variety; 29 percent of sections representing 11 percent of EETs fall into one of the “alternative” delivery formats.

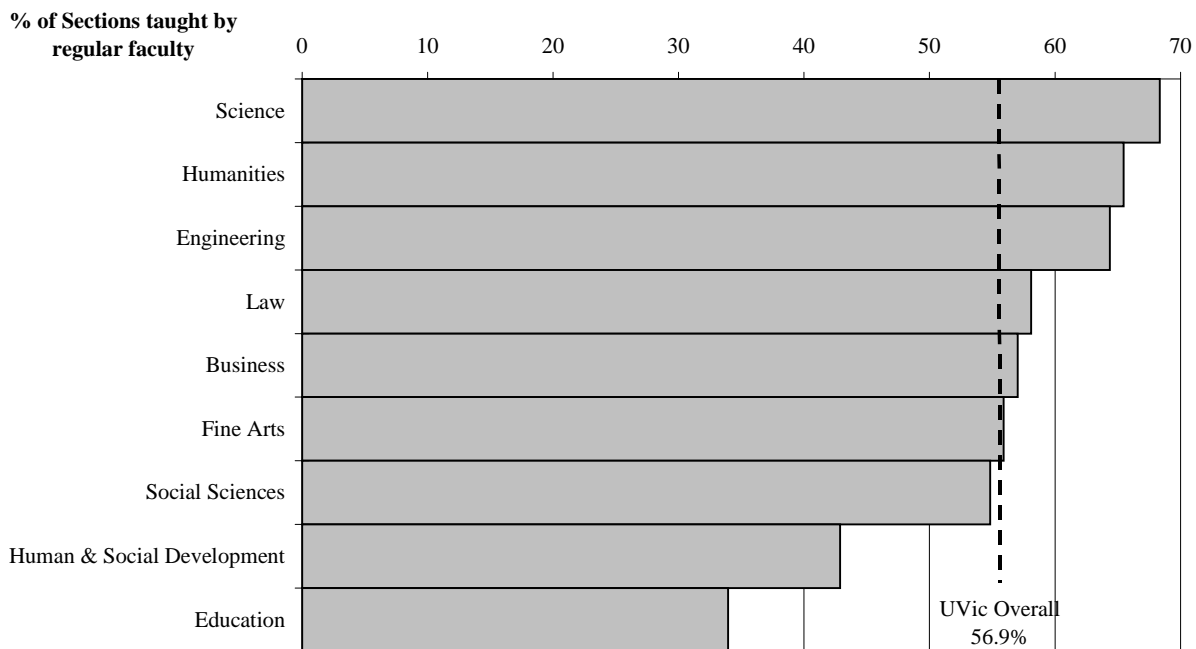


- 57 percent of “traditional” course sections are taught by UVic’s regular faculty; 43 percent by non-regular faculty.
- About 20 percent of “traditional” course sections are offered at each of the 100 and 200 level, one-third are at the 300 level; and one quarter are at the 400 level.

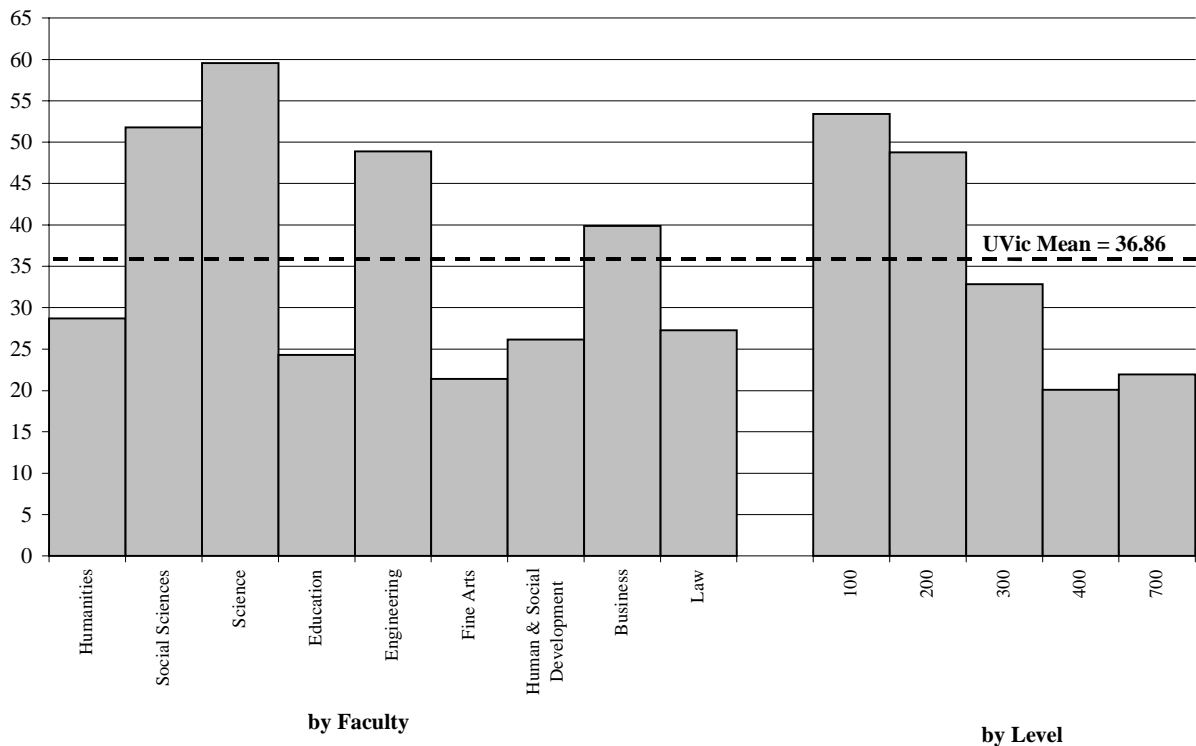
**Figure Three (a): Percentage of "Traditional" Sections Taught by Regular Faculty (by Department/School)**

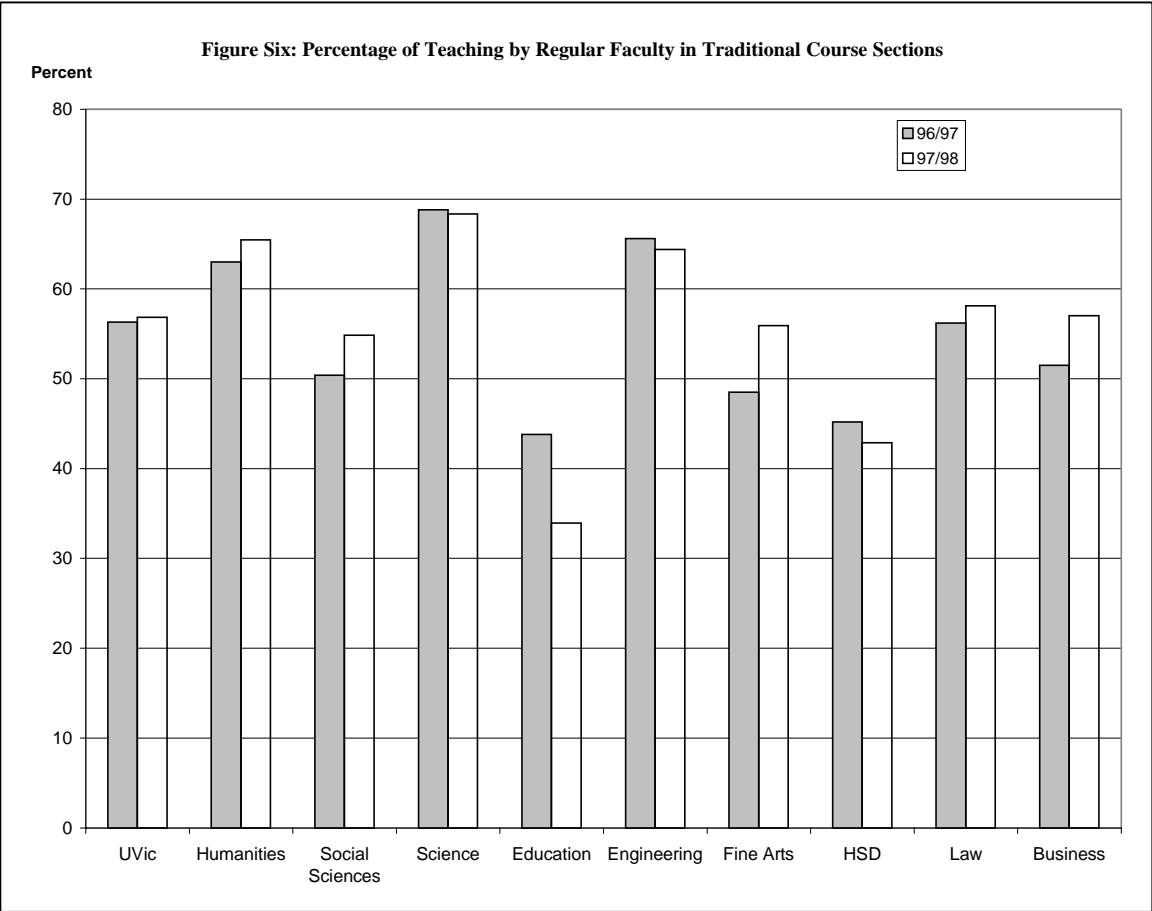
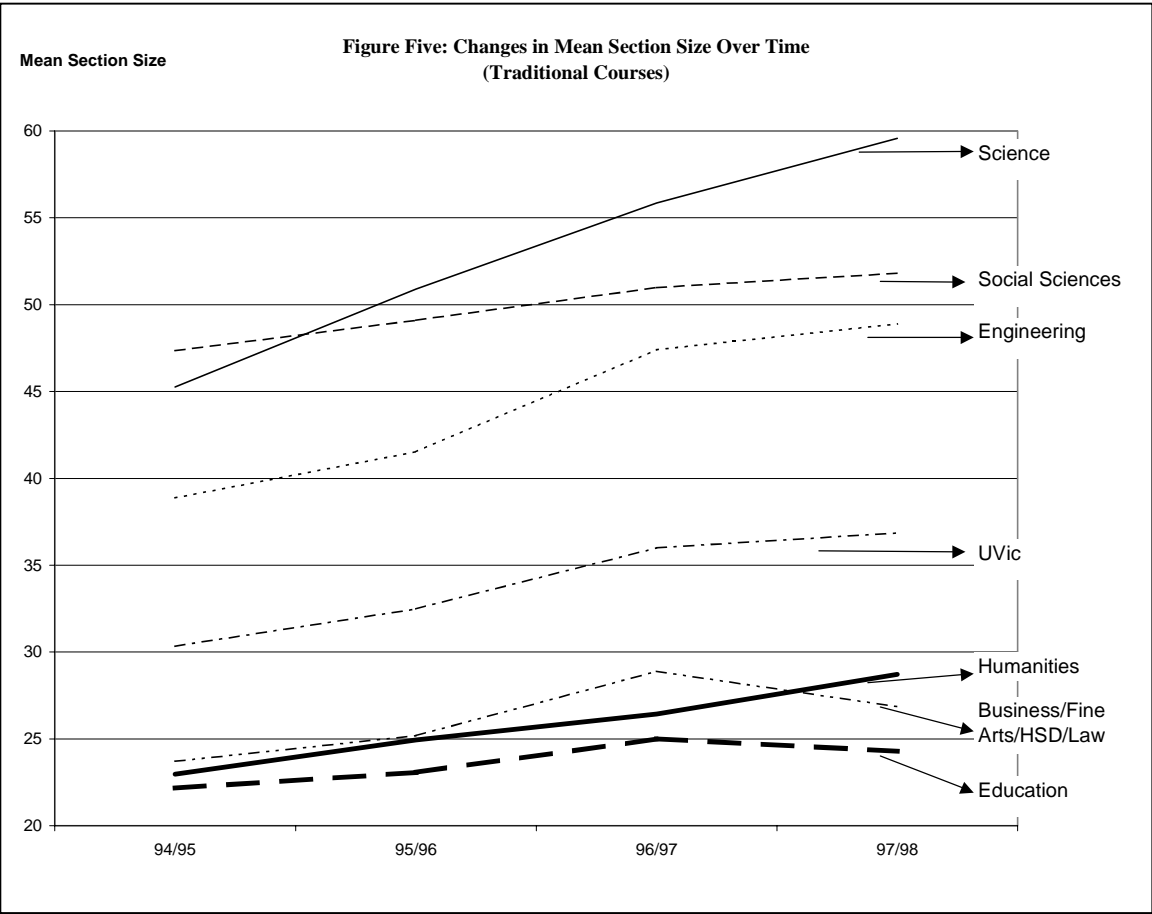


**Figure Three (b): Percentage of "Traditional" Course Sections Taught by Regular Faculty (by Faculty)**



**Figure Four: Mean Section Sizes in "Traditional" Course Sections**





University of Victoria Office of Institutional Analysis  
 Analysis of Undergraduate Course Delivery

Table One: Distribution of 1997/98 Undergraduate Course Sections and EETs by Delivery Format and Faculty  
 October 1998

	Humanities	Social Sciences	Science	Education	Engineering	Fine Arts	HSD	Law	Business	Total	
<b>(a) Course Sections</b>											
Traditional Classroom Delivery	84.0	77.6	71.7	75.1	67.4	66.6	26.4	70	74.9	<b>70.5</b>	
Independent Supervised Study	9.2	11.2	8.6	7.1	7.0	14.4	5.0	7.7		<b>8.7</b>	
Practica		0.3		5.0			13.9			<b>2.1</b>	
Off-Campus and Distance	1.8	1.9	3.9	7.9	1.6	10.4	49.0	1.5	2.9	<b>8.6</b>	
Cross-Listed Courses	0.7	3.1				0.7	1.0		5.3	<b>1.0</b>	
Courses Taught by Multiple Faculty	0.6		0.4	0.2	0.8	4.9	0.5	0.8		<b>0.9</b>	
Co-op Work Term Courses	1.9	4.8	14.4	4.7	20.9	3.1	2.9	12.3	7.0	<b>6.4</b>	
Non-Credit Courses	1.3		0.6		1.6				2.3	<b>0.6</b>	
Challenge Credit Courses	0.5	1.0	0.4		0.8		1.3		0.6	<b>0.5</b>	
<b>Total</b>											
	percent	<b>22.2</b>	<b>15.2</b>	<b>12.8</b>	<b>14.0</b>	<b>6.8</b>	<b>11.1</b>	<b>10.0</b>	<b>3.4</b>	<b>4.5</b>	<b>100.0</b>
	# sections	<b>846</b>	<b>581</b>	<b>487</b>	<b>535</b>	<b>258</b>	<b>425</b>	<b>382</b>	<b>130</b>	<b>171</b>	<b>3815</b>
<b>(b) EETs</b>											
Traditional Classroom Delivery	97.5%	97.8%	97.8%	84.6%	98.4%	82.9%	30.4%	90.0%	93.7%	89.2%	
Alternative Delivery	2.5	2.2	2.2	15.4	1.6	17.1	69.6	10.0	6.3	10.8	
<b># EETs</b>	<b>2531</b>	<b>2482</b>	<b>2268</b>	<b>1251</b>	<b>865</b>	<b>897</b>	<b>1040</b>	<b>328</b>	<b>543</b>	<b>12205</b>	



Table Two: Distribution of 1997/98 "Traditional" Course Units by Faculty, Level and Instructor Type  
 October 1998

Faculty	Regular Faculty						Non-Regular Faculty						# 1.5-unit section eqivs.
	100	200	300	400	700	Total	100	200	300	400	700	Total	
<b>University Overall</b>													
Humanities	14.5	15.0	22.1	13.9		65.4	20.8	5.7	5.7	2.5		34.6	848
Social Sciences	4.9	9.0	24.9	15.9		54.8	8.0	5.6	26.2	5.4		45.2	465
Science	16.9	13.6	19.4	18.5		68.4	10.1	8.2	6.8	6.5		31.6	367
Education	2.7	4.3	9.3	12.1	5.4	33.9	6.3	8.9	17.9	23.9	9.0	66.1	435
Engineering	7.5	12.6	16.7	27.6		64.4	4.6	13.2	7.5	10.3		35.6	174
Fine Arts	10.9	11.0	24.5	9.4		55.9	8.9	9.8	17.5	7.8		44.1	332
Human/Social Devt	1.5	4.5	24.1	12.8		42.9	0.8	9.0	23.3	24.1		57.1	133
Law	18.2	0.0	39.9	0.0		58.1	2.6	0.0	39.3	0.0		41.9	103
Business	0.8	14.8	18.8	22.7		57.0	0.8	10.2	18.8	13.3		43.0	128
University Overall	9.7	10.8	20.8	14.7	0.8	56.8	10.7	7.5	14.7	8.9	1.3	43.2	2985

Table Two: Distribution of 1997/98 "Traditional" Course Units by Faculty, Level and Instructor Type  
 October 1998

Faculty	Regular Faculty						Non-Regular Faculty						# 1.5-unit section eqivs.
	100	200	300	400	700	Total	100	200	300	400	700	Total	
<b>Humanities</b>													
English	12.3	12.8	14.0	13.2		52.3	37.9	4.9	1.6	3.3		47.7	243
French	19.4	19.4	12.5	20.8		72.2	19.4	1.4	5.6	1.4		27.8	72
Germanic Studies	4.8	11.9	11.9	26.2		54.8	31.0	7.1	4.8	2.4		45.2	42
Greek/Roman Studies	13.9	16.7	30.6	2.8		63.9	11.1	5.6	16.7	2.8		36.1	36
Hispanic Studies	40.0	15.0	8.3	16.7		80.0	18.3	1.7	0.0	0.0		20.0	60
History	6.8	14.5	41.9	8.5		71.8	8.5	3.4	11.1	5.1		28.2	117
Interdisc. Humanities	12.5	12.5	25.0	37.5		87.5	0.0	0.0	0.0	12.5		12.5	8
Linguistics	7.5	15.1	32.1	18.9		73.6	5.7	1.9	15.1	3.8		26.4	53
Pacific/Asian Studies	24.0	16.7	25.0	15.6		81.3	11.5	3.1	3.1	1.0		18.8	96
Philosophy	8.1	9.5	18.9	9.5		45.9	24.3	23.0	6.8	0.0		54.1	74
Slavonic Studies	21.1	21.1	36.8	10.5		89.5	0.0	0.0	10.5	0.0		10.5	19
Women's Studies	7.1	32.1	35.7	7.1		82.1	0.0	14.3	3.6	0.0		17.9	28
<b>Total</b>	<b>14.5</b>	<b>15.0</b>	<b>22.1</b>	<b>13.9</b>		<b>65.4</b>	<b>20.8</b>	<b>5.7</b>	<b>5.7</b>	<b>2.5</b>		<b>34.6</b>	<b>848</b>
<b>Social Sciences</b>													
Anthropology	7.3	16.4	41.8	12.7		78.2	14.5	1.8	5.5	0.0		21.8	55
Environmental Studies	0.0	0.0	7.7	15.4		23.1	0.0	0.0	59.0	17.9		76.9	39
Economics	10.3	8.8	29.4	17.6		66.2	7.4	7.4	16.2	2.9		33.8	68
Geography	4.2	8.4	26.3	20.0		58.9	6.3	7.4	20.0	7.4		41.1	95
Political Science	3.6	9.1	25.5	21.8		60.0	7.3	5.5	23.6	3.6		40.0	55
Psychology	5.6	8.9	15.6	11.1		41.1	5.6	7.8	40.0	5.6		58.9	90
Sociology	1.6	9.5	27.0	12.7		50.8	14.3	4.8	27.0	3.2		49.2	63
<b>Total</b>	<b>4.9</b>	<b>9.0</b>	<b>24.9</b>	<b>15.9</b>		<b>54.8</b>	<b>8.0</b>	<b>5.6</b>	<b>26.2</b>	<b>5.4</b>		<b>45.2</b>	<b>465</b>
<b>Science</b>													
Biochemistry	0.0	8.1	18.9	18.9		45.9	0.0	2.7	16.2	35.1		54.1	37
Biology	6.3	9.4	28.3	23.0		67.0	0.0	12.6	15.7	4.7		33.0	64
Chemistry	18.4	14.3	26.5	18.4		77.6	4.1	10.2	6.1	2.0		22.4	49
Earth/Ocean Sciences	9.1	13.6	22.7	36.4		81.8	4.5	0.0	9.1	4.5		18.2	22
Mathematics	22.9	16.8	13.0	11.5		64.1	21.4	10.7	2.3	1.5		35.9	131
Physics	26.6	14.1	17.2	21.9		79.7	9.4	3.1	1.6	6.3		20.3	64
<b>Total</b>	<b>16.9</b>	<b>13.6</b>	<b>19.4</b>	<b>18.5</b>		<b>68.4</b>	<b>10.1</b>	<b>8.2</b>	<b>6.8</b>	<b>6.5</b>		<b>31.6</b>	<b>367</b>

Table Two: Distribution of 1997/98 "Traditional" Course Units by Faculty, Level and Instructor Type  
 October 1998

Faculty	Regular Faculty						Non-Regular Faculty						# 1.5-unit section eqivs.
	100	200	300	400	700	Total	100	200	300	400	700	Total	
<b>Education</b>													
Arts in Education	3.6	11.3	10.5	4.9	1.2	31.5	1.6	34.0	25.6	4.9	2.4	68.5	82
Commun/Soc Found	0.0	0.0	9.2	10.9	4.2	24.4	0.0	0.0	26.9	37.0	11.8	75.6	119
Psych Found	0.0	0.0	7.9	20.2	0.0	28.1	0.0	0.0	16.9	55.1	0.0	71.9	89
Physical Education	6.3	12.2	16.4	13.4	2.5	50.9	23.9	13.9	7.6	3.8	0.0	49.2	79
Professional Studies	0.0	0.0	0.0	0.0	11.1	11.1	0.0	0.0	0.0	11.1	77.8	88.9	9
Soc/Nat Sciences	7.0	0.0	1.8	12.3	25.7	46.8	12.3	0.0	7.0	5.3	28.7	53.3	57
<b>Total</b>	<b>2.7</b>	<b>4.3</b>	<b>9.3</b>	<b>12.1</b>	<b>5.4</b>	<b>33.9</b>	<b>6.3</b>	<b>8.9</b>	<b>17.9</b>	<b>23.9</b>	<b>9.0</b>	<b>66.1</b>	<b>435</b>
<b>Engineering</b>													
Computer Science	15.8	10.5	17.1	26.3		69.7	7.9	9.2	10.5	2.6		30.3	76
Electrical Eng	0.0	11.6	25.6	44.2		81.4	0.0	7.0	0.0	11.6		18.6	43
General Eng	4.8	19.0	0.0	0.0		23.8	9.5	52.4	0.0	14.3		76.2	21
Mechanical Eng	0.0	14.7	14.7	26.5		55.9	0.0	5.9	14.7	23.5		44.1	34
<b>Total</b>	<b>7.5</b>	<b>12.6</b>	<b>16.7</b>	<b>27.6</b>		<b>64.4</b>	<b>4.6</b>	<b>13.2</b>	<b>7.5</b>	<b>10.3</b>		<b>35.6</b>	<b>174</b>
<b>Fine Arts</b>													
Art	21.4	11.9	28.6	0.0		61.9	14.3	14.3	9.5	0.0		38.1	42
Fine Arts	0.0	25.0	8.3	0.0		33.3	0.0	8.3	58.3	0.0		66.7	12
History in Art	4.1	10.2	20.4	12.2		46.9	0.0	10.2	30.6	12.2		53.1	49
Music	14.1	10.1	30.8	8.1		63.1	10.1	13.1	9.1	4.5		36.8	66
Theatre	13.2	7.7	19.8	13.2		53.9	11.0	6.6	17.6	11.0		46.2	91
Writing	5.6	13.9	27.8	11.1		58.3	9.7	8.3	13.9	9.7		41.7	72
<b>Total</b>	<b>10.9</b>	<b>11.0</b>	<b>24.5</b>	<b>9.4</b>		<b>55.9</b>	<b>8.9</b>	<b>9.8</b>	<b>17.5</b>	<b>7.8</b>		<b>44.1</b>	<b>332</b>
<b>Human and Social Development</b>													
Child/Youth Care	0.0	14.7	14.7	14.7		44.1	0.0	11.8	23.5	20.6		55.9	34
Health Info Science	10.0	5.0	15.0	25.0		55.0	5.0	10.0	20.0	10.0		45.0	20
Interdisc. HSD	0.0	0.0	33.3	33.3		66.7	0.0	0.0	16.7	16.7		33.3	6
Nursing	0.0	0.0	28.6	3.6		32.1	0.0	0.0	17.9	50.0		67.9	28
Public Admin	0.0	0.0	42.9	0.0		42.9	0.0	0.0	28.6	28.6		57.1	7
Social Work	0.0	0.0	28.9	10.5		39.5	0.0	15.8	28.9	15.8		60.5	38
<b>Total</b>	<b>1.5</b>	<b>4.5</b>	<b>24.1</b>	<b>12.8</b>		<b>42.9</b>	<b>0.8</b>	<b>9.0</b>	<b>23.3</b>	<b>24.1</b>		<b>57.1</b>	<b>133</b>

Table Two: Distribution of 1997/98 "Traditional" Course Units by Faculty, Level and Instructor Type  
 October 1998

Faculty	Regular Faculty						Non-Regular Faculty						# 1.5-unit section eqivs.
	100	200	300	400	700	Total	100	200	300	400	700	Total	
<b>Business</b>													
Commerce	1.2	22.4	17.6	18.8		60.0	1.2	15.3	16.5	7.1		40.0	85
Entrepreneurship	0.0	0.0	0.0	60.0		60.0	0.0	0.0	20.0	20.0		40.0	10
Hospitality	0.0	0.0	30.0	10.0		40.0	0.0	0.0	30.0	30.0		60.0	10
Internatl. Mgmt	0.0	0.0	26.7	33.3		60.0	0.0	0.0	20.0	20.0		40.0	15
Tourism Mgmt.	0.0	0.0	25.0	12.5		37.5	0.0	0.0	25.0	37.5		62.5	8
<b>Total</b>	<b>0.8</b>	<b>14.8</b>	<b>18.8</b>	<b>22.7</b>		<b>57.0</b>	<b>0.8</b>	<b>10.2</b>	<b>18.8</b>	<b>13.3</b>		<b>43.0</b>	<b>128</b>

Table Three: Mean Section Sizes of 1997/98 "Traditional" Course Sections by Department/School and Level  
 October 1998

Faculty/Department	Course Level						Number of Sections
	100	200	300	400	700	All	
English	26.98	29.32	32.31	31.48		28.73	215
French	22.52	24.07	22.56	16.15		21.50	58
Germanic Studies	23.00	15.86	13.20	11.09		15.58	31
Greek/Roman Studies	37.38	36.13	34.41	3.00		33.69	35
Hispanic Studies	27.21	25.30	20.20	9.80		23.34	59
History	73.67	52.14	31.42	22.50		37.69	87
Interdisc. Humanities	13.00	32.00	24.00	13.00		18.13	8
Linguistics	62.57	42.78	29.04	13.67		32.45	51
Pacific/Asian Studies	23.24	39.50	22.32	22.00		26.24	75
Philosophy	34.92	41.70	36.80	13.80		36.04	52
Slavonic Studies	15.00	11.00	35.00	4.00		25.85	13
Women's Studies	38.50	25.77	26.00	3.00		25.96	27
<b>Humanities Total</b>	<b>29.46</b>	<b>33.51</b>	<b>29.53</b>	<b>19.88</b>		<b>28.72</b>	<b>711</b>
Anthropology	87.42	66.90	36.15	27.86		51.87	55
Environmental Studies			31.46	29.31		30.74	39
Economics	120.17	97.64	46.42	13.21		60.88	68
Geography	63.20	54.47	32.64	24.40		37.18	94
Political Science	87.50	55.13	35.00	16.93		39.05	55
Psychology	203.90	93.67	61.55	27.46		78.84	79
Sociology	98.40	70.22	44.44	26.70		54.18	61
<b>Social Sciences Total</b>	<b>111.18</b>	<b>73.18</b>	<b>42.21</b>	<b>23.25</b>		<b>51.81</b>	<b>451</b>
Biochemistry		179.00	41.91	30.14		50.71	28
Biology	233.50	147.43	57.96	30.67		80.83	64
Chemistry	117.45	99.08	33.50	10.70		63.76	49
Earth/Ocean Sciences	219.00	46.00	67.71	9.44		61.55	22
Mathematics	81.57	69.69	21.95	6.71		59.49	131
Physics	91.21	27.45	18.42	7.00		35.02	55
<b>Science Total</b>	<b>98.79</b>	<b>85.30</b>	<b>39.94</b>	<b>16.35</b>		<b>59.57</b>	<b>349</b>
Art in Education	21.25	21.65	16.71	11.00	9.67	18.12	74
Commun/Soc Found			22.95	23.86	21.05	22.97	100
Psychological Found			24.23	22.97		23.43	61
Physical Education	32.40	39.44	34.47	20.33	23.00	31.75	107
Professional Studies				18.00	20.38	20.11	9
Soc/Nat Sciences	25.64		15.00	15.20	24.48	21.98	51
<b>Education Total</b>	<b>30.57</b>	<b>28.18</b>	<b>23.24</b>	<b>21.37</b>	<b>21.93</b>	<b>24.29</b>	<b>402</b>
Computer Science	121.06	66.07	49.52	13.50		59.30	76
Electrical Eng		74.25	73.18	14.79		40.79	43
General Eng	43.67	36.33		45.33		38.67	21
Mechanical Eng		60.29	68.10	19.47		42.18	34
<b>Engineering Total</b>	<b>110.00</b>	<b>56.71</b>	<b>60.14</b>	<b>16.95</b>		<b>48.89</b>	<b>174</b>
Art	24.20	14.27	19.13			19.79	34
Fine Arts		26.33	22.00			23.18	11
History in Art	169.00	61.14	32.56	12.09		35.09	44
Music	40.38	19.79	21.65	17.00		26.04	56
Theatre	28.64	17.75	10.90	7.74		14.51	75
Writing	27.88	19.10	14.03	13.53		16.48	63
<b>Fine Arts Total</b>	<b>33.37</b>	<b>23.60</b>	<b>19.21</b>	<b>11.47</b>		<b>21.40</b>	<b>283</b>

University of Victoria Office of Institutional Analysis  
 Analysis of Undergraduate Course Delivery

Table Three: Mean Section Sizes of 1997/98 "Traditional" Course Sections by Department/School and Level  
 October 1998

Faculty/Department	Course Level						Number of Sections
	100	200	300	400	700	All	
Child/Youth Care		37.71	31.00	26.63		31.60	20
Health Info Science	31.33	26.67	27.57	20.86		25.65	20
Interdisc. HSD			25.67	14.33		20.00	6
Nursing			27.54	24.00		26.09	22
Public Administration			12.60	17.00		13.86	7
Social Work		33.83	24.30	26.10		27.19	26
<b>HSD Total</b>	<b>31.33</b>	<b>34.19</b>	<b>25.33</b>	<b>23.41</b>		<b>26.17</b>	<b>101</b>
Commerce	56.50	51.19	49.72	29.36		45.16	85
Entrepreneurship			35.00	18.75		22.00	10
Hospitality			6.83	18.50		11.50	10
International Mgmt			53.00	43.63		48.00	15
Tourism Mgmt			29.75	23.75		26.75	8
<b>Business Total</b>	<b>56.50</b>	<b>51.19</b>	<b>42.56</b>	<b>28.57</b>		<b>39.91</b>	<b>128</b>
<b>Law Total</b>	<b>46.81</b>		<b>23.12</b>			<b>27.29</b>	<b>91</b>
<b>University Total</b>	<b>53.40</b>	<b>48.78</b>	<b>32.84</b>	<b>20.06</b>	<b>21.93</b>	<b>36.86</b>	<b>2643</b>