

FACILITIES MANAGEMENT

Saunders Building

PO Box 1700 STN CSC Victoria BC V8W 2Y2 Canada

Title:	Bob Wright Centre – Entire Building Power Outage
Location:	Bob Wright Centre (BWC) – Entire Building
Description:	<p>Facilities Management, AME Consulting and Aral Construction Ltd. are working on upgrades to the HVAC and humidity controls system in the Bob Wright Centre to provide more control and efficiency to B-Wing floor 0.</p> <p>A power outage is required to safely complete some electrical work for this project. For backup, there is a permanent emergency generator onsite, as well as a temporary emergency generator which will be installed in the loading bay to support critical equipment indicated by the administrative officers of the building.</p> <p>All rooms or equipment not highlighted in the attached list and drawings will be affected by this power outage including building cooling, lighting, power, etc. within the building.</p> <p>This shutdown will occur on a Saturday (12 hours) to reduce inconvenience to the building occupants.</p> <p>Staff to clean out fridges (if possible) in the staff lounges before Friday.</p> <p>Fire Alarm Masking and drain down is required for this scope of work.</p> <p>The contractor will be working with UVic shops and/or departmental leads to ensure we properly shut down and start up all equipment.</p> <p>We apologize for any inconvenience.</p>
Time Frame:	Friday, August 11, 2023 8:00am to Monday, August 14, 2023 at 11:00am (see following page for details)

FACILITIES MANAGEMENT

Saunders Building

PO Box 1700 STN CSC Victoria BC V8W 2Y2 Canada

Friday, August 11 - 8:00am - 5:00pm - Setup

8:00am – Setup the temporary emergency generator in the loading bay and be ready to utilize it for the power outage the following day

8:00am – 9:00 am – UVic shops to install AC units in B214 (QTY: 2), B320 (QTY:2) and B314a (QTY: 1) to cool these rooms as much as possible for the next day shutdown

9:00am – 10:00 am – Provide lights & timers to B-Wing Floor 0 occupants to plug in

10:00am – 11:00 am – Plug glove boxes on 3rd floor into emergency power. GC to provide extension cords, Chemistry lab lead to plug equipment into the extension cords. Any protocols to shutdown or startup the equipment must be completed by the lab leads.

Saturday, August 12 - 8:00am - 9:00pm - Shutdown

8:00am – 8:30am – Lab leads to plug in all equipment (Glovebox, Fridge & Freezers) on the 2nd floor into the temporary emergency generator provided by the GC. Any protocols to shutdown or startup the equipment must be completed by the lab leads.

8:30am – 8:30pm – Start shutdown (12 hours)

8:30pm – 9:00pm – Lab leads to unplug in all equipment on the 2nd floor from the temporary emergency generator. Lab leads to review their space and ensure all equipment is running and intended

Monday, August 14 - 8:00am - 11:00am - Decommission

10:00am – 11:00am – Unplug glove boxes on 3rd floor. GC to remove extension cords, Chemistry lab lead to unplug them and ensure the equipment is running as intended. Any protocols to shutdown or startup the equipment must be completed by the lab leads.

8:00am – 10:00am – GC to remove the temporary emergency generator

FMGT contact: Neel Chadda, Project Manager

Email address: neelchad@uvic.ca

Phone: 250-415-6982



FACILITIES MANAGEMENT

Saunders Building

PO Box 1700 STN CSC Victoria BC V8W 2Y2 Canada

Critical rooms & equipment provided by the building administrators:

Note: All equipment must be unplugged and plugged by the lab leads.

B-Wing Floor 0 occupants:

1. Water – Our RO system has to continue running - On emergency power.
2. Temperatures & Air pressure - On emergency power.
 - On normal power all four of the fans are running but on emergency power only two of those fans will be running and the air pressure will be reduced by half. As air pressure is reduced the ability to heat the space will also be reduced.
3. Lighting in Rooms B041, B037, B003, B005, B007, B015, B017 & the men's and women's change rooms will need lights as well (B048c & B43c) - Not on emergency power
 - GC to provide temporary lighting
 - For the change rooms the lights have two modes "high" and "low"; when no one is in the change room please turn it to "low" or the battery won't last the outage
4. The transfer station in B041, the B2 BSC in B037 procedure room and one BSC in B017 - On emergency power
 - UVic shops to provide twist lock cords
5. Fridge/freezer in hallway - Not on emergency power
 - B-Wing floor 0 occupants to move to another fridge/freezer
6. Freezer in necropsy - Emergency power plug on the wall
 - Requires an extension cord by UVic shops
7. Telephones & The Watchdog system - On emergency power

SEOS:

1. B320 – this is a shared & dedicated room for fridges and freezers, including at least one -80C freezer. Please confirm that all fridge/freezer circuits in room B320 including the walk-in cold room - On emergency power
 - Fans will be provided by the GC and doors will remain open to reduce heat loads within the room to the extent possible during the outage
2. B314a – this room contains several incubators, fridges and freezers - On emergency power but 2 incubators
 - Confirmed that the incubators are not required for emergency power
 - Fans will be provided by the GC and doors will remain open to reduce heat loads within the room to the extent possible during the outage
3. B314 – Deep Freezer - Not on emergency power
 - Will be powered by emergency power receptacles in Room B320
4. A220 - I have been in contact with Ed Wiebe regarding the server room. - Not on emergency power
 - Ed will power down the servers prior to the power outage

FACILITIES MANAGEMENT

Saunders Building


PO Box 1700 STN CSC Victoria BC V8W 2Y2 Canada

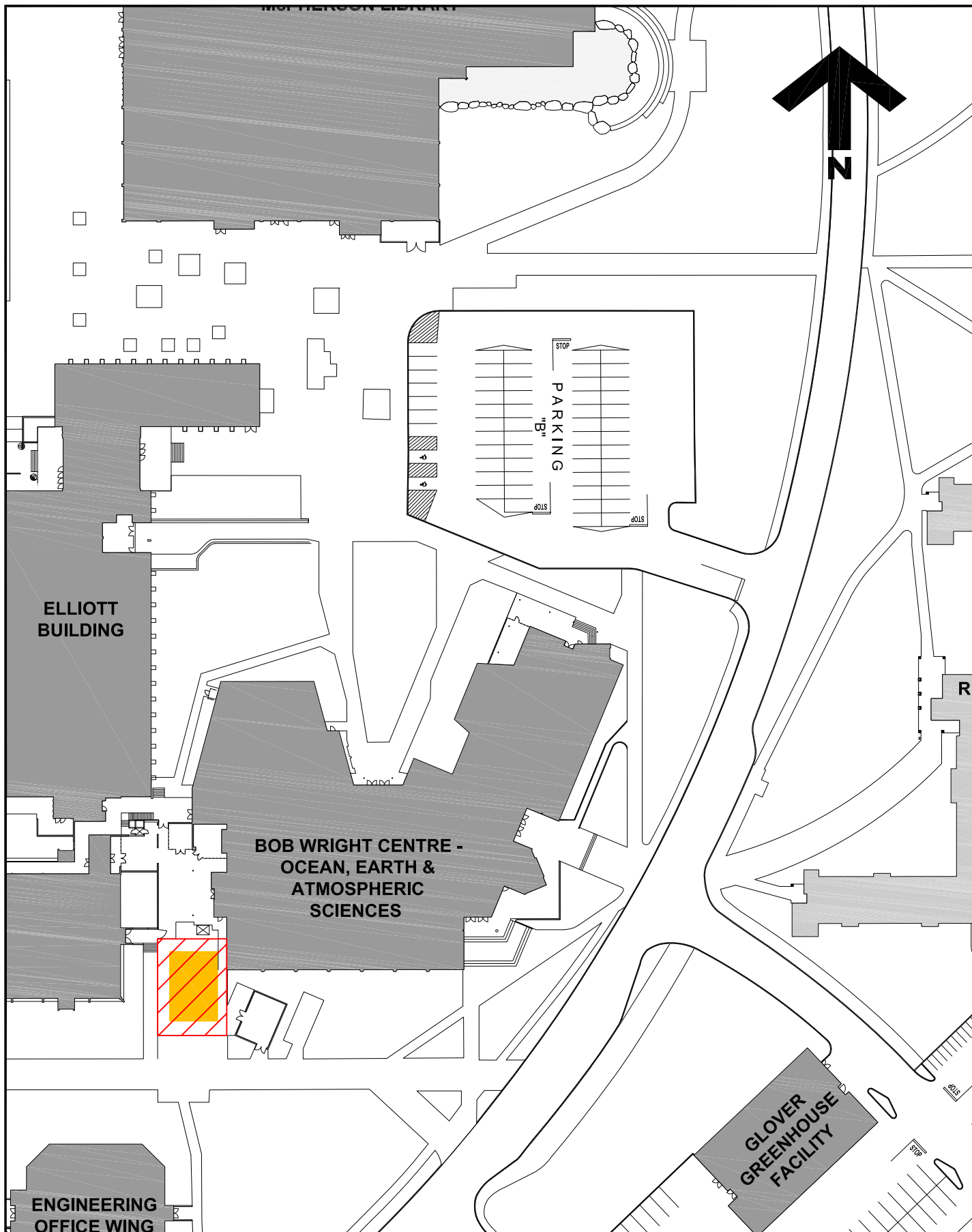
5. There are a number of staff fridges and freezers in various locations in both A and B wing.
- Not on emergency power
 - If SEOS and any other department can provide a list of staff fridge/freezer rooms by August 3rd, 2023, Custodial can review them on Sunday

Chemistry:

1. B213A – there are two fridge/freezers up against the wall by the door to B211b that need to be plugged in - On emergency power
2. B317 – there are 4 gloveboxes that need to remain on power. - Not on emergency power
 - Room B317; 1 glove box
 - Room B317b; 3 glove boxes
 - The 4 glove boxes in Room B317b can be powered by emergency power receptacles in Room B320, via extension cords.
3. B210 – There are 2 fridge/freezers that contain a lot of temperature-sensitive samples and 1 glovebox in this lab. - Not on emergency power
 - GC retains a temporary generator and runs an extension cord to the room
4. B214 there are 4 items in this lab space that must have power. A -80 freezer, -20 freezer and fridge, and a cell incubator - Not on emergency power
 - GC retains a temporary generator and runs an extension cord to the room
 - Portable AC will be provided by the GC to reduce heat loads within the room to the extent possible during the outage
5. B216 – one fridge/freezer that will require at least a regularly cycled power plug in. - Not on emergency power
 - GC retains a temporary generator and runs an extension cord to the room
6. B214a – one fridge/freezer that will require at least a regularly cycled power plug in. - Not on emergency power
 - Room has receptacles fed from 5kW UPS located in room B213; GC to provide extension cable

Additional Key notes:



1. Lab Leads check fridges, freezers, gloveboxes after outage is completed
 2. Roberta needs to know when the power will be offline from Aral so she can be onsite
 3. Arthur detailed Floor 0 A-Wing Microscope is on UPS
 4. When powering down the building, there is a small amount of time to start up the emergency generator
 5. General Contractor to provide updates every 3 hours to key stakeholders in the SEOS, Animal Care and Chemistry department. If you would like to be added to this list, please email neelchad@uvic.ca.
- 



**University
of Victoria**

Facilities Management

Notes:

-  Area of Work
-  Temporary Emergency Generator

Title:

**Bob Wright Centre
Vivar Air & Humid Cntrl
Project Notice**

Date:

24 July 2023

Scale:

1:1000

Drawn By:

JW

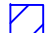


Project Number:

21-04940

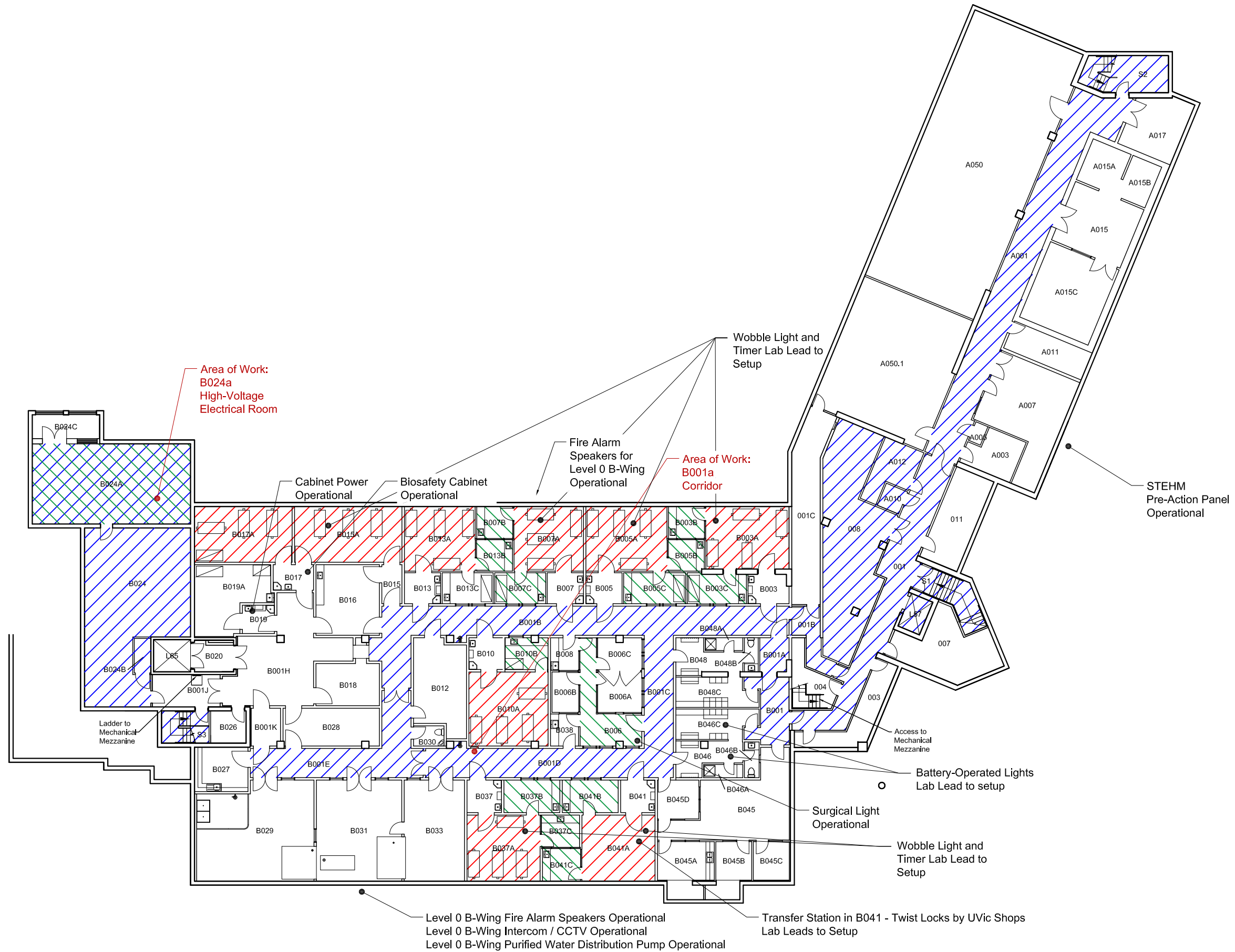
Drawing No.

SKA

Notes:

-  Lighting
-  Ceiling Receptacles
-  Receptacles

Note:
 Full list of rooms and equipment served by the emergency generator are provided in PDF format attached to this project notice and please review the design teams disclaimer note.
Design team PDF attached for your reference






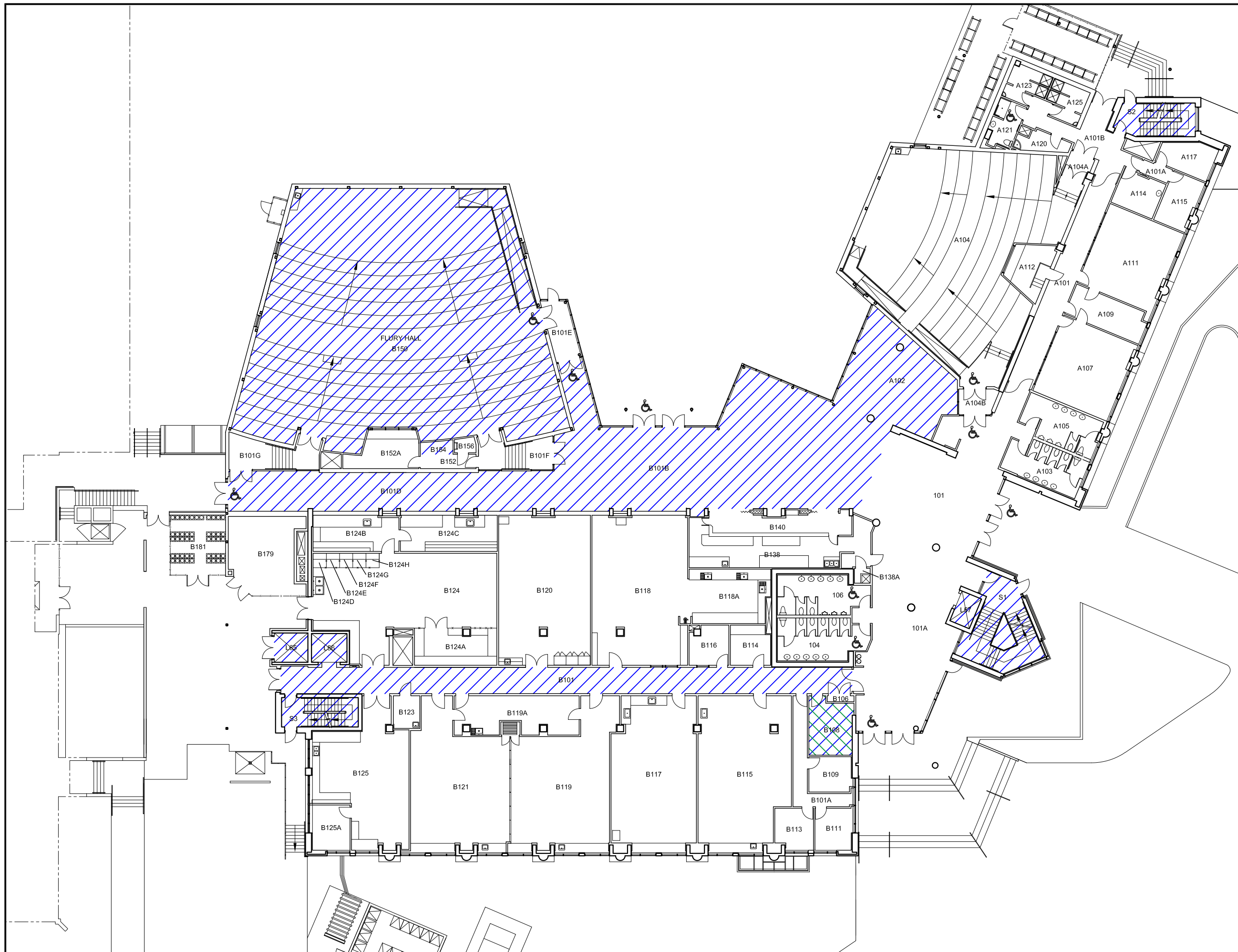
This drawing is for reference only. All site dimensions and conditions must be field-verified and reflected in all drawings submitted to UVic. The UVic title block is for FMGT use only. Modifications made to this document must be represented by the modifiers own title block. Any discrepancies found in UVic drawings must be communicated to UVic FMGT Project Manager assigned to the Project.

Title:
Bob Wright Centre
Vivair Air & Humidity Control
Eventual Power Shutdown
Level 0

Date: 24 July 2023
Scale: 1:300
Drawn By: JW
Project Number: 21-04940
Drawing No.: SK1

Notes:

-  Lighting
-  Ceiling Receptacles
-  Receptacles






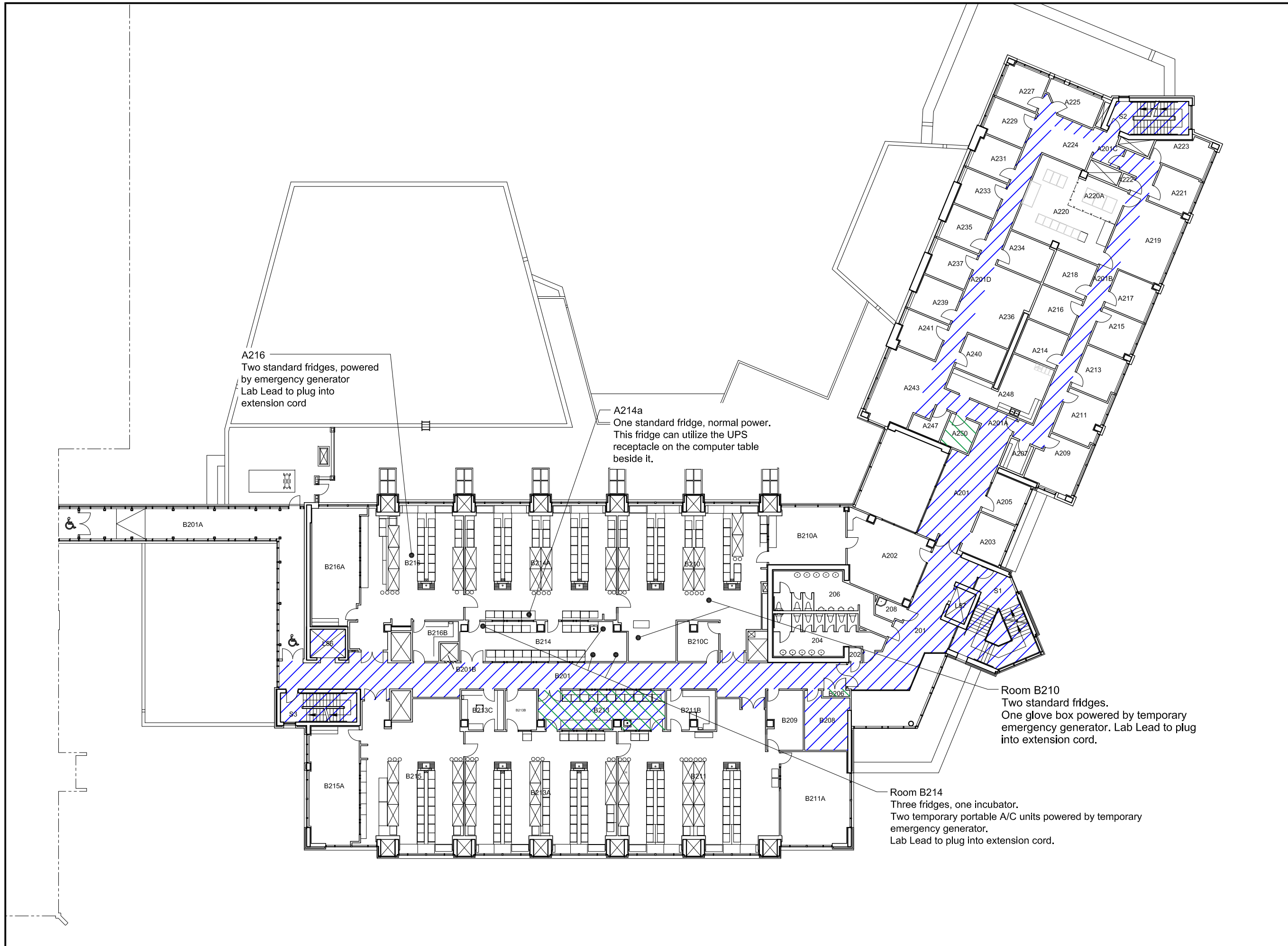
This drawing is for reference only. All site dimensions and conditions must be field-verified and reflected in all drawings submitted to UVic. The UVic title block is for FMGT use only. Modifications made to this document must be represented by the modifiers own title block. Any discrepancies found in UVic drawings must be communicated to UVic FMGT Project Manager assigned to the Project.

Title:
Bob Wright Centre
Vivair Air & Humidity Control
Eventual Power Shutdown
Level 1

Date: 24 July 2023
Scale: 1:300
Drawn By: JW
Project Number: 21-04940
Drawing No.: SK2

Notes:

-  Lighting
-  Ceiling Receptacles
-  Receptacles



A216
Two standard fridges, powered by emergency generator
Lab Lead to plug into extension cord

A214a
One standard fridge, normal power.
This fridge can utilize the UPS receptacle on the computer table beside it.

Room B210
Two standard fridges.
One glove box powered by temporary emergency generator. Lab Lead to plug into extension cord.




Room B214
Three fridges, one incubator.
Two temporary portable A/C units powered by temporary emergency generator.
Lab Lead to plug into extension cord.

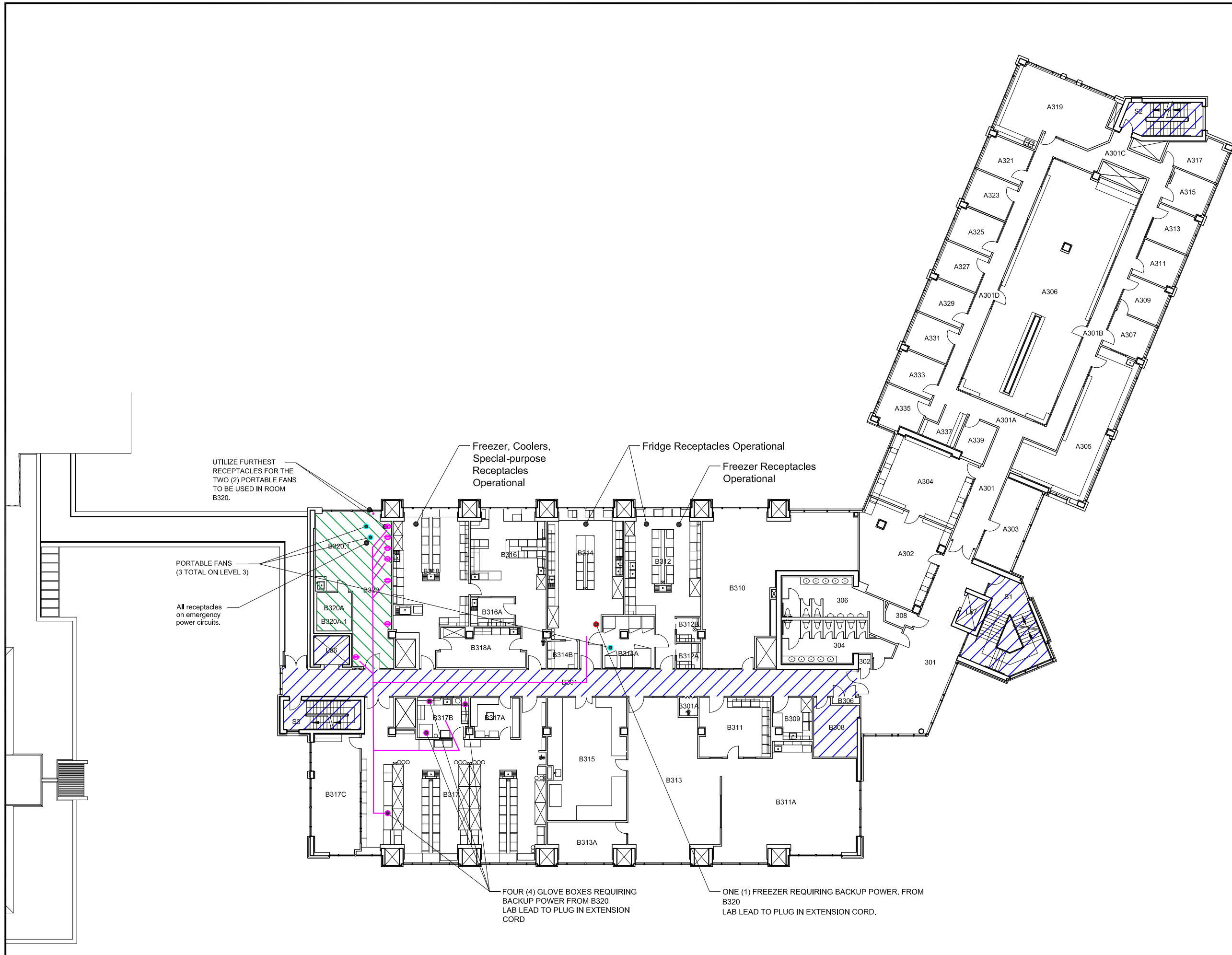
This drawing is for reference only. All site dimensions and conditions must be field-verified and reflected in all drawings submitted to UVic. The UVic title block is for FMGT use only. Modifications made to this document must be represented by the modifiers own title block. Any discrepancies found in UVic drawings must be communicated to UVic FMGT Project Manager assigned to the Project.

Title:
Bob Wright Centre
Vivair Air & Humidity Control
Eventual Power Shutdown
Level 2

Date: 24 July 2023
Scale: 1:300
Drawn By: JW
Project Number: 21-04940
Drawing No.: SK3

Notes:

-  Lighting
-  Ceiling Receptacles
-  Receptacles



UTILIZE FURTHEST RECEPTACLES FOR THE TWO (2) PORTABLE FANS TO BE USED IN ROOM B320.

PORTABLE FANS (3 TOTAL ON LEVEL 3)

All receptacles on emergency power circuits.

Freezer, Coolers, Special-purpose Receptacles Operational

Fridge Receptacles Operational

Freezer Receptacles Operational

FOUR (4) GLOVE BOXES REQUIRING BACKUP POWER FROM B320 LAB LEAD TO PLUG IN EXTENSION CORD




ONE (1) FREEZER REQUIRING BACKUP POWER. FROM B320 LAB LEAD TO PLUG IN EXTENSION CORD.

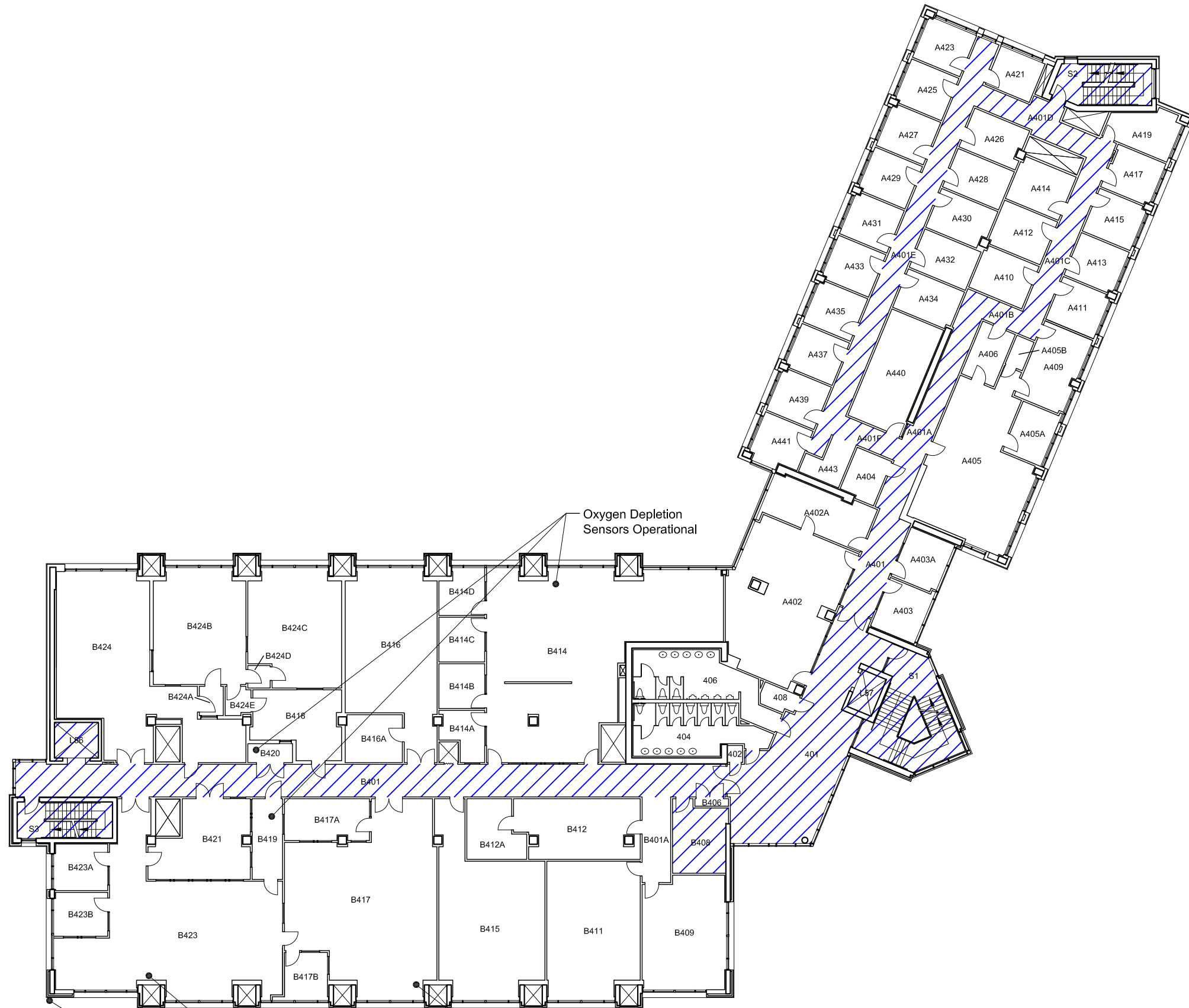
This drawing is for reference only. All site dimensions and conditions must be field-verified and reflected in all drawings submitted to UVic. The UVic title block is for FMGT use only. Modifications made to this document must be represented by the modifiers own title block. Any discrepancies found in UVic drawings must be communicated to UVic FMGT Project Manager assigned to the Project.

Title:
Bob Wright Centre
Vivair Air & Humidity Control
Eventual Power Shutdown
Level 3

Date: 24 July 2023
Scale: 1:300
Drawn By: JW
Project Number: 21-04940
Drawing No.: SK4

Notes:

-  Lighting
-  Ceiling Receptacles
-  Receptacles



Oxygen Depletion
Sensors Operational

Level 4 HEPA
Filters
Operational

Microprobe
Receptacle
Operational

Mass-Spectrometer
Receptacle
Operational

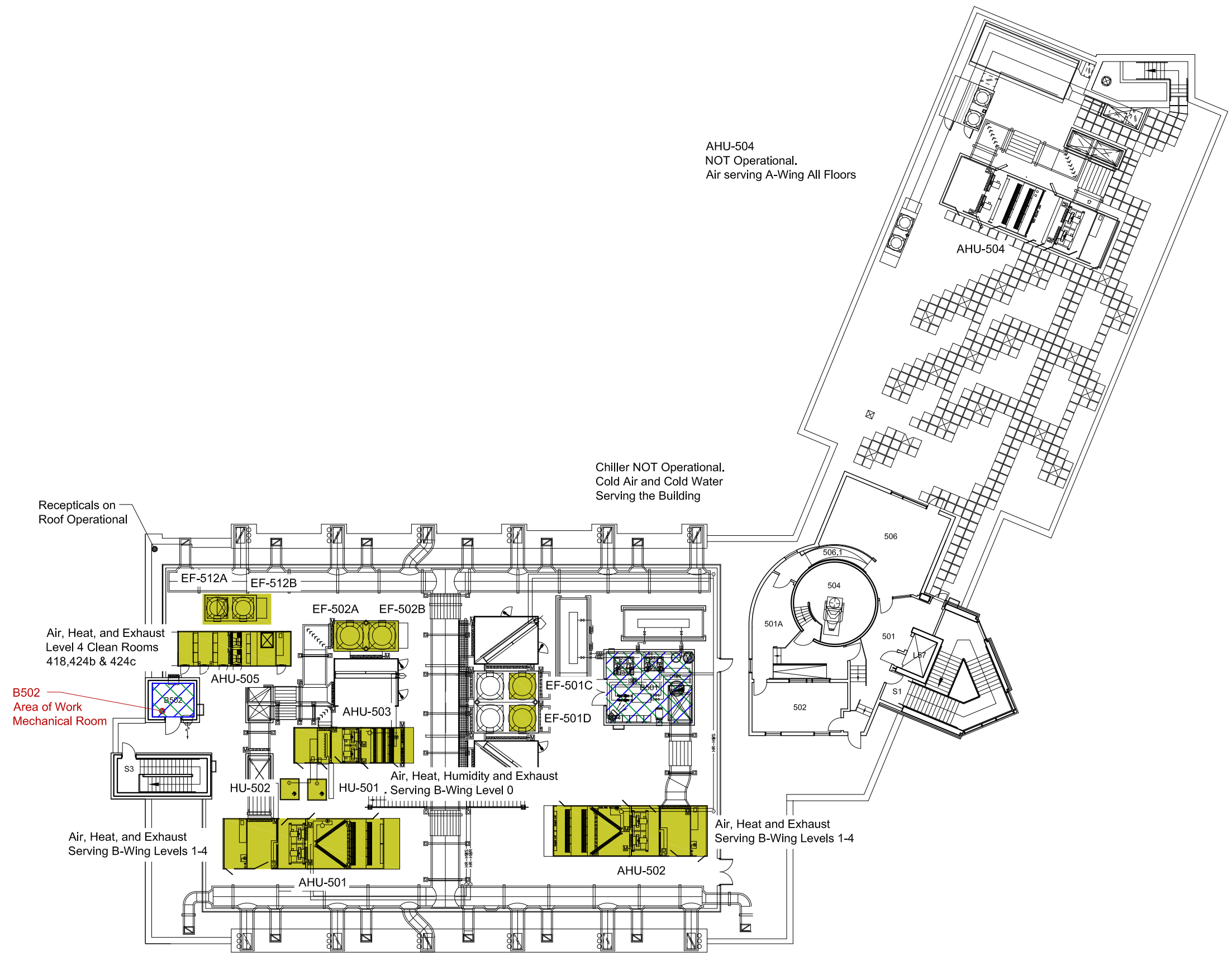
This drawing is for reference only. All site dimensions and conditions must be field-verified and reflected in all drawings submitted to UVic. The UVic title block is for FMGT use only. Modifications made to this document must be represented by the modifiers own title block. Any discrepancies found in UVic drawings must be communicated to UVic FMGT Project Manager assigned to the Project.

Title:
Bob Wright Centre
Vivair Air & Humidity Control
Eventual Power Shutdown
Level 4

Date: 24 July 2023
Scale: 1:300
Drawn By: JW
Project Number: 21-04940
Drawing No.: SK5

Notes:

-  Lighting
-  Receptacles
-  Operational



This drawing is for reference only. All site dimensions and conditions must be field-verified and reflected in all drawings submitted to UVic. The UVic title block is for FMGT use only. Modifications made to this document must be represented by the modifiers own title block. Any discrepancies found in UVic drawings must be communicated to UVic FMGT Project Manager assigned to the Project.

Title:
**Bob Wright Centre
 Vivair Air & Humidity Control
 Eventual Power Shutdown
 Level 5**

Date: **24 July 2023**
 Scale: **1:300**
 Drawn By: **JW**
 Project Number: **21-04940**
 Drawing No. **SK6**